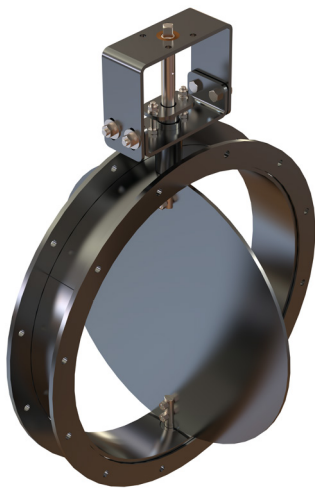




CSK | BUTTERFLY DAMPER VALVE



APPLICATION:
For On/Off service

RANGE:
DN 250 – 2000

CONNECTION:
Flanged, butt-weld
Flange drilling in accordance with:
EN1092-1, DIN24154 or custom build

INSPECTION & TESTING:
FCI 70-2 Class I & II (0.5% - KV90)
EN12266

TEMPERATURE RANGE:
-40 / + 400°C

MATERIAL:
Carbon Steel, AISI304, AISI316, AISI321, ...

DESIGN RULES:
EN12516-1, EN12516-2, EN1090

FACE 2 FACE:
Manufacturer standard or according customer specification

OPERATED:
Handlever, gearbox, pneumatic actuator, electrical actuator

DO YOUR NEEDS GO BEYOND A STANDARD PRODUCT?

V.V.C. actively helps you customize your existing products or develops together with you and its engineers, products that are tailored to your application.

Please contact us: info@vvc-valves.com or +32 (0)3 491 97 70

- 1.
air control
- 2.
air on/off
- 3.
exhaust on/off
- 4.
exhaust control
- 5.
ash
- 6.
chimney
- 7.
solids
- 8.
transport