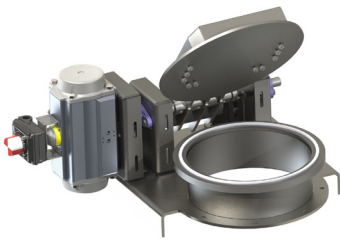


DSK-CV | CHIMNEY BUTTERFLY DAMPER VALVE



APPLICATION:

On/off service on chimneys

RANGE:

DN 250 – 4000

CONNECTION:

Flanged, butt-weld

Flange drilling in accordance with:

EN1092-1, DIN86044, DIN28031, JIS(7805-5K-10K), ASME B 16.5 Cl. 150 or 300, ASME 16.47 Serie A, B or custom build

INSPECTION & TESTING:

FCI 70-2 Class I, II & III available (0.1%- KV90)

EN12266

TEMPERATURE RANGE:

-40 / + 750°C

MATERIAL:

Carbon Steel, AISI304, AISI316, AISI253MA, AISI321, AISI309, Alloy 800HT / 625, ...

DESIGN RULES:

EN12516-1, EN12516-2, ANSI 16.34, EN1090

FACE 2 FACE:

Manufacturer standard or according customer specification

OPERATED:

Handlever, gearbox, pneumatic actuator, electrical actuator

DO YOUR NEEDS GO BEYOND A STANDARD PRODUCT?

V.V.C. actively helps you customize your existing products or develops together with you and its engineers, products that are tailored to your application.

Please contact us: info@vvc-valves.com or +32 (0)3 491 97 70

- 1. air control
- 2. air on/off
- 3. exhaust on/off
- 4. exhaust control
- 5. ash
- 6. chimney**
- 7. solids
- 8. transport