

DSK-G | GUILLOTINE DAMPER

APPLICATION:

For On/Off

RANGE:

DN 150 – 3000

CONNECTION:

Flanged, Butt weld

Flange drilling in accordance with:

EN1092-1, DIN86044, DIN28031, JIS (7805-5K-10K), ASME B 16.5 Cl. 150 or 300, ASME 16.47 Serie A, B or custom build

INSPECTION & TESTING:

FCI 70-2 Class I, II & III available (0.1% - KV90)

Option: 100% tight - with inflatable seal (ISV) – 160°C and +0.9 / -0.9 barG or 100% sealing by means of sealing air (fan)

EN12266

TEMPERATURE RANGE:

-40 / + 750°C

MATERIAL:

Carbon Steel, AISI304, AISI316, AISI253MA, AISI321, AISI309, Alloy 800HT / 625, ...

DESIGN RULES:

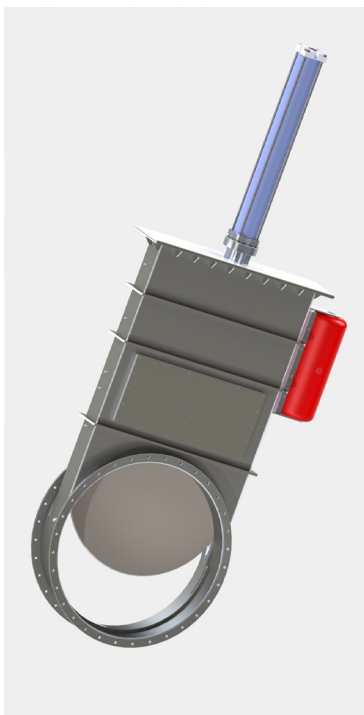
EN12516-1, EN12516-2 / PED 2014/68/EU / ANSI 16.34 / EN1090

FACE 2 FACE:

Manufacturer standard or according customer specification

OPERATED:

Handlever, gearbox, pneumatic actuator, electrical actuator



DO YOUR NEEDS GO BEYOND A STANDARD PRODUCT?

V.V.C. actively helps you customize your existing products or develops together with you and its engineers, products that are tailored to your application.

Please contact us: info@vvc-valves.com or +32 (0)3 491 97 70

1. air control

2. air on/off

3. exhaust on/off

4. exhaust control

5. ash

6. chimney

7. solids

8. transport