

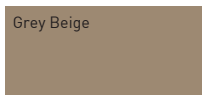
MODEL



FRAME COLOR

Ral 1019

Grey Beige



FABRIC COLORS

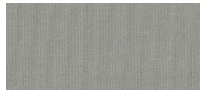
Natural



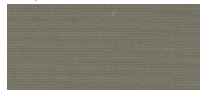
Canvas



Grey



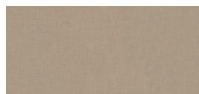
Taupe



Marble



Sand



Flanelle



Black



Acqua



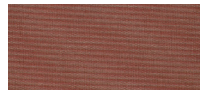
Apio



Nectar



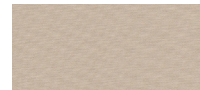
Terra



Lin

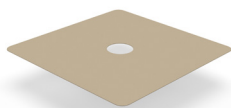


Avena

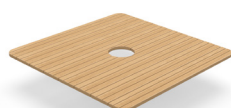


BASES

TOP PLATE

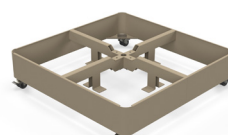


RAL 1019 - Grey Beige



Thermo poplar*

BASE FRAME



RAL 1019 - Grey Beige

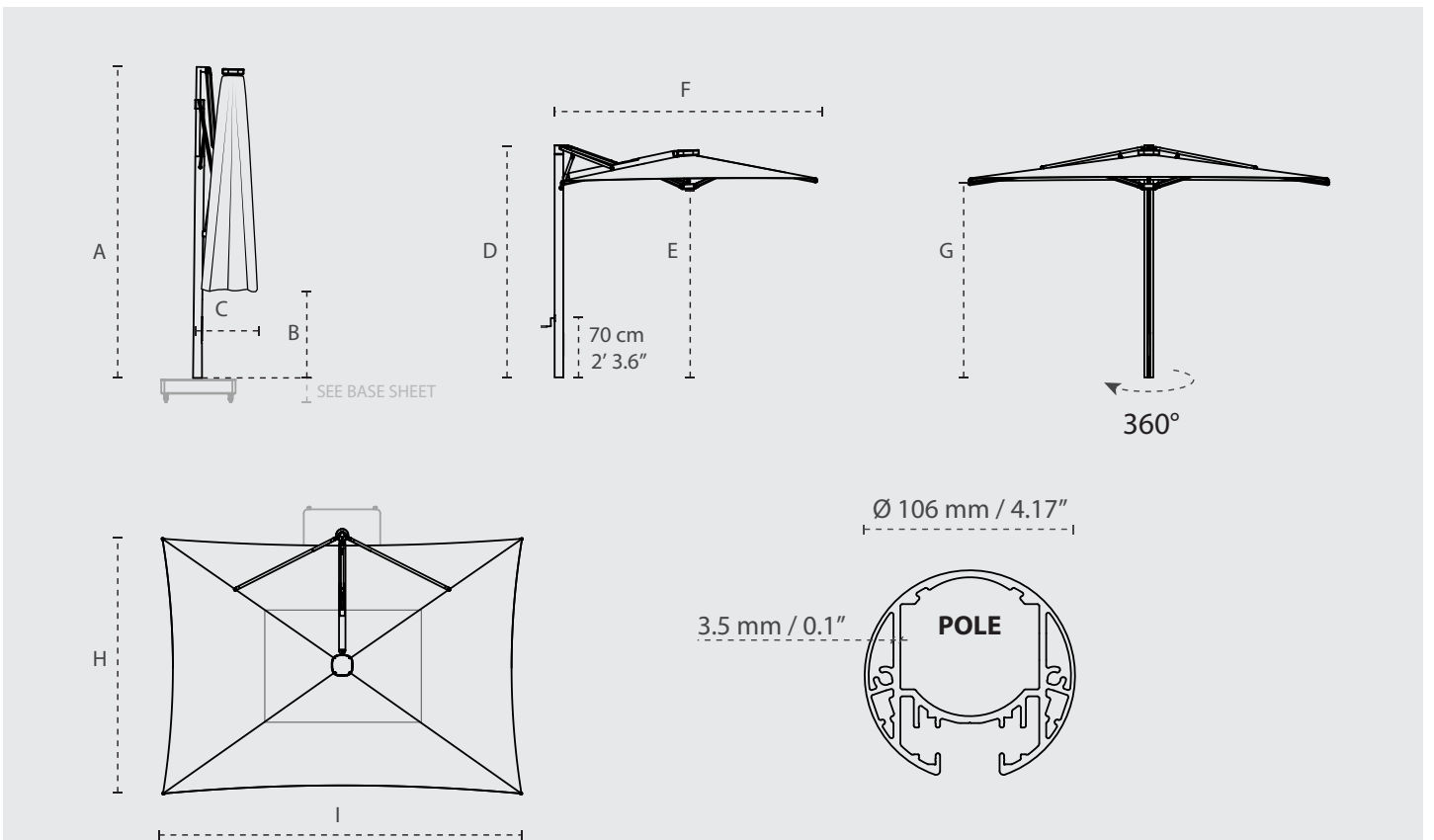


Galvanised steel

POSITIONS



DIMENSIONS



+/- 2% -----	A	B	C	D	E	F	G	H	I
	cm/ft	cm/ft	cm/ft	cm/ft	cm/ft	cm/ft	cm/ft	cm/ft	cm/ft
3 x 3 m / 10' x 10'	335/10' 11.9"	120/3' 11.2"	65/2' 1.6"	276/9' 0.7"	220/7' 2.6"	312/10' 2.8"	236/7' 8.9"	300/10'	300/10'
3 x 4.25 m / 10' x 14'	335/10' 11.9"	73/2' 4.7"	68/2' 2.8"	276/9' 0.7"	220/7' 2.6"	312/10' 2.8"	228/7' 5.8"	300/10'	425/ 14'
4 x 4 m / 13' 2" x 13' 2"	350/ 11' 5.8"	65/ 2' 1.6"	68/ 2' 2.8"	276/9' 0.7"	197/ 6' 5.6"	412/ 13' 6.2"	222/ 7' 3.4"	400/ 13' 2"	400/ 13' 2"

DIMENSIONS BASE



Wheelset standard included for Tile base and Flat base

Large tile base:

Recommended weight for concrete tiles* : 177 kg or 389.4 lbs

You need 12 concrete tiles for the Large PX Tile Base – see manual.

Extra large tile base:

Recommended weight for concrete tiles* : 118 kg or 260 lbs

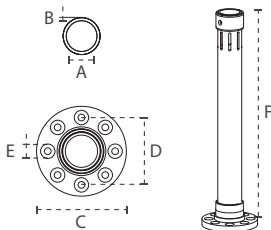
You need 8 concrete tiles for the Large PX Tile Base – see manual.

For extra large tile base 8 steel tiles (136 kg or 300 lbs) are standard included

* Recommended stone tiles Europe – 40x40x4,5 cm // USA – 16"x16"x1.75"

Base dimensions	L x W x H cm	L x W x H Inch	weight kg/lbs
PX Tile Base + Powder coated top plate	L : 89x89x22 XL : 89x89x26	L : 35" x 35" x 8.7" XL : 35" x 35" x 10.2"	L : 32/70 .5 XL : 168/370
PX Tile Base + Wooden top plate	L : 89x89x24 XL : 89x89x28	L : 35" x 35" x 9.5" XL : 35" x 35" x 11"	L : 32/70 .5 XL : 168/370
Flat base + Powder coated top plate	L : 89x89x10 XL : 89x89x16	L : 35" x 35" x 3.9" XL : 35" x 35" x 6.3"	L : 180/397 XL : 270/595
Flat base + Wooden top plate	L : 89x89x12 XL : 89x89x18	L : 35" x 35" x 4.7" XL : 35" x 35" x 7.1"	L : 180/397 XL : 270/595

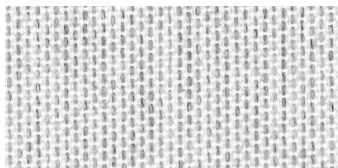
ROUND SUPPORT



Round support with integrated rotation system.

For non-permanent base options – see spec sheet Installation Options

MATERIALS

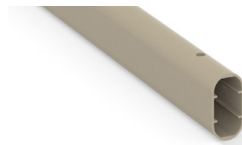


FABRIC

Colorum – 100% Acryl 260 gr/m²

More details – see spec sheet

Fabrics



RIBS

Aluminium powder coated RAL

1019



POLE

Aluminum powder coated RAL

1019 Grey Beige



OTHER MATERIALS

Crank handle: Brush polished

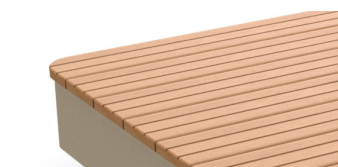
stainless steel



BASE FRAME

Galvanised steel, powder coated

RAL 1019 Grey Beige



BASE TOP PLATE

Galvanised steel, powder coated

RAL 1019 Grey Beige or

Wooden cover Thermo Poplar*

For projects – consult Umbrosa for powder coating finish options (RAL).

Contact us for the details on the MOQ.

*Our wooden covers are made of thermotreated poplar wood that has not been treated for color stability. The wood will weather with outdoor exposure and turn grey.

PACKAGING & TRANSPORT

Eclisum PX	L (cm)	W (cm)	H (cm)	Weight (kg)	L (ft)	W (ft)	H (ft)	Weight (lbs)
Umbrella Pole packaging	280	26	26	35	9'2.2"	10.2"	10.2"	77.2
Umbrella Halo packaging	307	63	31	20	10'0.9"	2'0.8"	1'0.2"	28.6
Large PX base frame packaging	90	90	15	32	2'11"	2'11"	5.9"	70.4
Extra large PX base frame + steel tiles on palette	120	92	40	180	3'11"	3'0.2"	1'3.5"	397
Large Flat base underframe palette	120	92	30	120	3'11"	3'0.2"	11.8"	265
Extra large Flat base underframe palette	120	92	34	280	3'11"	3'0.2"	11.8"	617
Powder coated top plate packaging	90	90	10	6.5	2'95"	2'95"	3.9"	14.3
Wooden top plate packaging	90	90	10	6.5	2'95"	2'95"	3.9"	14.3

NICE TO KNOW

- Spare parts available
- Designed and manufactured in Belgium
- Warranty between 10 and 2 years, please consult our warranty policy at www.umbrosa.com
- Download owner's manual (QR-code included), also available at www.umbrosa.com
- Storage bag included (Color : same as canopy or Flanelle)
- Wind speeds up to 6 beaufort, 50 km/h, 31 mph when base is permanently fixed
- Tested at TU Delft

SAFETY STATEMENTS & WARNINGS

- Product is suitable for light wind and/or light rain only.
- Position product in direction of wind as recommended in user manual.
- Do not use product in inclement weather, such as strong wind, thunderstorms, heavy rain or snow, and make sure that the umbrella is closed and stored in advance.
- Never allow the umbrella to flap in the wind. This could cause personal injury, damage to personal property, damage to umbrella and/or umbrella canopy.
- Close product and secure strap when not in use.
- Do not use product without its base or unless attached to building structure, and keep umbrella secured to umbrella base or mount at all times.
- Do not use product over or near harsh chemicals or open flames.
- Place product on stable and level surface.
- Do not allow children to assemble or operate product.
- Do not leave product unattended.
- Store product indoors during winter and extreme weather conditions.
- When adjusting or assembling the umbrella or umbrella base, make sure fingers, toes or any other parts of the body are clear from moving parts. Failing to do so may result in serious injury.
- Only use Umbrosa replacement parts.
- Read owner's manual.
- Any modifications to the product or failure to follow recommended care will void the warranty.
- Wind damage is not covered under our limited warranty.

The content of this document, in particular the mentioned models, is protected by copyrights and/or design rights. The present document and its content is communicated to you for information purposes only. Any partial or total reproduction or any other use without our prior written permission is strictly prohibited. This technical sheet remains subject to possible changes. Of course we do our best to eliminate all mistakes, but Umbrosa is not responsible for the errors in the documentation of products. All measurements are approximate and are provided for informational purposes only.