

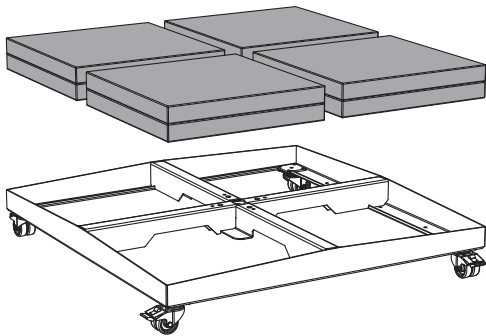
MEDIUM / LARGE BASE TILE DIMENSIONS

	MINIMUM	MAXIMUM
LxB	38 x 38 cm	40 x 40 cm
	15" x 15"	16" x 16"
THICKNESS	3.8 cm	4 cm
	1.5"	1.75"

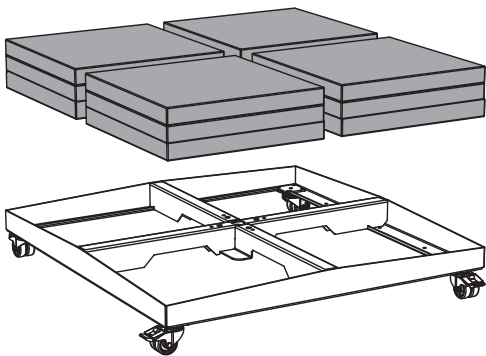
THICKNESS |



MEDIUM BASE: 8 TILES



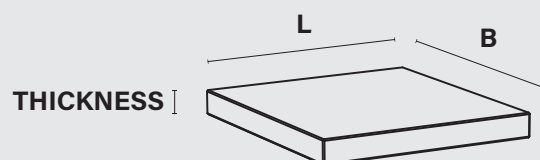
LARGE BASE: 12 TILES



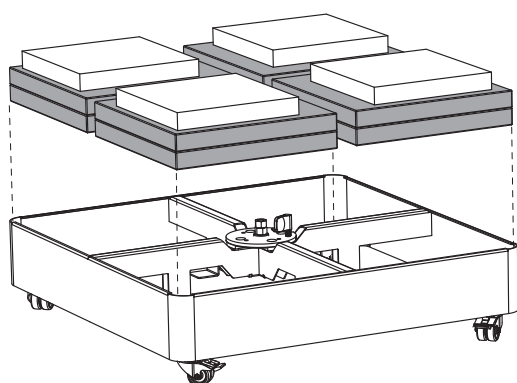
WHICH TILES FIT THE UMBROSA BASES?

UX BASE TILE DIMENSIONS

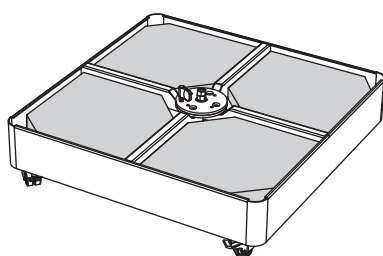
	MINIMUM	MAXIMUM
LxB	38 x 38 cm	40 x 40 cm
	15" x 15"	16" x 16"
THICKNESS	3.8 cm	4 cm
	1.5"	1.75"



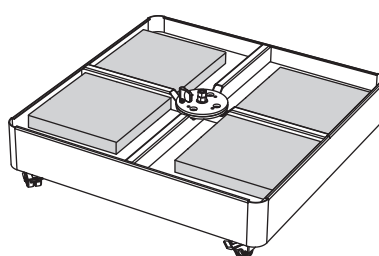
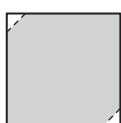
UX BASE: 8 TILES + TOP LAYER*



*3 TOP LAYER TILE OPTIONS



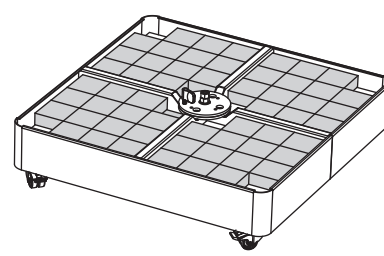
CONCRETE TILE WITH
2X CORNER CUT



SMALL CONCRETE TILE

example:

30x30 cm / 12"x12"
max. thickness = 4 cm / 1.75"



SMALLER CONCRETE TILES

example:

10x10 cm / 0.4"x0.4"
max. thickness = 4 cm / 1.75"

The content of this document, in particular the mentioned models, is protected by copyrights and/or design rights. The present document and its content is communicated to you for information purposes only. Any partial or total reproduction or any other use without our prior written permission is strictly prohibited. This technical sheet remains subject to possible changes. Of course we do our best to eliminate all mistakes, but Umbrosa is not responsible for the errors in the documentation of products. All measurements are approximate and are provided for informational purposes only.

MODELS

FULL BLACK



Black

RAL 9005
Black

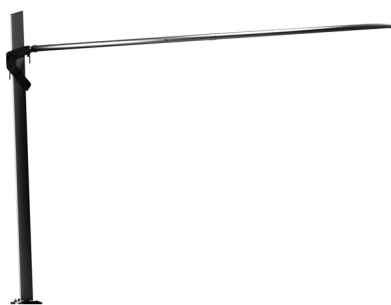
ARCHITECTURE



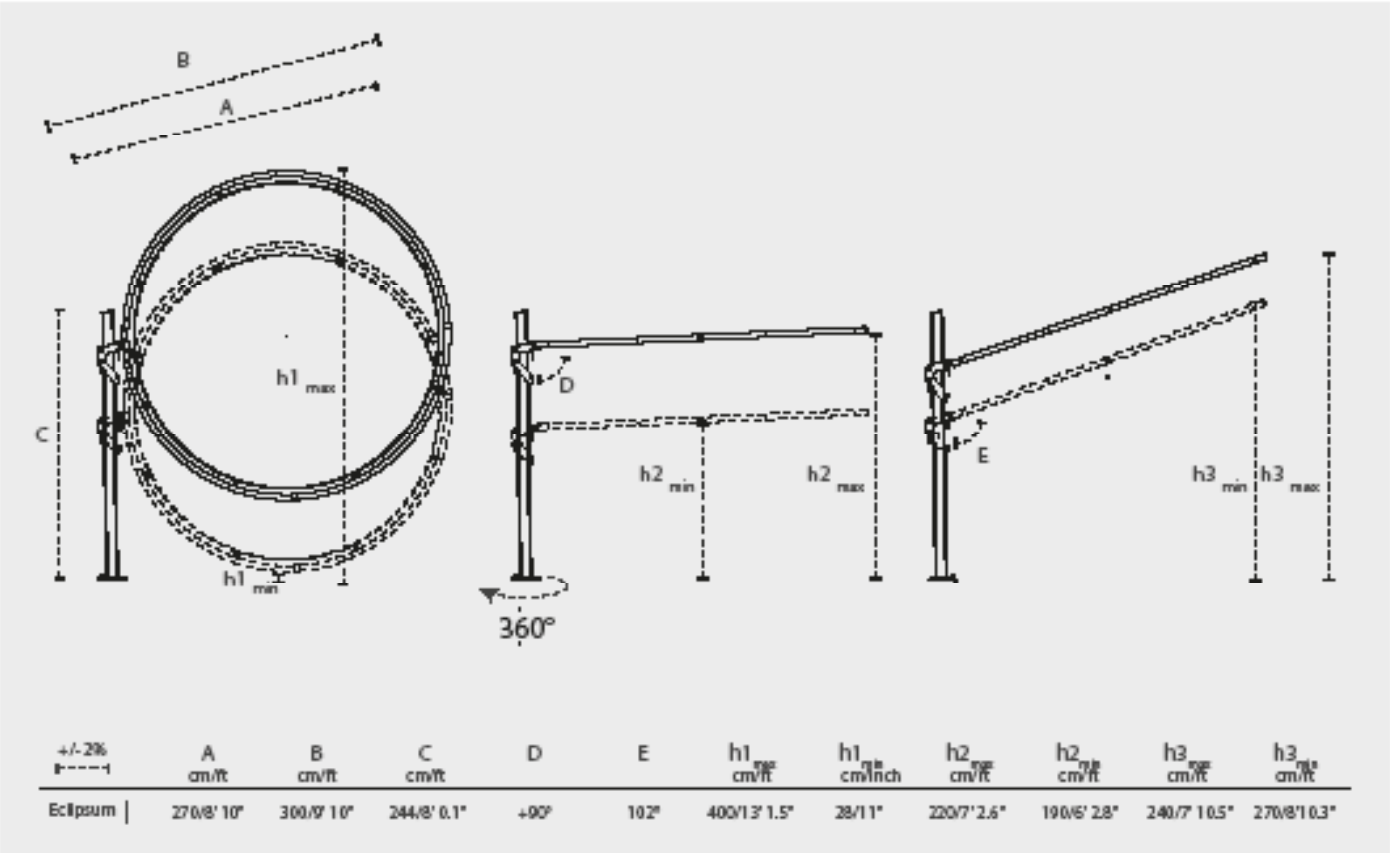
Marble

RAL 9018
Papyrus White

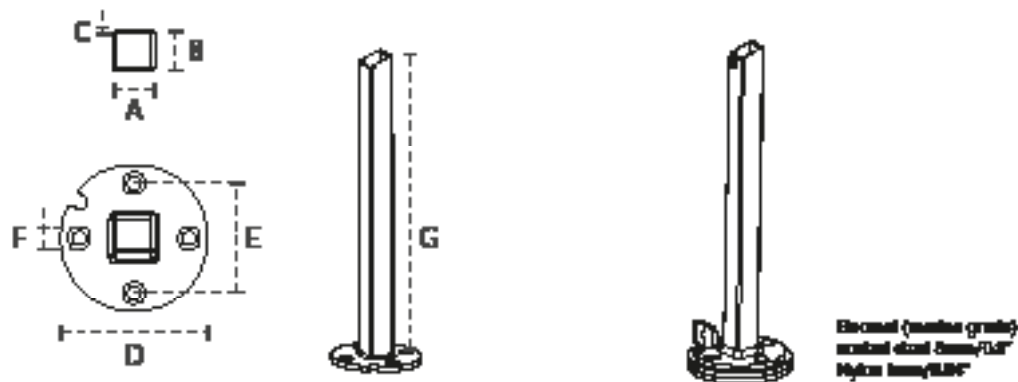
POSITIONS



DIMENSIONS

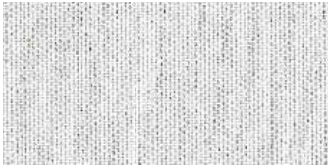


ROUND SUPPORT



For non-permanent base options – see spec sheet Installation Options

MATERIALS



FABRIC

Colorum – 100% Acryl 260 gr/m²

More details – see spec sheet Fabrics



RIBS

Glass fiber Ø 6mm/0.23"



POLE

Aluminum powder

coated RAL 9005

Black or RAL 9018

Papyrus White



OTHER MATERIALS

Handle: stainless steel plate 136 (6mm/0.23")

powder coated RAL 9005 TEC

Hooks: powder coated RAL 9005 TEC

Ring fixation: powder coated RAL 9005 TEC

For projects – consult Umbrosa for powder coating finish options (RAL).

Contact us for the details on the MOQ.

PACKAGING & TRANSPORT

Eclisum UX	L (cm)	W (cm)	H (cm)	Weight (kg)	L (")	W (")	H (")	Weight (lbs)
Umbrella box	247	53	39	50	8'1.2"	1'8.9"	1'3.4"	121
Base L UX	88.8	88.8	15	32 kg	2'11"	2'11"	5.9"	70.4
Base L UX package	99	95	20	33 kg	3'1.4"	3'1.4"	7.8"	72.6

NICE TO KNOW

- Spare parts available
- Designed and manufactured in Belgium
- Warranty between 10 and 2 years, please consult our warranty policy at www.umbrosa.com
- Download owner's manual (QR-code included), also available at www.umbrosa.com
- Storage bag included (PU coated fabric)
- Wind speeds up to 5 beaufort, 30 km/h, 18 mph when base is permanently fixed
- Tested at TU Delft

SAFETY STATEMENTS & WARNINGS

- Product is suitable for light wind and/or light rain only.
- Position product in direction of wind as recommended in user manual.
- Do not use product in inclement weather, such as strong wind, thunderstorms, heavy rain or snow, and make sure that the umbrella is closed and stored in advance.
- Never allow the umbrella to flap in the wind. This could cause personal injury, damage to personal property, damage to umbrella and/or umbrella canopy.
- Close product and secure strap when not in use.
- Do not use product without its base or unless attached to building structure, and keep umbrella secured to umbrella base or mount at all times.
- Do not use product over or near harsh chemicals or open flames.
- Place product on stable and level surface.
- Do not allow children to assemble or operate product.
- Do not leave product unattended.
- Store product indoors during winter and extreme weather conditions.
- When adjusting or assembling the umbrella or umbrella base, make sure fingers, toes or any other parts of the body are clear from moving parts. Failing to do so may result in serious injury.
- Only use Umbrosa replacement parts.
- Read owner's manual.
- Any modifications to the product or failure to follow recommended care will void the warranty.
- Wind damage is not covered under our limited warranty.

CHARACTERISTICS	VALUES		UNITS	STANDARDS
	WARP	WEFT		

OVERALL CHARACTERISTICS

Composition	100% solution dyed acrylic			
Finish	Stain-resistant treatment: Exclusive Glen Raven formulation. Does not contain PFOS (perfluorooctanyl sulphonate)			
Weave	Weave			ISO 7211-1
Weight	260		g/m ²	ISO 3801
	6.17		lb/ft	
Width	137		cm	EN 1773
	53.94"		inch	

FABRIC STRENGTH

Tensile strength	160	80	daN	ISO 13934-1
Tear strength	7	3.7	daN	ISO 13937-1

COLOR RESISTANCE

Color fastness UV	7/8	class/8	ISO 105 B02
Color fastness weather condition	7/8	class/8	ISO 105 B04

USE

Roll length	50	1m
	164	1f
Recommended use	parasols, cushions, upholstery	
Guarantee	3	Years
Temperature of use	-20 >> +70	°C
	-4 >> +158	°F

COLORS

COLORUM

Marble

Curacao

Mint

Blush

Pepper

Almond

Sand

Flanelle

Black

*By Dickson (Sunbrella) and Tuvatextil (Agora)

Monitor/printer colors may vary. Please refer to actual fabric before making your final decision.

The content of this document, in particular the mentioned models, is protected by copyrights and/or design rights. The present document and its content is communicated to you for information purposes only. Any partial or total reproduction or any other use without our prior written permission is strictly prohibited. This technical sheet remains subject to possible changes. Of course we do our best to eliminate all mistakes, but Umbrosa is not responsible for the errors in the documentation of products. All measurements are approximate and are provided for informational purposes only.

CHARACTERISTICS	VALUES		UNITS	STANDARDS
	WARP	WEFT		

OVERALL CHARACTERISTICS

Composition	100% solution dyed acrylic			
Finish	Stain-resistant treatment: Exclusive Glen Raven formulation. Does not contain PFOS (perfluorooctanyl sulphonate)			
Weave	Weave			ISO 7211-1
Weight	255		g/m ²	ISO 3801
	6.05		lb/ft	
Width	137		cm	EN 1773
	53.94		inch	

FABRIC STRENGTH

Tensile strength	160	80	daN	ISO 13934-1
Tear strength	7	3.7	daN	ISO 13937-1

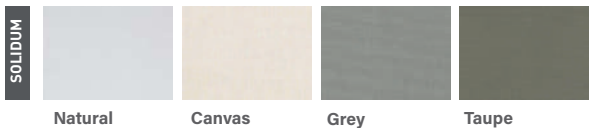
COLOR RESISTANCE

Color fastness UV	7/8	class/8	ISO 105 B02
Color fastness weather condition	7/8	class/8	ISO 105 B04

USE

Roll length	50	1m
	164	1f
Recommended use	parasols, cushions, upholstery	
Guarantee	3	Years
Temperature of use	-20 >> +70	°C
	-4 >> +158	°F

COLORS



Monitor/printer colors may vary. Please refer to actual fabric before making your final decision.



The content of this document, in particular the mentioned models, is protected by copyrights and/or design rights. The present document and its content is communicated to you for information purposes only. Any partial or total reproduction or any other use without our prior written permission is strictly prohibited. This technical sheet remains subject to possible changes. Of course we do our best to eliminate all mistakes, but Umbrosa is not responsible for the errors in the documentation of products. All measurements are approximate and are provided for informational purposes only.

MODEL



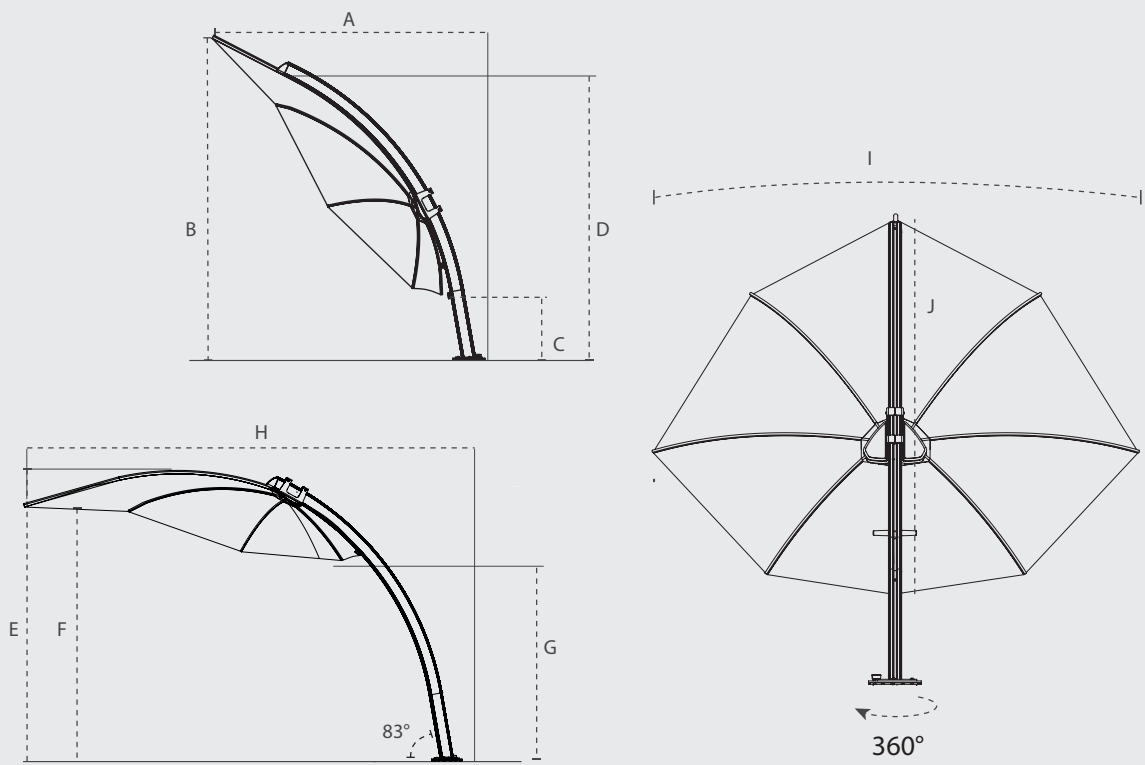
POSITIONS



COLORS

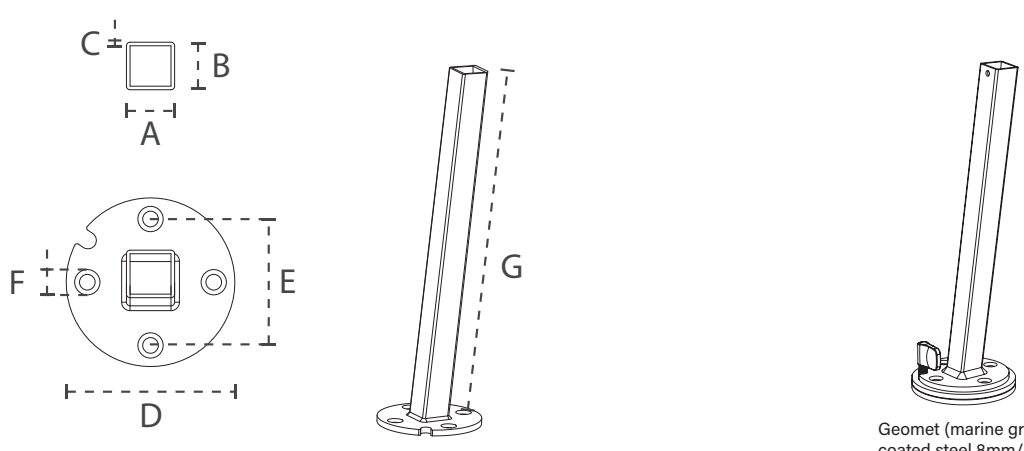
	Marble	Curacao	Mint	Blush	Pepper	Almond	Sand	Flanelle	Black
COLORUM									
SOLIDUM					<p>All colors of the fabric range furniture grade Solids' (no stripes or patterns) are available on special request with a minimum order quantity of 10 pcs. Contact Umbrosa for more information.</p>				
	Natural	Canvas	Grey	Taupe					

DIMENSIONS



	A	B	C	D	E	F	G	H	I	J
	cm/ft	cm/ft	cm/ft	cm/ft	cm/ft	cm/ft	cm/ft	cm/ft	cm/ft	cm/ft
Icarus	255/8' 4.4"	260/8' 6.4"	44/1' 5.3"	240/7' 10.5"	260/8' 6.4"	250/8' 2.4"	150/4' 11"	380/4' 5.6"	300/9' 10"	300/9' 10"

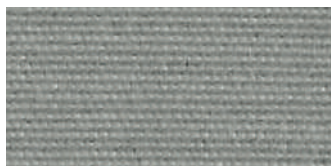
ROUND SUPPORT



Geomet (marine grade)
coated steel 8mm/0.3"
Nylon 1mm/0.04"

	mm/inch	mm/inch	mm/inch	mm/inch	mm/inch	mm/inch	mm/inch
Round support	40/1.57"	40/1.57"	3/0.12"	140/5.5"	105/4.1"	11/0.43"	490/17.3"

MATERIALS



FABRIC

Solidum – 100% Acryl 255 gr/m²

Colorum – 100% Acryl 260 gr/m²

More details – see spec sheet Fabrics



RIBS

Glass fiber Ø 12mm/0.46"



POLE

Powder coated
aluminum



OTHER MATERIALS

Wheels: nylon – self lubricating.

Handle: stainless steel

For projects – consult Umbrosa for powder coating finish options (RAL).

Contact us for the details on the MOQ.

PACKAGING & TRANSPORT

Icarus	L (cm)	W (cm)	H (cm)	Weight (kg)	L (")	W (")	H (")	Weight (lbs)
Umbrella box	307	63	31	35	10'0.9"	2' 0.8"	1' 0.2"	77
Base L STD	88.6	88.6	15	17.5 kg	2"10.9"	2"10.9"	5.9"	38.5
Base L STD package	95	95	20	18.5 kg	3'1.4"	3'1.4"	7.8"	40.7

NICE TO KNOW

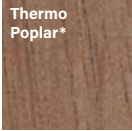
- Spare parts available
- Designed and manufactured in Belgium
- Warranty between 10 and 2 years, please consult our warranty policy at www.umbrosa.com
- Download owner's manual (QR-code included), also available at www.umbrosa.com
- Storage bag included (PU coated fabric)
- Wind speeds up to 5 beaufort, 30 km/h, 18 mph when base is permanently fixed
- Tested at TU Delft

SAFETY STATEMENTS & WARNINGS

- Product is suitable for light wind and/or light rain only.
- Position product in direction of wind as recommended in user manual.
- Do not use product in inclement weather, such as strong wind, thunderstorms, heavy rain or snow, and make sure that the umbrella is closed and stored in advance.
- Never allow the umbrella to flap in the wind. This could cause personal injury, damage to personal property, damage to umbrella and/or umbrella canopy.
- Close product and secure strap when not in use.
- Do not use product without its base or unless attached to building structure, and keep umbrella secured to umbrella base or mount at all times.
- Do not use product over or near harsh chemicals or open flames.
- Place product on stable and level surface.
- Do not allow children to assemble or operate product.
- Do not leave product unattended.
- Store product indoors during winter and extreme weather conditions.
- When adjusting or assembling the umbrella or umbrella base, make sure fingers, toes or any other parts of the body are clear from moving parts. Failing to do so may result in serious injury.
- Only use Umbrosa replacement parts.
- Read owner's manual.
- Any modifications to the product or failure to follow recommended care will void the warranty.
- Wind damage is not covered under our limited warranty.

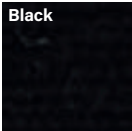
MODEL

ICARUS UX SAND

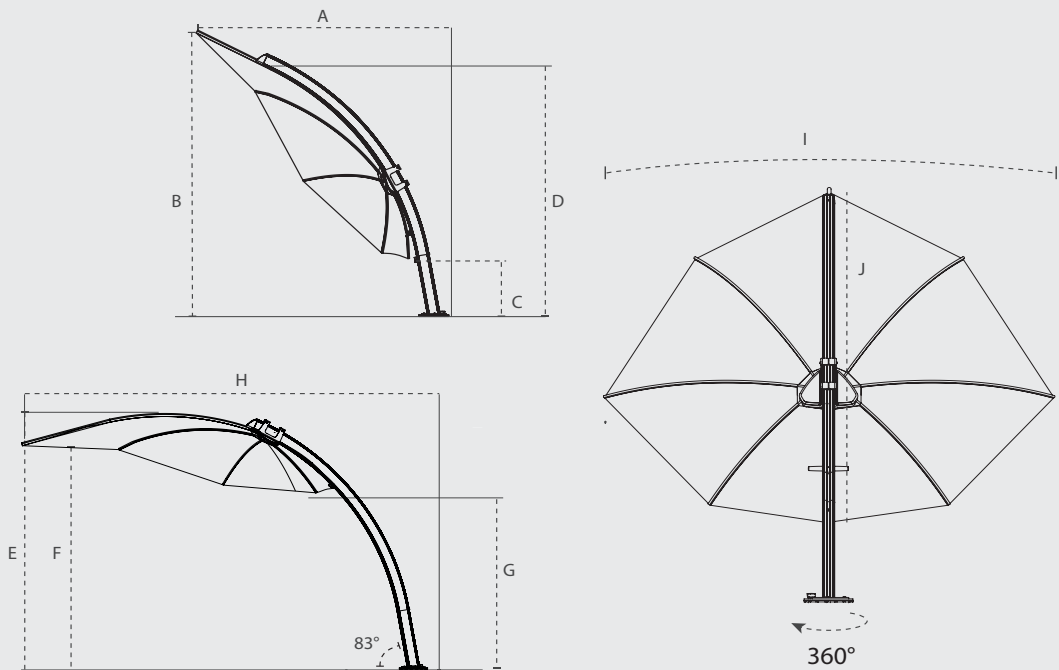


*Our UX wooden covers are made of thermotreated poplar wood that has not been treated for color stability. The wood will weather with outdoor exposure and turn grey.

ICARUS UX FULL BLACK

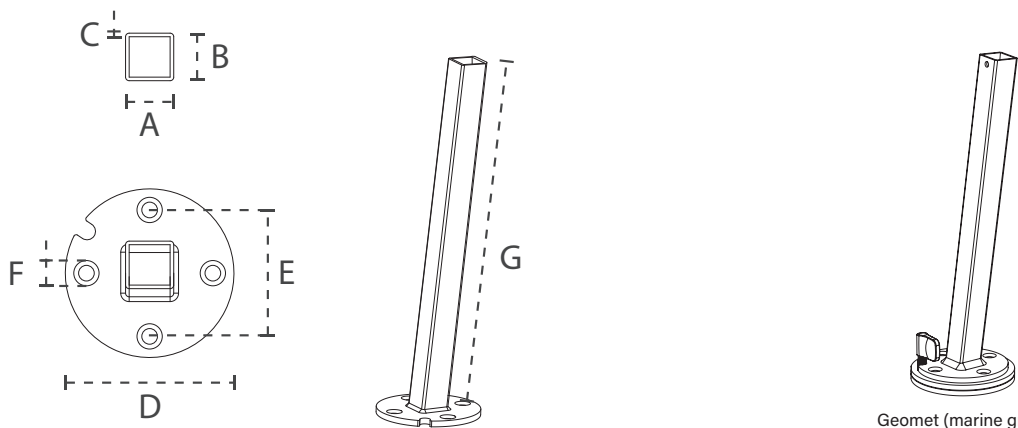


DIMENSIONS



<small>+/- 2% t-----t</small>	A	B	C	D	E	F	G	H	I	J
	cm/ft	cm/ft	cm/ft	cm/ft	cm/ft	cm/ft	cm/ft	cm/ft	cm/ft	cm/ft
Icarus	255/8' 4.4"	260/8' 6.4"	44/1' 5.3"	240/7' 10.5"	260/8' 6.4"	250/8' 2.4"	150/4' 11"	380/4' 5.6"	300/9' 10"	300/9' 10"

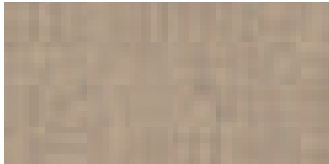
ROUND SUPPORT



Geomet (marine grade)
coated steel 8mm/0.3"
Nylon 1mm/0.04"

	mm/inch	mm/inch	mm/inch	mm/inch	mm/inch	mm/inch	mm/inch
Round support	40/1,57"	40/1,57"	3/0.12"	140/5.5"	105/4.1"	11/0.43"	490/1'7.3"

MATERIALS



FABRIC

Colorem – 100% Acryl 260 gr/m²

More details – see spec sheet Fabrics



RIBS

Glass fiber Ø 12mm/0.46"



POLE

Aluminum powder

coated RAL 1013

Limestone Beige or

RAL 9005 Black



OTHER MATERIALS

Sliding blocks: nylon - self lubricating

Handle: stainless steel and aluminum powder
coated RAL 1013 or RAL 9005 TEC

Wooden cover Thermo Poplar*

*Our UX wooden covers are made of thermotreated poplar wood that has not been treated for color stability. The wood will weather with outdoor exposure and turn grey.

For projects – consult Umbrosa for powder coating finish options (RAL).

Contact us for the details on the MOQ.

PACKAGING & TRANSPORT

ICARUS UX	L (cm)	W (cm)	H (cm)	Weight (kg)	L (ft)	W (inch)	H (inch)	Weight (lbs)
Umbrella box	307	63	31	35	10'0.9"	2'0.8"	1'0.2"	77
Base L UX Sand/Full Black	88.8	88.8	16.5	32 kg	2'11"	2'11"	6.5"	70.4
Base L UX Sand package/Full Black	95	95	20	33 kg	3'1.4"	3'1.4"	7.8"	72.6

NICE TO KNOW

- Spare parts available
- Designed and manufactured in Belgium
- Warranty between 10 and 2 years, please consult our warranty policy at www.umbrosa.com
- Download owner's manual (QR-code included), also available at www.umbrosa.com
- Storage bag included (Colorem Flanelle)
- Wind speeds up to 5 beaufort, 30 km/h, 18 mph when base is permanently fixed.
- Tested at TU Delft

The content of this document, in particular the mentioned models, is protected by copyrights and/or design rights. The present document and its content is communicated to you for information purposes only. Any partial or total reproduction or any other use without our prior written permission is strictly prohibited. This technical sheet remains subject to possible changes. Of course we do our best to eliminate all mistakes, but Umbrosa is not responsible for the errors in the documentation of products. All measurements are approximate and are provided for informational purposes only.

SAFETY STATEMENTS & WARNINGS

- Product is suitable for light wind and/or light rain only.
- Position product in direction of wind as recommended in user manual.
- Do not use product in inclement weather, such as strong wind, thunderstorms, heavy rain or snow, and make sure that the umbrella is closed and stored in advance.
- Never allow the umbrella to flap in the wind. This could cause personal injury, damage to personal property, damage to umbrella and/or umbrella canopy.
- Close product and secure strap when not in use.
- Do not use product without its base or unless attached to building structure, and keep umbrella secured to umbrella base or mount at all times.
- Do not use product over or near harsh chemicals or open flames.
- Place product on stable and level surface.
- Do not allow children to assemble or operate product.
- Do not leave product unattended.
- Store product indoors during winter and extreme weather conditions.
- When adjusting or assembling the umbrella or umbrella base, make sure fingers, toes or any other parts of the body are clear from moving parts. Failing to do so may result in serious injury.
- Only use Umbrosa replacement parts.
- Read owner's manual.
- Any modifications to the product or failure to follow recommended care will void the warranty.
- Wind damage is not covered under our limited warranty.

MODELS



Round



Square

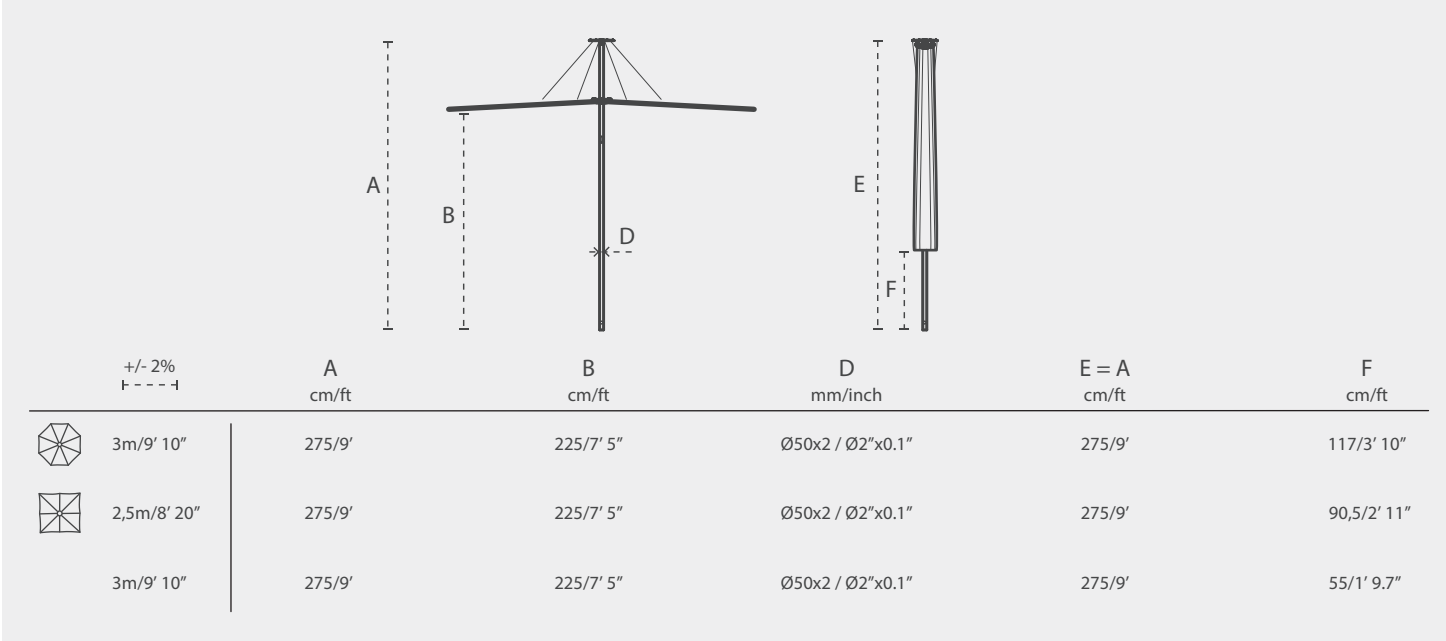
POSITIONS



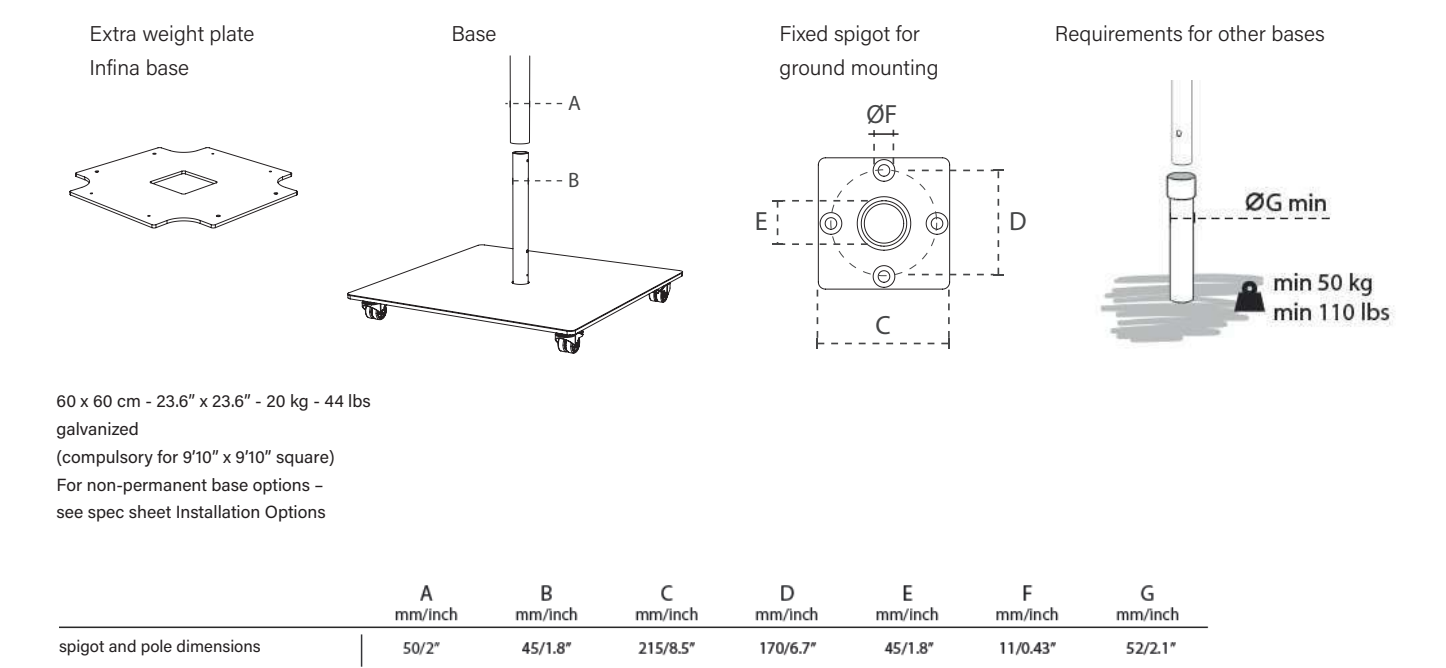
COLORS

	Marble	Curacao	Mint	Blush	Pepper	Almond	Sand	Flanelle	Black
COLORUM									
SOLIDUM					<p>All colors of the fabric range furniture grade Solids' (no stripes or patterns) are available on special request with a minimum order quantity of 10 pcs. Contact Umbrosa for more information.</p>				
	Natural	Canvas	Grey	Taupe					

DIMENSIONS



DIMENSIONS FOR BASE AND ROUND SUPPORT



MATERIALS



FABRIC

Solidum – 100% Acryl 250 gr/m²

Colorum – 100% Acryl 260 gr/m²

More details – see spec sheet Fabrics

Confection Scheme:



3m RO



3m SQ Colorum



RIBS

Naturally anodized aluminum



POLE

Naturally anodized aluminum or powder coated RAL 9005 (Black)*



OTHER MATERIALS

Cables : stainless steel Ø 2mm

Top plate : aluminum powder coated

RAL 7047 TEC (Grey) or RAL 9005 TEC (Black)*

Hub: marine grade stainless steel (316)

Rope: Ø 5mm

For projects – consult Umbrosa for powder coating finish options (RAL).

Contact us for the details on the MOQ.

*RAL 9005 not available in the US, except with MOQ.

PACKAGING & TRANSPORT

Infina	L (cm)	W (cm)	H (cm)	Weight (kg)	L (ft)	W (inch)	H (inch)	Weight (lbs)
Umbrella box	280	26	26	11	9'2.2"	10.2"	10.2"	24.2
Flatbase	73	73	1.2	50 kg	2'4.7"	2'4.7"	0.5"	110
Medium base	88.6	88.6	10	17 kg	2'10.9"	2'10.9"	3.9"	37.4
Flatbase package	84	80	7	51 kg	2'9.1"	2'7.5"	2.8"	112.2
Medium base package	90	90	11	18 kg	2'11.4"	2'11.4"	4.3"	39.6

NICE TO KNOW

- Spare parts available
- Designed and manufactured in Belgium
- Warranty between 10 and 2 years, please consult our warranty policy at www.umbrosa.com
- Download owner's manual (QR-code included), also available at www.umbrosa.com
- Storage bag included (PU coated fabric)
- Wind speeds up to 6 beaufort, 50 km/h, 31 mph when base is permanently fixed (for details, please check our wind spec sheet)
- Tested at TU Delft

SAFETY STATEMENTS & WARNINGS

- Product is suitable for light wind and/or light rain only.
- Position product in direction of wind as recommended in user manual.
- Do not use product in inclement weather, such as strong wind, thunderstorms, heavy rain or snow, and make sure that the umbrella is closed and stored in advance.
- Never allow the umbrella to flap in the wind. This could cause personal injury, damage to personal property, damage to umbrella and/or umbrella canopy.
- Close product and secure strap when not in use.
- Do not use product without its base or unless attached to building structure, and keep umbrella secured to umbrella base or mount at all times.
- Do not use product over or near harsh chemicals or open flames.
- Place product on stable and level surface.
- Do not allow children to assemble or operate product.
- Do not leave product unattended.
- Store product indoors during winter and extreme weather conditions.
- When adjusting or assembling the umbrella or umbrella base, make sure fingers, toes or any other parts of the body are clear from moving parts. Failing to do so may result in serious injury.
- Only use Umbrosa replacement parts.
- Read owner's manual.
- Any modifications to the product or failure to follow recommended care will void the warranty.
- Wind damage is not covered under our limited warranty.

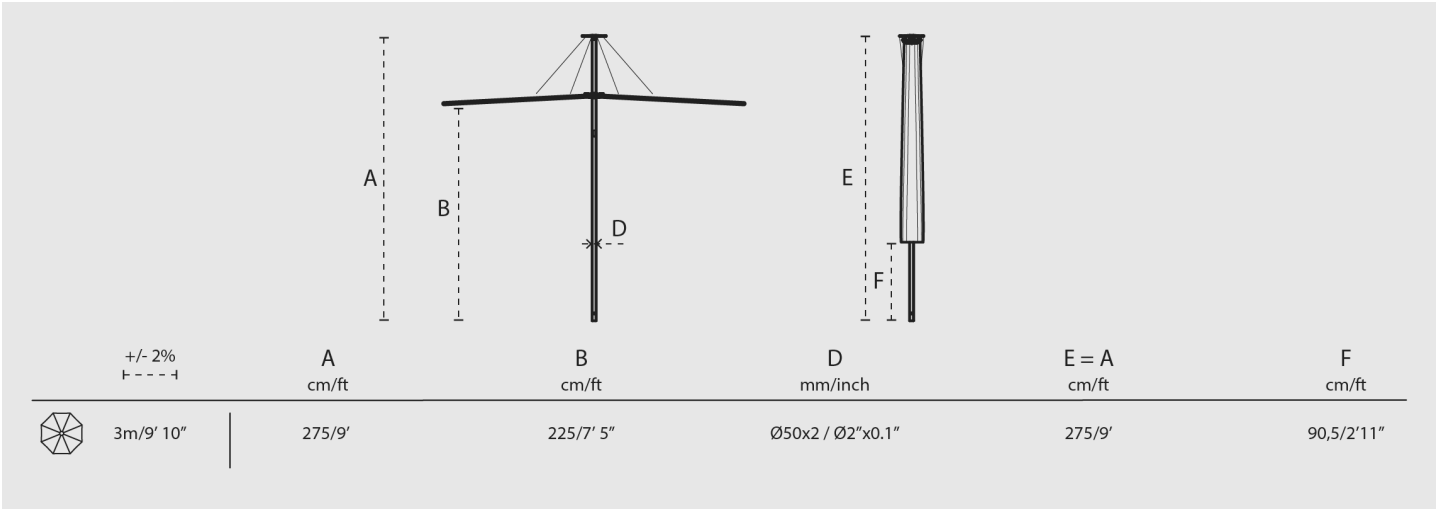
The content of this document, in particular the mentioned models, is protected by copyrights and/or design rights. The present document and its content is communicated to you for information purposes only. Any partial or total reproduction or any other use without our prior written permission is strictly prohibited. This technical sheet remains subject to possible changes. Of course we do our best to eliminate all mistakes, but Umbrosa is not responsible for the errors in the documentation of products. All measurements are approximate and are provided for informational purposes only.

MODEL

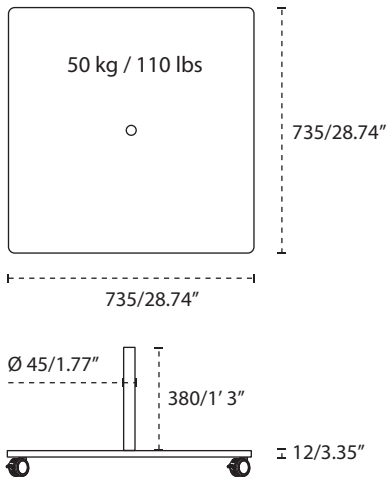
INFINA UX LATTE



DIMENSIONS



DIMENSIONS BASE (MM/INCH)



MATERIALS



FABRIC
Colorum – 100% Acryl 260 gr/m²
Solidum – 100% Acryl 250 gr/m²
More details – see spec sheet Fabrics



RIBS AND HUB
Aluminum ribs, powder coated
Stainless steel 316 hub, polished



POLE
Aluminum Ø50 mm / 1.97"
powder coated RAL 1019
Grey Beige



BASE LATTE
Galvanised steel, powder coated
Black with wooden cover Thermo Poplar.*

*Our UX wooden covers are made of thermotreated poplar wood that has not been treated for color stability. The wood will weather with outdoor exposure and turn grey.

PACKAGING & TRANSPORT

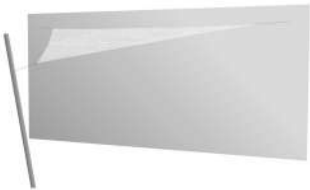
Infina UX	L (cm)	W (cm)	H (cm)	Weight (kg)	L (inch)	W (inch)	H (inch)	Weight (lbs)
Umbrella box	280	26	26	11	110.23"	10.2"	10.2"	24.2
Base Latte	73	73	1.2	50 kg	28.74"	28.74"	3.35"	110

NICE TO KNOW

- Spare parts available
 - Designed and manufactured in Belgium
 - Warranty between 10 and 2 years, please consult our warranty policy at www.umbrosa.com
 - Download owner's manual (QR-code included), also available at www.umbrosa.com
 - Storage bag included (PU coated fabric)
 - Wind speeds up to 6 beaufort, 50 km/h, 31 mph when base is permanently fixed (for details, please check our wind spec sheet)
 - Tested at TU Delft
- SAFETY STATEMENTS & WARNINGS**

 - Product is suitable for light wind and/or light rain only.
 - Position product in direction of wind as recommended in user manual.
 - Do not use product in inclement weather, such as strong wind, thunderstorms, heavy rain or snow, and make sure that the umbrella is closed and stored in advance.
 - Never allow the umbrella to flap in the wind. This could cause personal injury, damage to personal property, damage to umbrella and/or umbrella canopy.
 - Close product and secure strap when not in use.
 - Do not use product without its base or unless attached to building structure, and keep umbrella secured to umbrella base or mount at all times.
 - Do not use product over or near harsh chemicals or open flames.
 - Place product on stable and level surface.
 - Do not allow children to assemble or operate product.
 - Do not leave product unattended.
 - Store product indoors during winter and extreme weather conditions.
 - When adjusting or assembling the umbrella or umbrella base, make sure fingers, toes or any other parts of the body are clear from moving parts. Failing to do so may result in serious injury.
 - Only use Umbrosa replacement parts.
 - Read owner's manual.
 - Any modifications to the product or failure to follow recommended care will void the warranty.
 - Wind damage is not covered under our limited warranty.

MODELS



Triangle

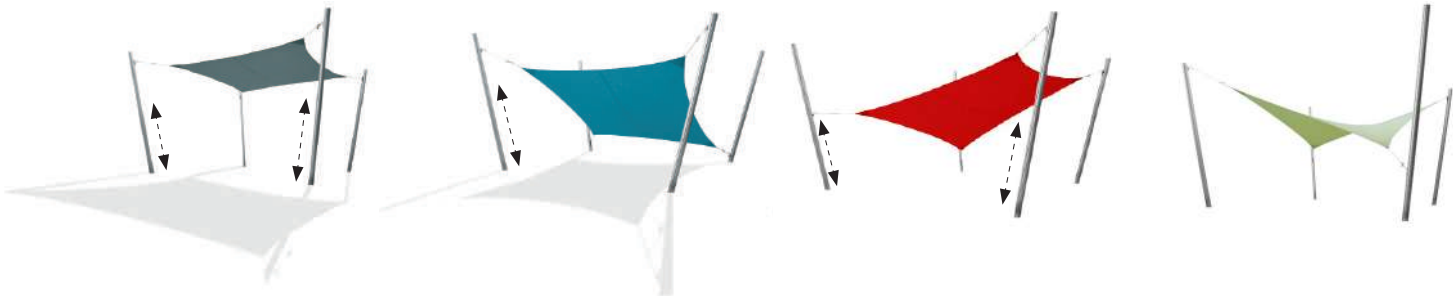


Square



Rectangle

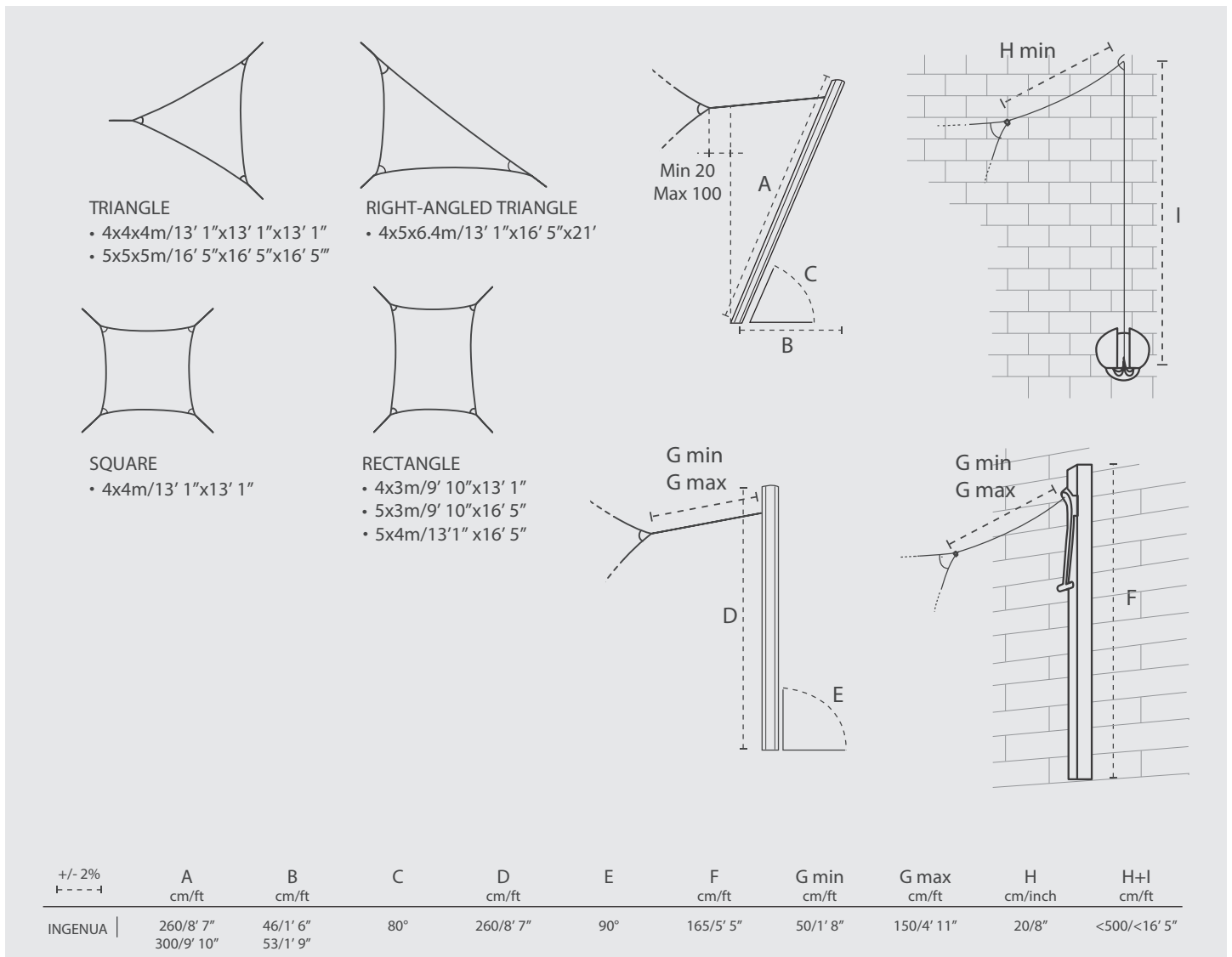
POSITIONS



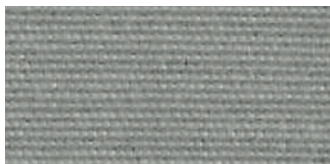
COLORS

	Marble	Curacao	Mint	Blush	Pepper	Almond	Sand	Flanelle	Black
COLORUM									
SOLIDUM					<p>All colors of the fabric range furniture grade Solids' (no stripes or patterns) are available on special request with a minimum order quantity of 10 pcs. Contact Umbrosa for more information.</p>				
	Natural	Canvas	Grey	Taupe					

DIMENSIONS

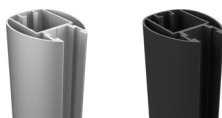


MATERIALS



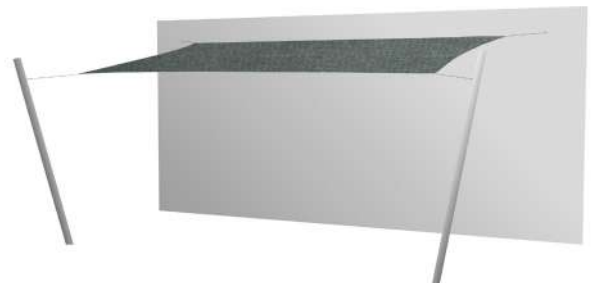
FABRIC

Solidum – 100% Acryl 250 gr/m²
 Colorum – 100% Acryl 260 gr/m²
 More details – see spec sheet Fabrics



POLE

Naturally anodized aluminum
 Black - RAL 9005 TEC



OTHER MATERIALS

Carabiner: stainless steel 316 (marine grade)
 Handle: stainless steel 316 (casted & polished)
 Rope: Ø 6mm/0,24"

For projects – consult Umbrosa for powder coating finish options (RAL).
 Contact us for the details on the MOQ.

PACKAGING & TRANSPORT

Ingenua	L (cm)	W (cm)	H (cm)	Weight (kg)	L (ft)	W (inch)	H (inch)	Weight (lbs)
Box pole	270	10	8,5	7,3	8'10.3"	3.9"	3.9"	16
Bag Sail	45	55	16	2,23 - 5,26	1'5.7"	1'9.7"	6.3"	5-11

NICE TO KNOW

- Spare parts available
- Designed and manufactured in Belgium
- Warranty between 10 and 2 years, please consult our warranty policy at www.umbrosa.com
- Download owner's manual (QR-code included), also available at www.umbrosa.com
- Storage bag included (PU coated fabric)
- Wind speeds up to 6 beaufort, 50 km/h, 31 mph when base is permanently fixed (for details, please check our wind spec sheet)
- Tested at TU Delft

SAFETY STATEMENTS & WARNINGS

- Product is suitable for light wind and/or light rain only.
- Position product in direction of wind as recommended in user manual.
- Do not use product in inclement weather, such as strong wind, thunderstorms, heavy rain or snow, and make sure that the umbrella is closed and stored in advance.
- Never allow the umbrella to flap in the wind. This could cause personal injury, damage to personal property, damage to umbrella and/or umbrella canopy.
- Close product and secure strap when not in use.
- Do not use product without its base or unless attached to building structure, and keep umbrella secured to umbrella base or mount at all times.
- Do not use product over or near harsh chemicals or open flames.
- Place product on stable and level surface.
- Do not allow children to assemble or operate product.
- Do not leave product unattended.
- Store product indoors during winter and extreme weather conditions.
- When adjusting or assembling the umbrella or umbrella base, make sure fingers, toes or any other parts of the body are clear from moving parts. Failing to do so may result in serious injury.
- Only use Umbrosa replacement parts.
- Read owner's manual.
- Any modifications to the product or failure to follow recommended care will void the warranty.
- Wind damage is not covered under our limited warranty.

MOUNTING OPTIONS PARASOL COLLECTIONS

FIXATION ON HARD GROUND

Round support to install the pole on a hard ground (concrete - wood) or on an Umbrosa base. For all collections except Ingenua.

ROUND SUPPORT MONO PARASOLS

Paraflex Mono	Infina Nano UX	Spectra 90° Eclisum UX	Spectra 80°Versa UX Icarus (UX)
ROUNDSUPPORTTYPE1	ROUNDSUPPORTTYPE2	ROTATIONSUPPORT-90 (support + rotation disc)	ROTATIONSUPPORT-80 (support + rotation disc)
			

	LxWxH cm	LxWxH ft	Weight kg/lbs	LxWxH cm packaging	LxWxH ft packaging	Weight kg/lbs packaging
ROUNDSUPPORTTYPE1	14x14x49	5.51"x5.51"x19.29"	2,5/5.5	50x22x22	19.69"x8.66"x8.66"	2,8 / 6.1
ROUNDSUPPORTTYPE2	13x13x41	5.12"x5.12"x16.14"	1,8/3.9	50x22x22	19.69"x8.66"x8.66"	2,8 / 6.1
ROTATIONSUPPORT-90	16x16x54	6.3"x6.3"x21.26"	5,3 / 11.6	50x22x22	19.69"x8.66"x8.66"	6,3 / 13.8
ROTATIONSUPPORT-80	16x16x54	6.3"x6.3"x21.26"	5,3 / 11.6	50x22x22	19.69"x8.66"x8.66"	6,3 / 13.8

Note: Rotational support to install the pole on a hard surface (wood-concrete) – notch in the surface is needed (see installation manual).
Alternatively you can order spacers from Umbrosa.

ROUND SUPPORT DUO, OPPOSITE AND MULTI PARASOLS

Spectra Duo	Spectra Opposite	Spectra Multi	Paraflex Duo & Multi
DUOROTATIONSUPPORT (support + rotation disc)	OPPROTATIONSUPPORT (support + rotation disc)	MULTISUPPORT	UM-ROUNDSUPPORT-90
			

	LxWxH cm	LxWxH ft	Weight kg/lbs	LxWxH cm packaging	LxWxH ft packaging	Weight kg/lbs packaging
DUOROTATIONSUPPORT	18x17x49	7.87"x7.87"x19.29"	11/24.2	50x22x22	19.69"x8.66"x8.66"	12/26.4
OPPROTATIONSUPPORT	20x16x54	7.09"x6.69"x21.26"	11,2/24.6	50x22x22	19.69"x8.66"x8.66"	12,2/26.8
MULTISUPPORT	20x20x49	7.87"x6.3"x21.26"	7,8/17.1	50x22x22	19.69"x8.66"x8.66"	8,8/19.3
UM-ROUNDSUPPORT-90	21,5x21,5x49	8.46"x8.46"x19.29"	3,8 / 8.3	50x22x22	19.69"x8.66"x8.66"	4,8/10.5

FIXATION IN SOFT GROUND

Concrete anchorage to install the pole in a "soft" ground pouring concrete.
For all collections except Ingenua.

INGROUNDANCHORTYPE1



	LxWxH cm	LxWxH ft	Weight kg/lbs	LxWxH cm packaging	LxWxH ft packaging	Weight kg/lbs packaging
INGROUNDANCHORTYPE1	13x13x41	5.12"x5.12"x16.14"	2,4/5.3	50x22x22	19.69"x8.66"x8.66"	3,4/7.4

MEDIUM TILE BASE STANDARD

Paraflex Mono | Infina

TILEBASE-M-ALU



Infina Black | Nano UX Full Black

TILEBASE-M-BLACK



Nano UX Architecture

TILEBASE-M-ARCHI



	LxWxH cm	LxWxH ft	Weight kg/lbs	LxWxH cm packaging	LxWxH ft packaging	Weight kg/lbs packaging
TILEBASE-M-COLOUR	88,6x88,6x17,5	34.88"x34.88"x6.89"	17/37.4	90x90x11	35.43"x35.43"x4.33"	18/39.6

Wheelset included

Recommended weight for tiles : 118 kg or 259.6 lbs

Recommended tiles Europe – 40x40x4,5 cm // USA – 16"x16"x1.75"

You need 8 tiles for the Medium Tile base – see Manual.

LARGE TILE BASE STANDARD

Paraflex Duo & Multi

Spectra | Icarus

TILEBASESTD-L-ALU



Spectra

TILEBASESTD-L-BLACK



	LxWxH cm	LxWxH ft	Weight kg/lbs	LxWxH cm packaging	LxWxH ft packaging	Weight kg/lbs packaging
TILEBASESTD-L-COLOUR	88,6x88,6x22	34.88"x34.88"x8.66"	17,5/37.4	90x90x16	35.43"x35.43"x6.3"	18/39.6

Wheelset included

Recommended weight for tiles : 177 kg or 389.4 lbs

Recommended tiles Europe – 40x40x4,5 cm // USA – 16"x16"x1.75"

You need 12 tiles for the Large Tile base – see Manual.

LARGE TILE BASE UX

Versa UX Archi
Eclisum UX Archi
 TILEBASEUX-L-ARCHI



Versa UX Full Black
EclisumUX Full Black
 TILEBASEUX-L-BLACK



Versa UX Sand
Icarus UX Sand
 TILEBASEUX-L-SAND



Cover: Thermo Poplar*

Versa UX Safari
Versa UX Latte
 TILEBASEUX-L-SAFARI
 TILEBASEUX-L-LATTE



Cover: Thermo Poplar*

*Our UX wooden covers are made of thermotreated poplar wood that has not been treated for color stability. The wood will weather with outdoor exposure and turn grey.

	LxWxH cm	LxWxH ft	Weight kg/lbs	LxWxH cm packaging	LxWxH ft packaging	Weight kg/lbs packaging
ARCHI/BLACK	88,8x88,8x22	34.96"x34.96"x8.66"	32/70.4	90x90x16	35.43"x35.43"x6.3"	33/72.6
SAND/ SAFARI/LATTE	88,8x88,8x24	34.96"x34.96"x9.45"	32/70.4	90x90x17	35.43"x35.43"x6.69"	33/72.6

Wheelset included

Recommended weight for tiles : 177 kg or 389.4 lbs

Recommended tiles Europe – 40x40x4,5 cm // USA – 16"x16"x1.75"

You need 12 tiles for the Large Tile Base UX – see manual.

MEDIUM FLAT BASE

Infina Alu
 FLATBASE-M-ALU



Infina Black
 FLATBASE-M-BLACK



Infina UX Latte
 FLATBASE-M-LATTE



Cover: Thermo Poplar*

*Our UX wooden covers are made of thermotreated poplar wood that has not been treated for color stability. The wood will weather with outdoor exposure and turn grey.

Extra weight plate compulsory for Infina 3x3m umbrella (FIBASEEXTRA)

	LxWxH cm	LxWxH ft	Weight kg/lbs	LxWxH cm packaging	LxWxH ft packaging	Weight kg/lbs packaging
BASE ALU / BLACK	73x73x8,5	28.74"x28.74"x3.35"	50/110	80x80x7	31.05"x31.05"x2.76"	51/112.2
BASE LATTE	78x78x10,5	30.7"x30.7"x4.1"	50/110	82x82x14	32.3"x32.3"x5.5"	51/112.2
Extra Weight	60x60x0,9	23.62"x23.62"x0.35"	20,5 / 45.1	62x62x1,1	24.41"x24.41"x0.43"	21/46.2

Wheelset included

MOUNTING OPTIONS FOR THE INGENUA COLLECTION

HARD SURFACE

UM-ROUNDSUPPORT-90



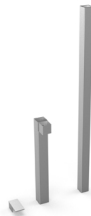
UM-ROUNDSUPPORT-80



	LxWxH cm	LxWxH ft	Weight kg/lbs	LxWxH cm packaging	LxWxH ft packaging	Weight kg/lbs packaging
UM-ROUNDSUPPORT-90	21,5x21,5x49	8.46"x8.46"x19.29"	3,8 / 8.3	50x22x22	19.69"x8.66"x8.66"	4,8/10.5
UM-ROUNDSUPPORT-80	21,5x21,5x49	8.46"x8.46"x19.29"	3,8 / 8.3	50x22x22	19.69"x8.66"x8.66"	4,8/10.5

SOFT SURFACE

INGROUNDANCHORAGE-90



INGROUNDANCHORAGE-80



	LxWxH cm	LxWxH ft	Weight kg/lbs	LxWxH cm packaging	LxWxH ft packaging	Weight kg/lbs packaging
INGROUNDANCHORAGE-90	90x15x4,5	35.43"x5.91"x1.97"	5,5 / 12.1	91x20x5	35.83"x7.87"x1.97"	6 / 13.2
INGROUNDANCHORAGE-80	90x15x4,5	35.43"x5.91"x1.97"	5,5 / 12.1	91x20x5	35.83"x7.87"x1.97"	6 / 13.2

NICE TO KNOW

- Spare parts available
- Designed and manufactured in Belgium
- Warranty between 10 and 2 years, please consult our warranty policy at www.umbrosa.com
- Download owner's manual (QR-code included), also available at www.umbrosa.com
- Wind speeds up to 6 beaufort, 50 km/h, 31 mph when base is permanently fixed (for details, please check our wind spec sheet)
- Tested at TU Delft

MOUNTING OPTIONS & BASES

SAFETY STATEMENTS & WARNINGS

- Product is suitable for light wind and/or light rain only.
- Position product in direction of wind as recommended in user manual.
- Do not use product in inclement weather, such as strong wind, thunderstorms, heavy rain or snow, and make sure that the umbrella is closed and stored in advance.
- Never allow the umbrella to flap in the wind. This could cause personal injury, damage to personal property, damage to umbrella and/or umbrella canopy.
- Close product and secure strap when not in use.
- Do not use product without its base or unless attached to building structure, and keep umbrella secured to umbrella base or mount at all times.
- Do not use product over or near harsh chemicals or open flames.
- Place product on stable and level surface.
- Do not allow children to assemble or operate product.
- Do not leave product unattended.
- Store product indoors during winter and extreme weather conditions.
- When adjusting or assembling the umbrella or umbrella base, make sure fingers, toes or any other parts of the body are clear from moving parts. Failing to do so may result in serious injury.
- Only use Umbrosa replacement parts.
- Read owner's manual.
- Any modifications to the product or failure to follow recommended care will void the warranty.
- Wind damage is not covered under our limited warranty.

MODELS

FULL BLACK

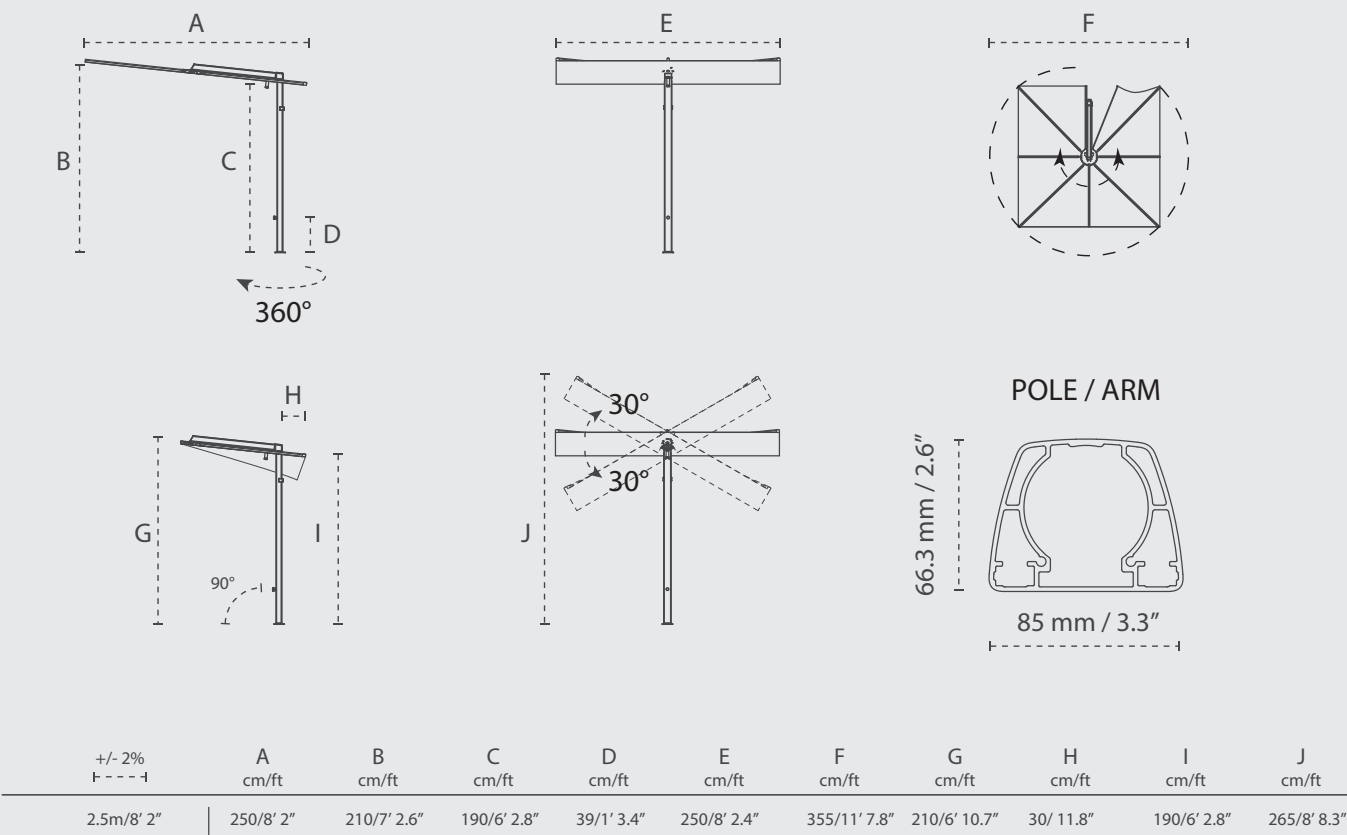


ARCHITECTURE

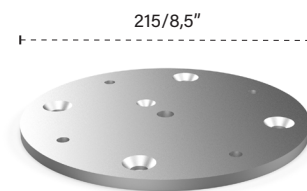
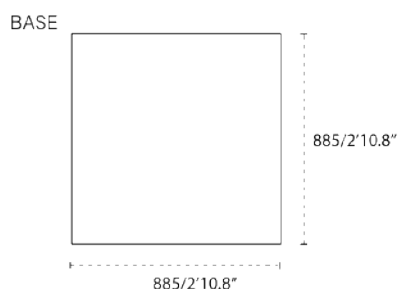


DIMENSIONS

NANO UX



DIMENSIONS BASE AND BASEBLATE (MM/FT)



Baseplate for installation on a hard surface and combined with an anchorage on a soft surface.

MATERIALS



FABRIC

Colorum – 100% Acryl 260 gr/m²
More details – see spec sheet Fabrics



RIBS

Aluminum ribs



POLE, ARM AND HANDLES

Aluminum powder coated RAL 9005
Black or RAL 9018 Papyrus White



BASE

Base: hot dip galvanised steel
Cover: Aluminum Powder coated RAL 9005 or RAL 9018

PACKAGING & TRANSPORT

NANO UX	L (cm)	W (cm)	H (cm)	Weight (kg)	L (ft)	W (inch)	H (inch)	Weight (lbs)
Umbrella box	205	31	17	25	6' 8.7"	1' 0.2"	6.7"	55
Medium base	88.6	88.6	10	17 kg	2'10.9"	2'10.9"	3.9"	37.4
Medium base package	95	95	15	18 kg	3'1.4"	3'1.4"	5.9"	39.6

NICE TO KNOW

- Spare parts available
- Designed and manufactured in Belgium
- Warranty between 10 and 2 years, please consult our warranty policy at www.umbrosa.com
- Download owner's manual (QR-code included), also available at www.umbrosa.com
- Storage bag included (Colorum Flanelle)
- Wind speeds up to 5 beaufort, 30 km/h, 18 mph when base is permanently fixed
- Tested at TU Delft

SAFETY STATEMENTS & WARNINGS

- Product is suitable for light wind and/or light rain only.
- Position product in direction of wind as recommended in user manual.
- Do not use product in inclement weather, such as strong wind, thunderstorms, heavy rain or snow, and make sure that the umbrella is closed and stored in advance.
- Never allow the umbrella to flap in the wind. This could cause personal injury, damage to personal property, damage to umbrella and/or umbrella canopy.
- Close product and secure strap when not in use.
- Do not use product without its base or unless attached to building structure, and keep umbrella secured to umbrella base or mount at all times.
- Do not use product over or near harsh chemicals or open flames.
- Place product on stable and level surface.
- Do not allow children to assemble or operate product.
- Do not leave product unattended.
- Store product indoors during winter and extreme weather conditions.
- When adjusting or assembling the umbrella or umbrella base, make sure fingers, toes or any other parts of the body are clear from moving parts. Failing to do so may result in serious injury.
- Only use Umbrosa replacement parts.
- Read owner's manual.
- Any modifications to the product or failure to follow recommended care will void the warranty.
- Wind damage is not covered under our limited warranty.

The content of this document, in particular the mentioned models, is protected by copyrights and/or design rights. The present document and its content is communicated to you for information purposes only. Any partial or total reproduction or any other use without our prior written permission is strictly prohibited. This technical sheet remains subject to possible changes. Of course we do our best to eliminate all mistakes, but Umbrosa is not responsible for the errors in the documentation of products. All measurements are approximate and are provided for informational purposes only.

MODEL





POSITIONS



COLORS

COLORUM	Marble	Curacao	Mint	Blush	Pepper	Almond	Sand	Flanelle	Black
SOLIDUM	Natural	Canvas	Grey	Taupe	All colors of the fabric range furniture grade Solids are available on special request with a minimum order quantity of 20 pcs. Frame color can be customised with a minimum order quantity of 20 pcs. Contact Umbrosa for more information.				
FRAME	Ral 1013	Ral 9005							

DIMENSIONS

	+/- 2% ┌-----┐	A cm/ft	B cm/ft	D mm/inch	E = A cm/ft	F cm/ft
	2m80/9' 2"	232/7' 7"	225/7' 5"	Ø50x2 / Ø2"x0.1"	232/7' 7"	86/2' 3
	3m20/10' 6"	232/7' 7"	225/7' 5"	Ø50x2 / Ø2"x0.1"	232/7' 7"	66/2' 2"
	2m/6' 7"	232/7' 7"	225/7' 5"	Ø50x2 / Ø2"x0.1"	232/7' 7"	86/2' 3
	2m30/7' 7"	232/7' 7"	225/7' 5"	Ø50x2 / Ø2"x0.1"	232/7' 7"	66/2' 2"

DIMENSIONS AND COLORS FOR BASE

Base Ø590 mm
Weight 40 kg



Black - Ral 9005



Concrete - natural

MATERIALS



FABRIC
Sunbrella - 100% Acryl 260gr/m²
Solidum - 100% Acryl 250gr/m²
More details - see spec sheet fabrics



RIBS
Aluminium, powder coated -
Ø 20/2 mm



POLE
Aluminium, powder coated -
Ø 50/2 mm



HANDLES
Casted aluminium, powder coated
Stainless steel 316, polished



BASE
Concrete base, coated

NICE TO KNOW

- Spare parts available
- Designed and manufactured in Belgium
- Warranty between 10 and 2 years, please consult our warranty policy at www.umbrosa.com
- Wind speeds up to 6 beaufort, 50 km/h, 31 mph when base is permanently fixed (for details, please check our wind spec sheet)

SAFETY STATEMENTS & WARNINGS

- Product is suitable for light wind and/or light rain only.
- Position product in direction of wind as recommended in user manual.
- Do not use product in inclement weather, such as strong wind, thunderstorms, heavy rain or snow, and make sure that the umbrella is closed and stored in advance.
- Never allow the umbrella to flap in the wind. This could cause personal injury, damage to personal property, damage to umbrella and/or umbrella canopy.
- Close product and secure strap when not in use.
- Do not use product without its base or unless attached to building structure, and keep umbrella secured to umbrella base or mount at all times.
- Do not use product over or near harsh chemicals or open flames.
- Place product on stable and level surface.
- Do not allow children to assemble or operate product.
- Do not leave product unattended.
- Store product indoors during winter and extreme weather conditions.
- When adjusting or assembling the umbrella or umbrella base, make sure fingers, toes or any other parts of the body are clear from moving parts. Failing to do so may result in serious injury.
- Only use Umbrosa replacement parts.
- Read owner's manual.
- Any modifications to the product or failure to follow recommended care will void the warranty.
- Wind damage is not covered under our limited warranty.

The content of this document, in particular the mentioned models, is protected by copyrights and/or design rights. The present document and its content is communicated to you for information purposes only. Any partial or total reproduction or any other use without our prior written permission is strictly prohibited. This technical sheet remains subject to possible changes. Of course we do our best to eliminate all mistakes, but Umbrosa is not responsible for the errors in the documentation of products. All measurements are approximate and are provided for informational purposes only.

MODELS



WALL



MONO



DUO

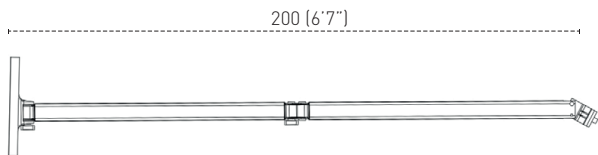


MULTI

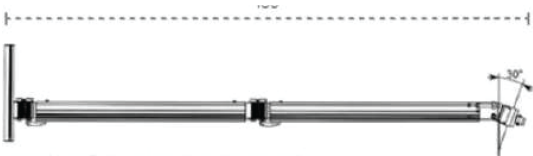
VERSIONS

Paraflex Neo holder

Contemporary – SQ 230 / R 300 / SQ 190 / R 270



Paraflex classic holder*



*MOQ only

POSITIONS



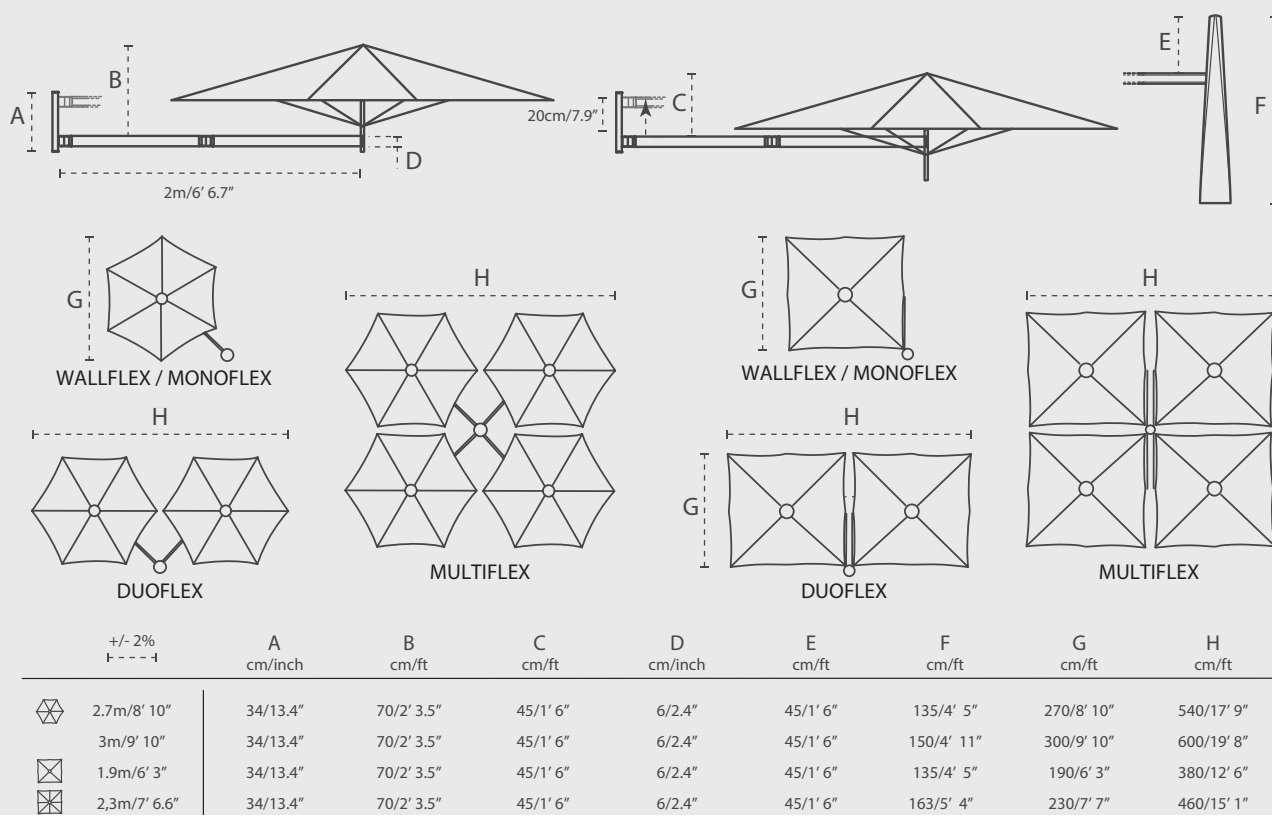
COLORS

	Marble	Curacao	Mint	Blush	Pepper	Almond	Sand	Flanelle	Black
COLORUM									
SOLIDUM									
	Natural	Canvas	Grey	Taupe					

All colors of the fabric range furniture grade Solids' (no stripes or patterns) are available on special request with a minimum order quantity of 10 pcs.
Contact Umbrosa for more information.

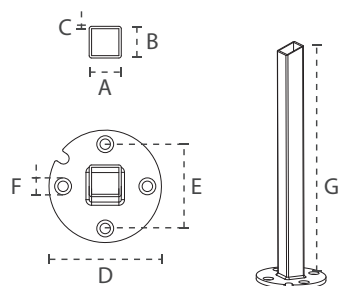
DIMENSIONS

NEO

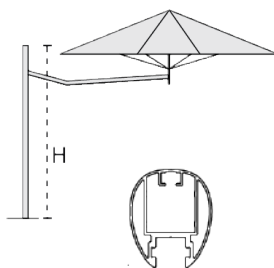


ROUND SUPPORT AND POLE OPTIONS

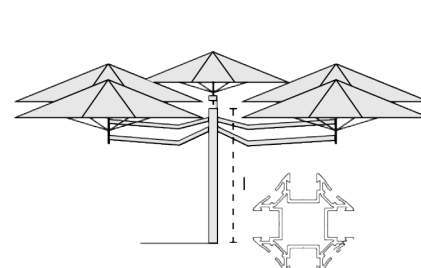
ROUND SUPPORT



SINGLE POLE



MULTI POLE

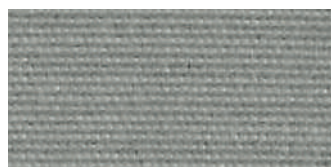


Material: Galvanised steel 8mm/0.3"

	A mm/inch	B mm/inch	C mm/inch	D mm/inch	E mm/inch	F mm/inch	G mm/inch	H cm/ft	I cm/ft
Round support	40/1.6"	40/1.6"	3/0.12"	140/5.5"	105/4.1"	11/0.43"	490/19"	220/7'3"	230/7'6"

For non-permanent base options – see spec sheet Installation Options

MATERIALS



FABRIC

Solidum – 100% Acryl 250 gr/m²
 Colorum – 100% Acryl 260 gr/m²
 More details – see spec sheet Fabrics



RIBS

Naturally anodized aluminum
 profiles



POLE

Naturally anodized aluminum

OTHER MATERIALS

Grip: PA6 30% Glass fiber
 Gear plates of stainless steel
 Umbrella parts: PA6
 Hinges: marine grade, stainless steel (316)

For projects – consult Umbrosa for powder coating finish options (RAL).
 Contact us for the details on the MOQ.

PACKAGING & TRANSPORT

PARAFLEX	L (cm)	W (cm)	H (cm)	Weight (kg)	L (ft)	W (ft)	H (ft)	Weight (lbs)
Box Neo holder 2m/6'6.7"	108	16	18	5.31 kg	3'6.5"	6.3"	7.1"	11.71
Box single pole 2,2m/7'3"	228	10	10	5.81 kg	7'5.8"	3.9"	3.9"	12.81
Box multi pole 2,3m/7'6"	235	13	13	9 kg	7'8"1/2	5.1"	5.1"	19.84
Umbrella	max. 190	16	16	2.62-	Max 5'10.9"	6.3"	6.3"	5.78-8.95
Base L STD package	95	95	20	18.5 kg	3'1.4"	3'1.4"	7.8"	40.7
Base M package	95	95	15	18 kg	3'1.4"	3'1.4"	5.9"	39.6

NICE TO KNOW

- Spare parts available
- Designed and manufactured in Belgium
- Warranty between 10 and 2 years, please consult our warranty policy at www.umbrosa.com
- Download owner's manual (QR-code included), also available at www.umbrosa.com
- Storage bag optional (PU coated fabric)
- Wind speeds up to 6 beaufort, 50 km/h, 31 mph when base is permanently fixed (for details, please check our wind spec sheet)
- Tested at TU Delft

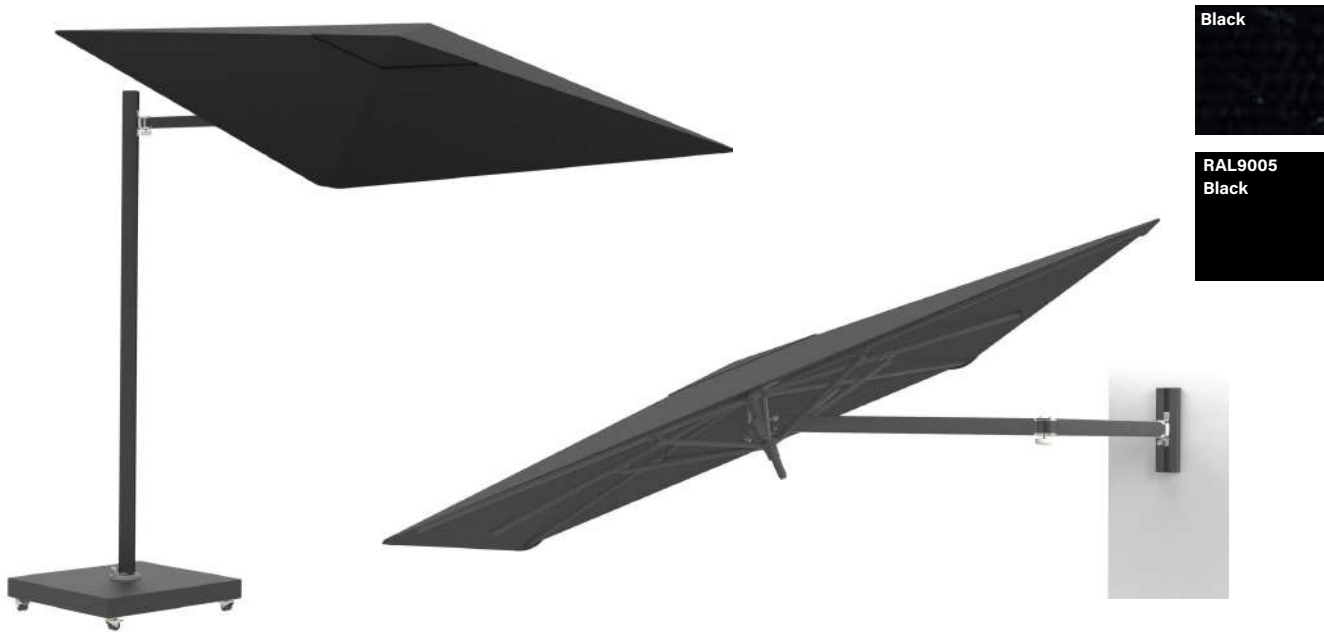
SAFETY STATEMENTS & WARNINGS

- Product is suitable for light wind and/or light rain only.
- Position product in direction of wind as recommended in user manual.
- Do not use product in inclement weather, such as strong wind, thunderstorms, heavy rain or snow, and make sure that the umbrella is closed and stored in advance.
- Never allow the umbrella to flap in the wind. This could cause personal injury, damage to personal property, damage to umbrella and/or umbrella canopy.
- Close product and secure strap when not in use.
- Do not use product without its base or unless attached to building structure, and keep umbrella secured to umbrella base or mount at all times.
- Do not use product over or near harsh chemicals or open flames.
- Place product on stable and level surface.
- Do not allow children to assemble or operate product.
- Do not leave product unattended.
- Store product indoors during winter and extreme weather conditions.
- When adjusting or assembling the umbrella or umbrella base, make sure fingers, toes or any other parts of the body are clear from moving parts. Failing to do so may result in serious injury.
- Only use Umbrosa replacement parts.
- Read owner's manual.
- Any modifications to the product or failure to follow recommended care will void the warranty.
- Wind damage is not covered under our limited warranty.

The content of this document, in particular the mentioned models, is protected by copyrights and/or design rights. The present document and its content is communicated to you for information purposes only. Any partial or total reproduction or any other use without our prior written permission is strictly prohibited. This technical sheet remains subject to possible changes. Of course we do our best to eliminate all mistakes, but Umbrosa is not responsible for the errors in the documentation of products. All measurements are approximate and are provided for informational purposes only.

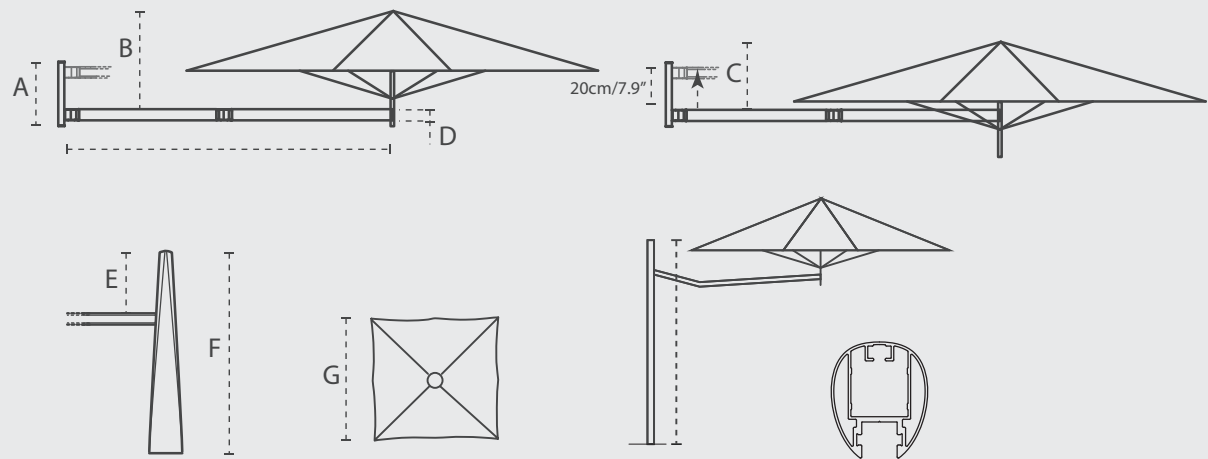
MODEL

FULL BLACK 230SQ | FULL BLACK 190SQ | WALL & MONO POLE



DIMENSIONS

PARAFLEX UX



	+/- 2% T - - - - T	A cm/inch	B cm/ft	C cm/ft	D cm/inch	E cm/ft	F cm/ft	G cm/ft	H cm/ft
☒	1,9m/6' 3"	34/13.4"	70/2' 3.5"	45/1' 6"	6/2.4"	45/1' 6"	135/4' 5"	190/6' 3"	220/7' 3"
☒	2,3m/7' 6.6"	34/13.4"	70/2' 3.5"	45/1' 6"	6/2.4"	45/1' 6"	163/5' 4"	230/7' 7"	220/7' 3"

MATERIALS



FABRIC

Colorum – 100% Acryl 260 gr/m²

More details – see spec sheet

Fabrics



RIBS

Aluminum, powder coated

RAL 9005



ARM, WALL AND POLE PROFILE

Aluminum, powder coated RAL 9005



HINGES

Black Anodised Aluminum

Stainless steel 316, polished

PACKAGING & TRANSPORT

PARAFLEX UX	L (cm)	W (cm)	H (cm)	Weight (kg)	L (ft)	W (inch)	H (inch)	Weight (lbs)
Paraflex UX Holder	180	16	16	5	5'10.9"	6.3"	6.3"	11
Umbrella	max. 180	16	16	2.62-4,06	max 5'10.9"	6.3"	6.3"	5.78-8,9
Box single pole 2,2m/7'3"	228	10	10	5,81 kg	7'5.8"	3.9"	3.9"	12.81
Base M Package	95	95	15	18 kg	3'1.4"	3'1.4"	5.9"	39.6

NICE TO KNOW

- Spare parts available
- Designed and manufactured in Belgium
- Warranty between 10 and 2 years, please consult our warranty policy at www.umbrosa.com
- Download owner's manual (QR-code included), also available at www.umbrosa.com
- Storage bag included (Colorum Flanelle)
- Wind speeds up to 5 beaufort, 30 km/h, 18 mph when base is permanently fixed

SAFETY STATEMENTS & WARNINGS

- Product is suitable for light wind and/or light rain only.
- Position product in direction of wind as recommended in user manual.
- Do not use product in inclement weather, such as strong wind, thunderstorms, heavy rain or snow, and make sure that the umbrella is closed and stored in advance.
- Never allow the umbrella to flap in the wind. This could cause personal injury, damage to personal property, damage to umbrella and/or umbrella canopy.
- Close product and secure strap when not in use.
- Do not use product without its base or unless attached to building structure, and keep umbrella secured to umbrella base or mount at all times.
- Do not use product over or near harsh chemicals or open flames.
- Place product on stable and level surface.
- Do not allow children to assemble or operate product.
- Do not leave product unattended.
- Store product indoors during winter and extreme weather conditions.
- When adjusting or assembling the umbrella or umbrella base, make sure fingers, toes or any other parts of the body are clear from moving parts. Failing to do so may result in serious injury.
- Only use Umbrosa replacement parts.
- Read owner's manual.
- Any modifications to the product or failure to follow recommended care will void the warranty.
- Wind damage is not covered under our limited warranty.

The content of this document, in particular the mentioned models, is protected by copyrights and/or design rights. The present document and its content is communicated to you for information purposes only. Any partial or total reproduction or any other use without our prior written permission is strictly prohibited. This technical sheet remains subject to possible changes. Of course we do our best to eliminate all mistakes, but Umbrosa is not responsible for the errors in the documentation of products. All measurements are approximate and are provided for informational purposes only.

MODELS



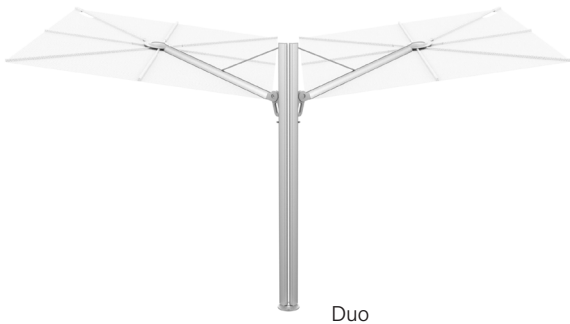
Straight



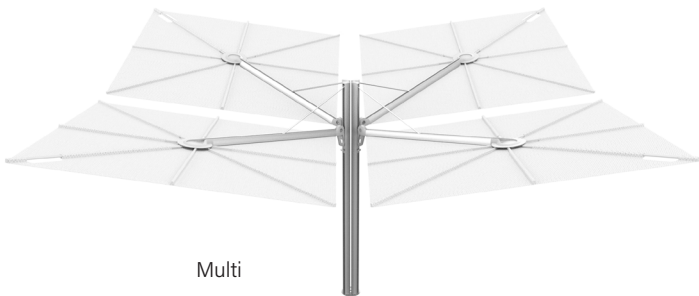
Forward



Opposite



Duo



Multi

POSITIONS

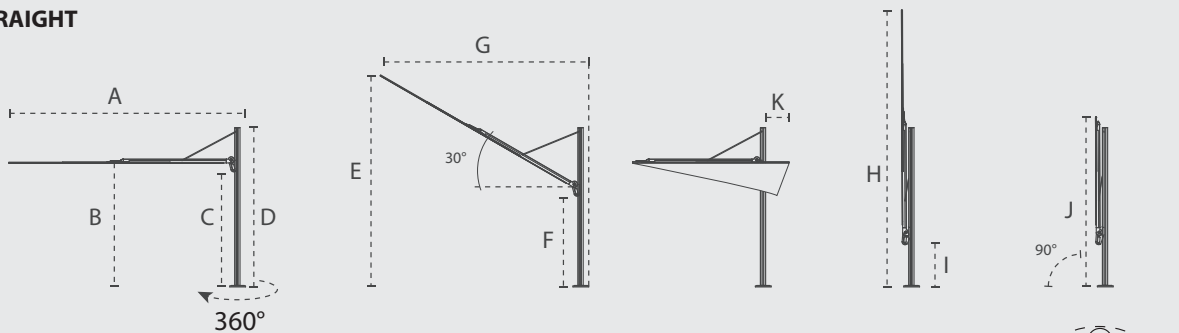


COLORS

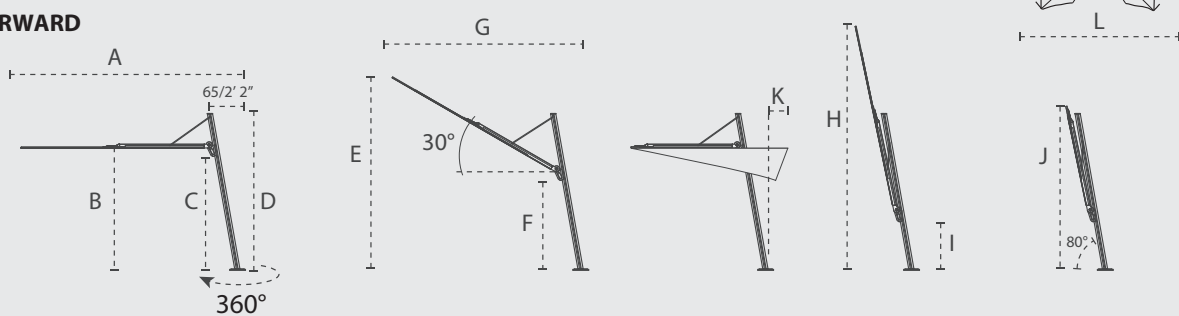
	Marble	Curacao	Mint	Blush	Pepper	Almond	Sand	Flanelle	Black
COLORUM									
SOLIDUM					<p>All colors of the fabric range furniture grade Solids' (no stripes or patterns) are available on special request with a minimum order quantity of 10 pcs. Contact Umbrosa for more information.</p>				
	Natural	Canvas	Grey	Taupe					

DIMENSIONS

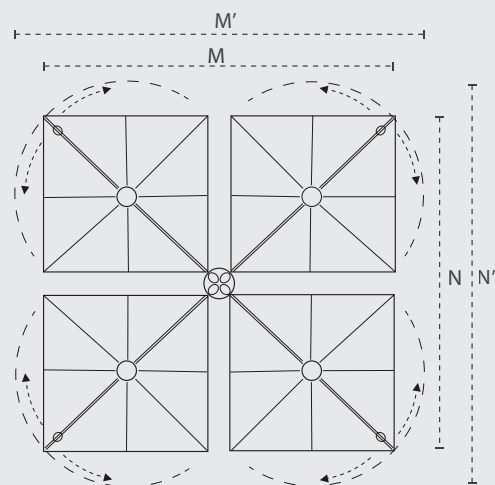
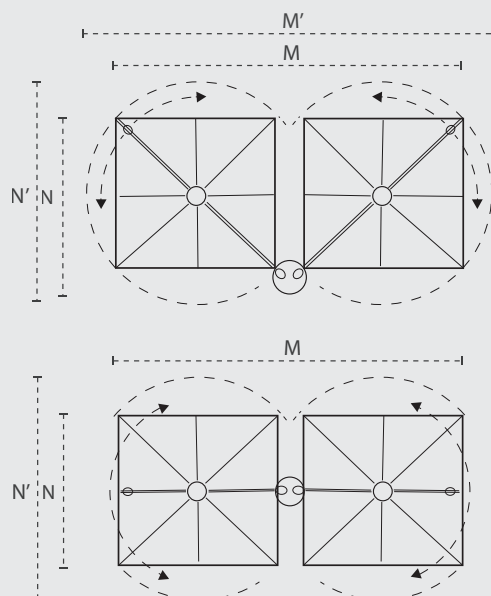
STRAIGHT



FORWARD



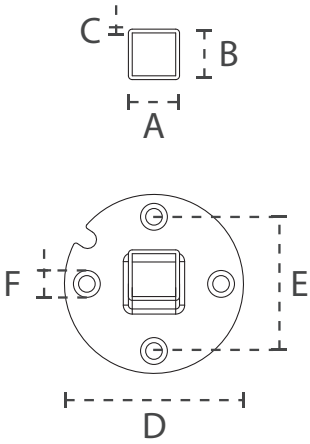
		A	B	C	D	E	F	G	H	I	J	K	L
		cm/ft	cm/ft	cm/ft	cm/ft	cm/ft	cm/ft	cm/ft	cm/ft	cm/ft	cm/ft	cm/ft	cm/ft
Straight	2.5m/8' 2"	295/9' 8"	200/6' 7"	185/6' 1"	260/8' 7"	270/8' 10.3"	135/4' 5"	240/7' 10.5"	360/11' 10"	90/2' 11"	260/8' 7"	35/1' 1.8"	370/12' 2"
	3m/9' 10"	345/11' 4"	205/6' 9"	185/6' 1"	260/8' 7"	280/9' 2"	140/4' 7"	250/8' 2.4"	400/13' 2"	80/2' 8"	270/8' 10"	50/1' 7.7"	435/14' 3"
Forward	2.5m/8' 2"	330/10' 10"	195/6' 5"	180/5' 11"	255/8' 8"	270/8' 10.3"	135/4' 5"	305/10'	350/11' 6"	90/2' 11"	260/8' 7"	0/ 0"	370/12' 2"
	3 m/9' 10"	380/12' 6"	195/6' 5"	180/5' 11"	255/8' 8"	280/9' 2"	140/4' 7"	315/10' 4"	390/12' 10"	80/2' 8"	260/8' 7"	5/ 1.97"	435/14' 3"



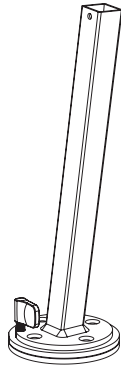
	A	B	C	D	E	F	G	J	I	M	M'	N	N'
	cm/ft	cm/ft	cm/ft	cm/ft	cm/ft	cm/ft	cm/ft	cm/ft	cm/ft	cm/ft	cm/ft	cm/ft	cm/ft
Spectra Duo	253/8' 4"	197/6' 6"	187/6' 2"	260/8' 7"	340/11' 2"	135/4' 5"	210/6' 10.7"	270/8' 10"	50/1' 7.7"	540/17' 9"	644/21' 2"	285/9' 4"	337/11' 1"
Spectra Multi	253/8' 4"	197/6' 6"	187/6' 2"	260/8' 7"	340/11' 2"	140/4' 7"	210/6' 10.7"	270/8' 10"	50/1' 7.7"	540/17' 9"	644/21' 2"	540/17' 9"	644/21' 2"
Opposite 250	295/9' 8"	200/6' 7"	185/6' 1"	260/8' 7"	270/8' 10"	110/3' 7"	240/7' 10.5"	260/8' 6.4"	90/2' 11.4"	560/18' 4.5"	n/a	250/8' 2"	370/12' 2"
Opposite 300	345/11' 4"	205/6' 9"	185/6' 1"	260/8' 7"	280/9' 2"	110/3' 7"	250/8' 2.4"	270/8' 10"	80/2' 7.5"	660/21' 7.8"	n/a	300/9' 10"	435/14' 3"

DIMENSIONS / MATERIALS SPIGOT

SINGLE

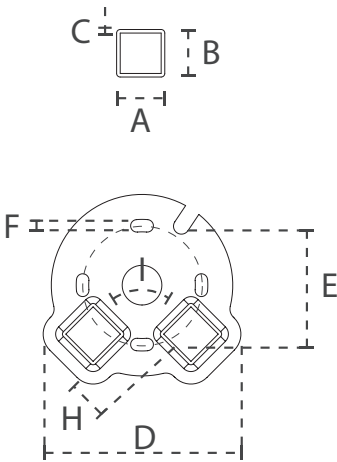


Material: Galvanised steel 8mm/0.3"

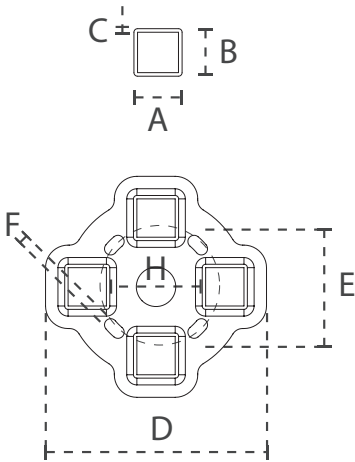


Geomet (marine grade)
coated steel 8mm/0.3"
Nylon 1mm/0.04"

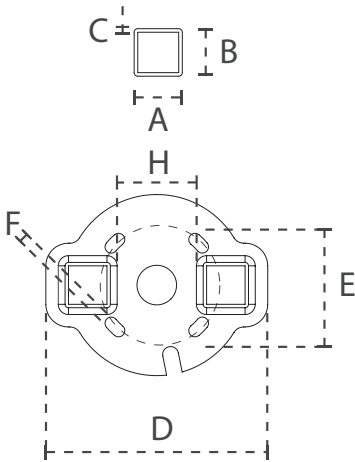
DUO



MULTI

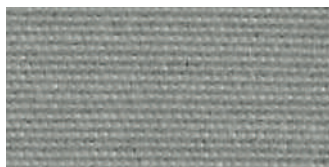


OPPOSITE



	A	B	C	D	E	F	G	H	I
	mm/inch	mm/inch	mm/inch	mm/inch	mm/inch	mm/inch	mm/inch	mm/inch	mm/inch
Straight/Forward	40/1.6"	40/1.6"	3/0.12"	140/5.5"	170/6.7"	11/0.43"	490/17.3"	-	-
Duo	40/1.6"	40/1.6"	3/0.12"	174/6.8"	170/6.7"	11/0.43"	490/17.3"	40/1.6"	45
Multi	40/1.6"	40/1.6"	3/0.12"	196/7.7"	170/6.7"	11/0.43"	490/17.3"	80/3.1"	45
Opposite	40/1.6"	40/1.6"	3/0.12"	196/7.7"	170/6.7"	11/0.43"	490/17.3"	80/3.1"	-

MATERIALS



FABRIC

Solidum – 100% Acryl 250 gr/m²

Colorum – 100% Acryl 260 gr/m²

More details – see spec sheet Fabrics

Confection Scheme:



250 SQ
300 SQ



300 SQ
Colorum



RIBS

Glass fiber ribs - Ø 16mm - 0.63"



POLE

Naturally anodized aluminum.

Also available in

Black (RAL 9005)*



OTHER MATERIALS

Handle: casted aluminum, powder coated RAL 7047 TEC.

For Black Spectra in RAL 9005 TEC*

For projects – consult Umbrosa for powder coating finish options (RAL).

Contact us for the details on the MOQ.

*RAL 9005 not available in the US, except with MOQ.

PACKAGING & TRANSPORT

Spectra	L (cm)	W (cm)	H (cm)	Weight (kg)	L (ft)	W (ft)	H (ft)	Weight (lbs)
Umbrella box	274	37	32	32	8'11.8"	1'2.6"	1'0.6"	70
Base L STD	88.6	88.6	15	17.5 kg	2'10.9"	2'10.9"	5.9"	38.5
Base L STD package	95	95	20	18.5 kg	3'1.4"	3'1.4"	7.8"	40.7

NICE TO KNOW

- Spare parts available
- Designed and manufactured in Belgium
- Warranty between 10 and 2 years, please consult our warranty policy at www.umbrosa.com
- Download owner's manual (QR-code included), also available at www.umbrosa.com
- Storage bag included (PU coated fabric)
- Wind speeds up to 6 beaufort, 50 km/h, 31 mph when base is permanently fixed (for details, please check our wind spec sheet)
- Tested at TU Delft

SAFETY STATEMENTS & WARNINGS

- Product is suitable for light wind and/or light rain only.
- Position product in direction of wind as recommended in user manual.
- Do not use product in inclement weather, such as strong wind, thunderstorms, heavy rain or snow, and make sure that the umbrella is closed and stored in advance.
- Never allow the umbrella to flap in the wind. This could cause personal injury, damage to personal property, damage to umbrella and/or umbrella canopy.
- Close product and secure strap when not in use.
- Do not use product without its base or unless attached to building structure, and keep umbrella secured to umbrella base or mount at all times.
- Do not use product over or near harsh chemicals or open flames.
- Place product on stable and level surface.
- Do not allow children to assemble or operate product.
- Do not leave product unattended.
- Store product indoors during winter and extreme weather conditions.
- When adjusting or assembling the umbrella or umbrella base, make sure fingers, toes or any other parts of the body are clear from moving parts. Failing to do so may result in serious injury.
- Only use Umbrosa replacement parts.
- Read owner's manual.
- Any modifications to the product or failure to follow recommended care will void the warranty.
- Wind damage is not covered under our limited warranty.

The content of this document, in particular the mentioned models, is protected by copyrights and/or design rights. The present document and its content is communicated to you for information purposes only. Any partial or total reproduction or any other use without our prior written permission is strictly prohibited. This technical sheet remains subject to possible changes. Of course we do our best to eliminate all mistakes, but Umbrosa is not responsible for the errors in the documentation of products. All measurements are approximate and are provided for informational purposes only.

MODEL



3M Square



3.5M Round

FRAME COLORS

Ral 9016

Papyrus white

Ral 1013

Beige Limestone

Grey Beige

Earth Clay

Ral 9005

Black

☒ VEFRAMEPAPY_UX

☒ VEFRAME350ROPAPY_UX

VEFRAMELIME_UX

VEFRAME350ROLIME_UX

VEFRAMEGREYB_UX

VEFRAME350ROGREYB_UX

VEFRAMEEARTH_UX

VEFRAME350ROEARTH_UX

VEFRAMEBLACK_UX

VEFRAME350ROBLACK_UX

FABRIC COLORS

Natural



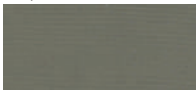
Canvas



Grey



Taupe



☒ VE300COVERNAT_UX

☒ VE350ROCOVERNAT_UX

VE300COVERCANV_UX_R

VE350ROCOVERCANV_UX

VE300COVERGREY_UX

VE350ROCOVERGREY_UX

VE300COVERTAUPE_UX

VE350ROCOVERTAUPE_UX

Marble



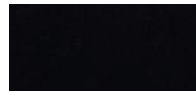
Sand



Flanelle



Black



☒ VE300COVERMARB_UX

☒ VE350ROCOVERMARB_UX

VE300COVERSAND_UX_R

VE350ROCOVERSAND_UX

VE300COVERFLAN_UX

VE350ROCOVERFLAN_UX

VE300COVERBLACK_UX

VE350ROCOVERBLACK_UX

BASES

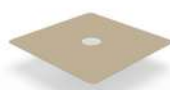
TOPPLATE



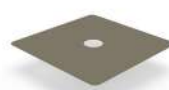
RAL 9018 - Papyrus white
PAPYBASETOPPLATEUX



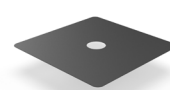
RAL 1013 - Beige limestone
LIMEBASETOPPLATEUX



Grey Beige
GREYBBASETOPPLATEUX



Earth Clay
EARTHBASETOPPLATEUX



RAL 9005 - Black
BLACKBASETOPPLATEUX



Thermo poplar*
WOODBASETOPPLATEUX

BASE FRAME



RAL 9018 - Papyrus white
PAPYBASEFRAMEUX



RAL 1013 - Beige limestone
LIMEBASEFRAMEUX



Grey Beige
GREYBBASEFRAMEUX



Earth Clay
EARTHBASEFRAMEUX

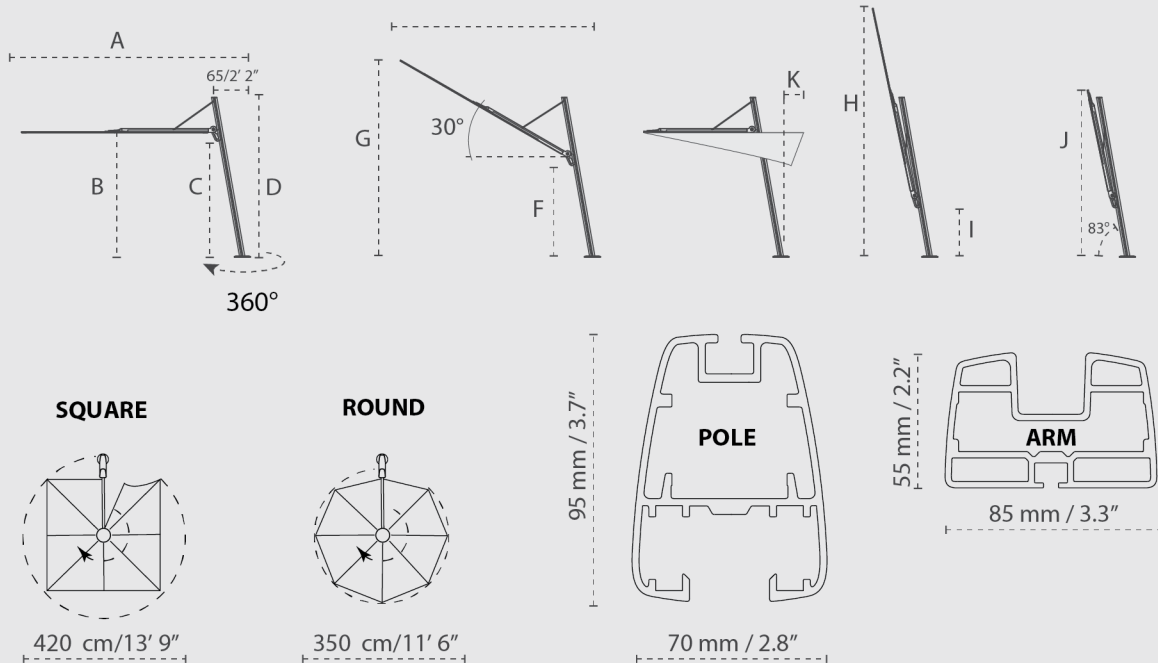


RAL 9005 - Black
BLACKBASEFRAMEUX

*Our UX wooden covers are made of thermotreated poplar wood that has not been treated for color stability. The wood will weather with outdoor exposure and turn grey.

DIMENSIONS

VERSA PX



		A	B	C	D	E	F	G	H	I	J	K
		cm/ft	cm/ft	cm/ft	cm/ft	cm/ft	cm/ft	cm/ft	cm/ft	cm/ft	cm/ft	cm/ft
☒	3 x 3 m / 9' 10" x 9' 10"	365/11' 12"	195/6' 5"	185/6' 1"	260/8' 6"	280/9' 2"	128/4' 2"	325/10' 8"	410/13' 5"	77/2' 6"	265/8' 8"	0/ 0"
⊗	3,5 m / 11' 6"	380/12' 6"	195/6' 5"	185/6' 1"	260/8' 6"	295/9' 8"	128/4' 2"	340/11' 2"	425/13' 11"	77/2' 6"	280/9' 2"	0/ 0"

DIMENSIONS BASE



Wheelset included

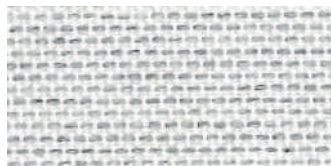
Recommended weight for tiles : 177 kg or 389.4 lbs

Recommended tiles Europe – 40x40x4,5 cm // USA – 16"x16"x1.75"

You need 12 tiles for the Large Tile Base UX – see manual.

Base dimensions	L x W x H cm	L x W x H ft	weight kg/lbs
Powder coated topplate	88,8x88,8x22	34.96"x34.96"x8.66"	32/70.4
Wood topplate	88,8x88,8x24	34.96"x34.96"x9.45"	32/70.4

MATERIALS



FABRIC

Colorum – 100% Acryl 260 gr/m²

Solidum – 100% Acryl 250 gr/m²

More details – see spec sheet Fabrics



RIBS

Glass fiber ribs – Ø 16mm/0.63"



POLE

Aluminum,
powder coated



HANDLES

Casted aluminum, powder coated
Stainless steel 316, polished



BASE FRAME

Galvanised steel, powder coated

RAL 9018 Papyrus White, RAL 9005

Black, RAL 1013 Limestone Beige,

Earth Clay, Grey Beige



BASE TOPPLATE

Galvanised steel, powder coated

RAL 9018 Papyrus white, RAL 9005 Black, RAL 1013

Limestone Beige, Earth Clay, Grey Beige

Wooden cover Thermo Poplar*

*Our UX wooden covers are made of thermotreated poplar wood that has not been treated for color stability. The wood will weather with outdoor exposure and turn grey.

PACKAGING & TRANSPORT

Versa UX	L (cm)	W (cm)	H (cm)	Weight (kg)	L (ft)	W (ft)	H (ft)	Weight (lbs)
Umbrella box	274	37	32	32	8'11.8"	1'2.6"	1'0.6"	70
Base L UX Black/Archi	88.8	88.8	15	32 kg	2'11"	2'11"	5.9"	70.4
Base L UX Black / Archi package	95	95	20	33 kg	3'1.4"	3'1.4"	5.9"	72.6
Base L UX Sand / Safari / Latte	88.8	88.8	16.5	32 kg	2'11"	2'11"	6.5"	70.4
Base L UX Sand / Safari / Latte package	95	95	20	33 kg	3'1.4"	3'1.4"	5.9"	72.6

NICE TO KNOW

- Spare parts available
- Designed and manufactured in Belgium
- Warranty between 15 and 2 years, see Warranty Sheet
- Manual included
- Wind speeds up to 5 beaufort, 30km/h, 18 mph when base is permanently fixed

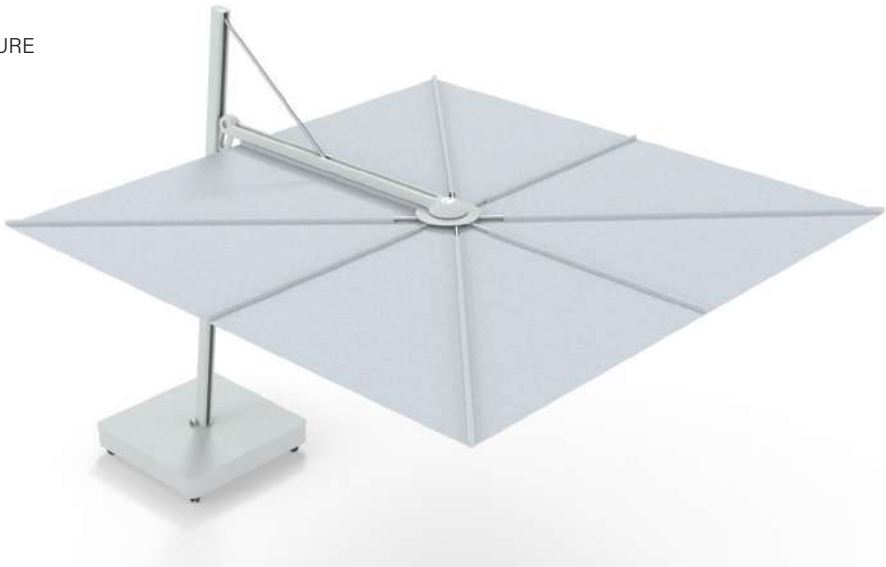
SAFETY STATEMENTS & WARNINGS

- Product is suitable for light wind and/or light rain only.
- Position product in direction of wind as recommended in user manual.
- Do not use product in inclement weather, such as strong wind, thunderstorms, heavy rain or snow, and make sure that the umbrella is closed and stored in advance.
- Never allow the umbrella to flap in the wind. This could cause personal injury, damage to personal property, damage to umbrella and/or umbrella canopy.
- Close product and secure strap when not in use.
- Do not use product without its base or unless attached to building structure, and keep umbrella secured to umbrella base or mount at all times.
- Do not use product over or near harsh chemicals or open flames.
- Place product on stable and level surface.
- Do not allow children to assemble or operate product.
- Do not leave product unattended.
- Store product indoors during winter and extreme weather conditions.
- When adjusting or assembling the umbrella or umbrella base, make sure fingers, toes or any other parts of the body are clear from moving parts. Failing to do so may result in serious injury.
- Only use Umbrosa replacement parts.
- Read owner's manual.
- Any modifications to the product or failure to follow recommended care will void the warranty.
- Wind damage is not covered under our limited warranty.

The content of this document, in particular the mentioned models, is protected by copyrights and/or design rights. The present document and its content is communicated to you for information purposes only. Any partial or total reproduction or any other use without our prior written permission is strictly prohibited. This technical sheet remains subject to possible changes. Of course we do our best to eliminate all mistakes, but Umbrosa is not responsible for the errors in the documentation of products. All measurements are approximate and are provided for informational purposes only.

MODELS

ARCHITECTURE



Marble

RAL 9018
Papyrus White

FULL BLACK



Black

RAL9005
Black

SAND



Sand

RAL 1013
Beige
Limestone

Thermo
Poplar*

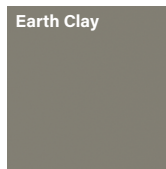
SAFARI



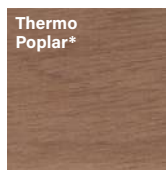
Sand



Earth Clay



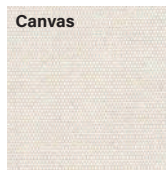
Thermo
Poplar*



LATTE



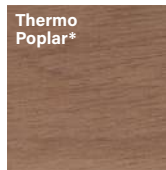
Canvas



Grey Beige

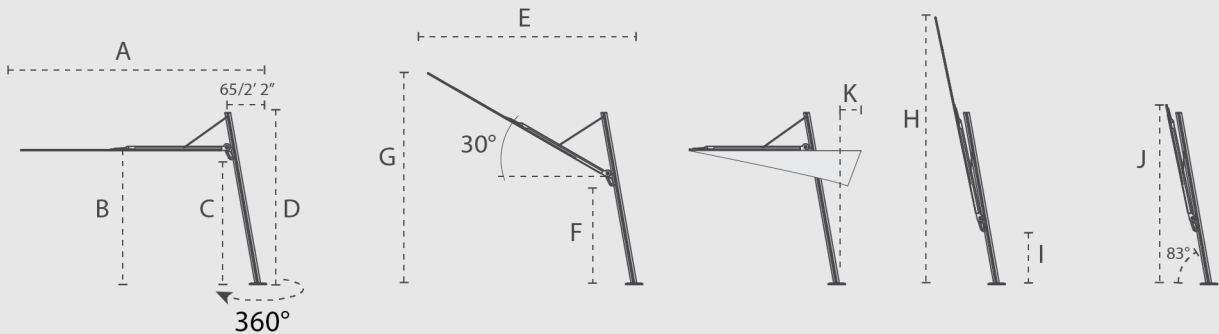


Thermo
Poplar*

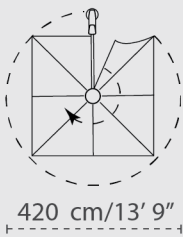


DIMENSIONS

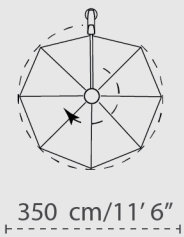
ARCHITECTURE / FULL BLACK / SAND / LATTE / SAFARI



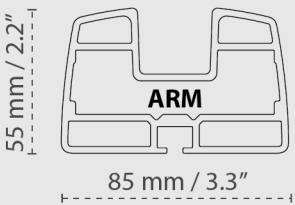
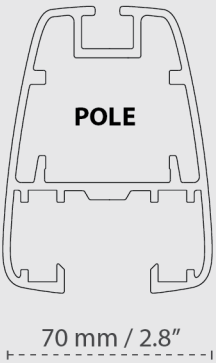
ARCHITECTURE
FULL BLACK / SAND



LATTE / SAFARI



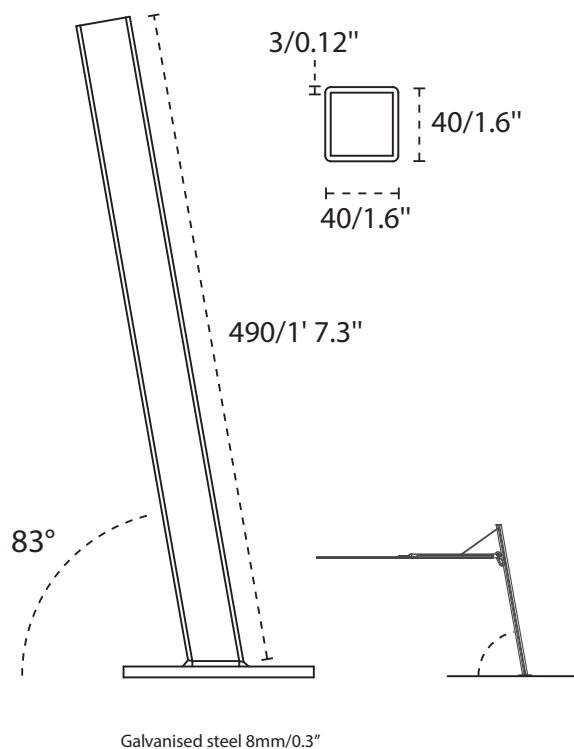
95 mm / 3.7"



		A	B	C	D	E	F	G	H	I	J	K
		cm/ft	cm/ft	cm/ft	cm/ft	cm/ft	cm/ft	cm/ft	cm/ft	cm/ft	cm/ft	cm/ft
☒	3 x 3 m / 9' 10" x 9' 10"	365/11' 12"	195/6' 5"	185/6' 1"	260/8' 6"	280/9' 2"	128/4' 2"	325/10' 8"	410/13' 5"	77/2' 6"	265/8' 8"	0/ 0"
☒	3,5 m / 11' 6"	380/12' 6"	195/6' 5"	185/6' 1"	260/8' 6"	295/9' 8"	128/4' 2"	340/11' 2"	425/13' 11"	77/2' 6"	280/9' 2"	0/ 0"

DIMENSIONS / MATERIALS SPIGOT (mm/ft)

ARCHITECTURE / FULL BLACK / SAND / SAFARI / LATTE



MATERIALS



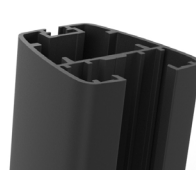
FABRIC

Colorum - 100% Acryl 260 gr/m²
Solidum - 100% Acryl 250 gr/m²
More details - see spec sheet Fabrics



RIBS

Glass fiber ribs - Ø 16mm/0.63"



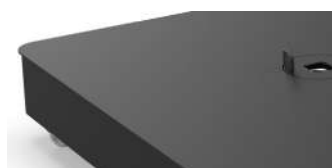
POLE

Aluminum,
powder coated



HANDLES

Casted aluminum, powder coated
Stainless steel 316, polished



ARCHITECTURE / FULL BLACK

Galvanised steel, powder coated
RAL 9018 Papyrus White and
RAL 9005 Black



BASE SAND / SAFARI / LATTE

Galvanised steel, powder coated
RAL 1013 Limestone Beige, Earth Clay, Grey Beige
Wooden cover Thermo Poplar*

*Our UX wooden covers are made of thermotreated poplar wood that has not been treated for color stability. The wood will weather with outdoor exposure and turn grey.

PACKAGING & TRANSPORT

Versa UX	L (cm)	W (cm)	H (cm)	Weight (kg)	L (ft)	W (ft)	H (ft)	Weight (lbs)
Umbrella box	274	37	32	32	8'11.8"	1'2.6"	1'0.6"	70
Base L UX Black/Archi	88.8	88.8	15	32 kg	2'11"	2'11"	5.9"	70.4
Base L UX Black / Archi package	95	95	20	33 kg	3'1.4"	3'1.4"	5.9"	72.6
Base L UX Sand / Safari / Latte	88.8	88.8	16.5	32 kg	2'11"	2'11"	6.5"	70.4
Base L UX Sand / Safari / Latte package	95	95	20	33 kg	3'1.4"	3'1.4"	5.9"	72.6

NICE TO KNOW

- Spare parts available
- Designed and manufactured in Belgium
- Warranty between 10 and 2 years, please consult our warranty policy at www.umbrosa.com
- Download owner's manual (QR-code included), also available at www.umbrosa.com
- Storage bag included (Colorum Flanelle)
- Wind speeds up to 5 beaufort, 30 km/h, 18 mph when base is permanently fixed
- Tested at TU Delft

SAFETY STATEMENTS & WARNINGS

- Product is suitable for light wind and/or light rain only.
- Position product in direction of wind as recommended in user manual.
- Do not use product in inclement weather, such as strong wind, thunderstorms, heavy rain or snow, and make sure that the umbrella is closed and stored in advance.
- Never allow the umbrella to flap in the wind. This could cause personal injury, damage to personal property, damage to umbrella and/or umbrella canopy.
- Close product and secure strap when not in use.
- Do not use product without its base or unless attached to building structure, and keep umbrella secured to umbrella base or mount at all times.
- Do not use product over or near harsh chemicals or open flames.
- Place product on stable and level surface.
- Do not allow children to assemble or operate product.
- Do not leave product unattended.
- Store product indoors during winter and extreme weather conditions.
- When adjusting or assembling the umbrella or umbrella base, make sure fingers, toes or any other parts of the body are clear from moving parts. Failing to do so may result in serious injury.
- Only use Umbrosa replacement parts.
- Read owner's manual.
- Any modifications to the product or failure to follow recommended care will void the warranty.
- Wind damage is not covered under our limited warranty.