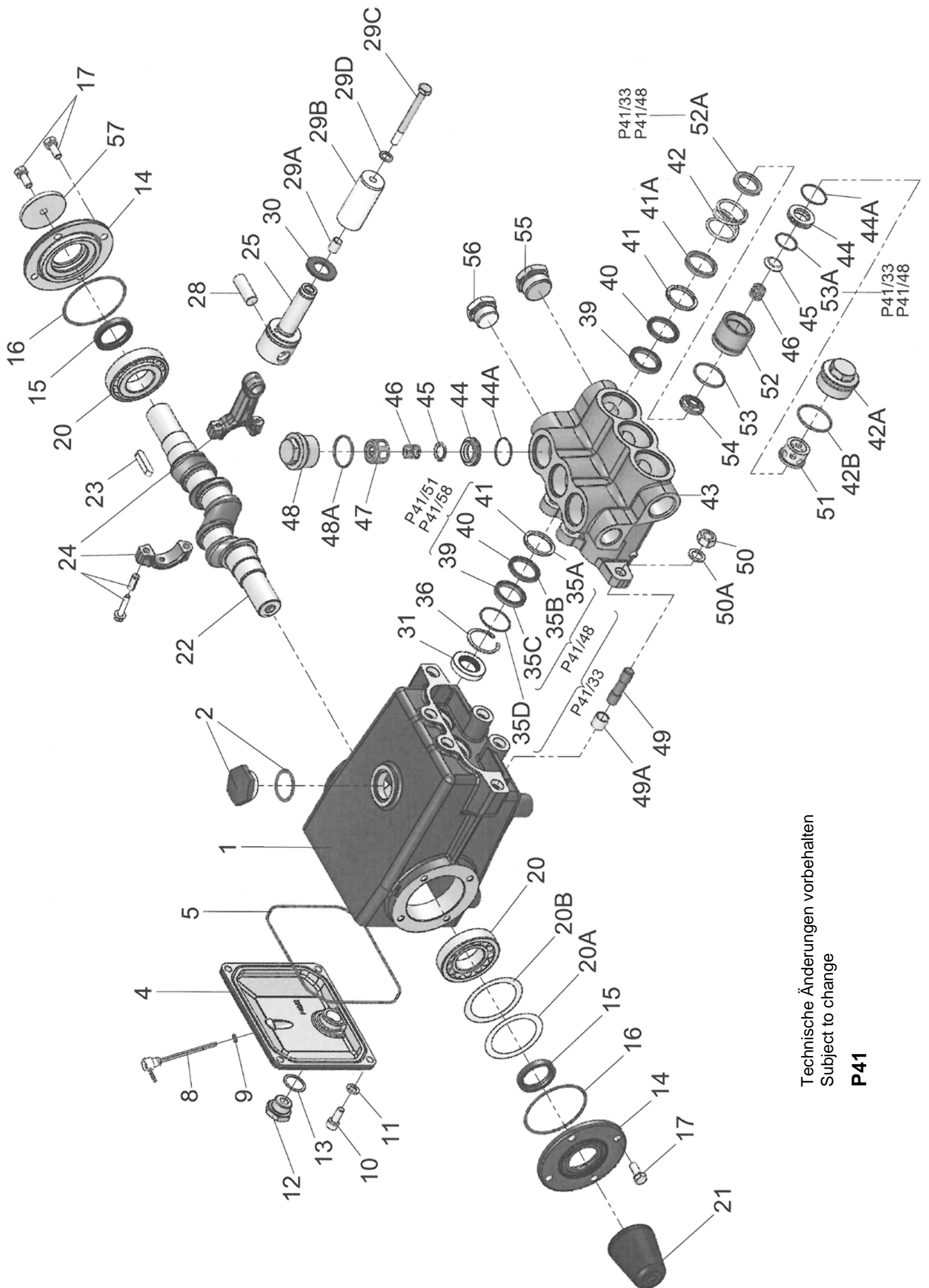


<b>Ersatzteilverzeichnis</b>	<b>P41/33-250 Best.-Nr.: 00.1001</b>	<b>P41/58-110 Best. Nr.: 00.0998</b>
<b>Spare Parts List</b>	<b>P41/48-180 Code Nr.: 00.1000</b>	<b>P41/70-110 Code Nr.: 00.6364</b>
	<b>P41/51-130</b>	<b>00.0999</b>

Lfd. Nr. Item No.	Stückzahl No. Off	Best.-Nr. Code No.	Benennung	Description
1	1	01.0462	Antriebsgehäuse	Crankcase
2	1	00.2914	Olauffüllstopfen kpl.	Oil Filler Plug Assy
4	1	03.0155	Getriebedeckel	Crankcase Cover
5	1	06.0262	O-Ring	O-Ring
8	1	00.0388	Olmeßstab kpl.	Oil Dipstick Assy
9	1	06.0053	O-Ring	O-Ring
10	4	21.0026	Innensechskantschraube	Hexagon Socket Screw
11	4	07.2994	Federring	Spring Ring
12	1	07.0705	Stopfen G1/2	Plug G1/2
13	1	06.0067	O-Ring	O-Ring
14	2	03.0156	Lagerdeckel	Bearing Cover
15	2	06.0263	Radialwellendichtring	Radial Shaft Seal
16	2	06.0577	O-Ring	O-Ring
17	9	21.0034	Sechskantkombischraube	Hexagon Combi-Screw
20	2	05.0099	Kegelrollenlager	Taper Roller Bearing
20A	2	07.0859	Paßscheibe	Fitting Disc
20B	2	07.1961	Paßscheibe	Fitting Disc
21	1	07.4564	Wellenschutz	Shaft Protector
22	1	11.0127	Kurbelwelle	Crankshaft
22	1	11.0777	Kurbelwelle P41/70	Crankshaft P41/70
23	1	07.3050	Paßfeder	Fitting Key
24	3	00.3289	Gleitlagerpleuel kpl.	Connecting Rod Assy
25	3	00.1007	Kreuzkopf kpl.	Crosshead Assy
28	3	11.0253	Kreuzkopfbolzen	Crosshead Pin
29A	3	07.0862	Zentrierhülse	Centring Sleeve
29B	3	11.0266	Plungerrohr P41/33	Plunger Pipe P41/33
29B	3	11.0265	Plungerrohr P41/48	Plunger Pipe P41/48
29B	3	11.0264	Plungerrohr P41/51	Plunger Pipe P41/51
29B	3	11.0242	Plungerrohr P41/58 P41/70	Plunger Pipe P41/58 P41/70
29C	3	21.0331	Spannschraube	Tension Screw
29D	3	06.0275	Cu-Dichtring	Copper Ring
30	3	07.2838	Olabstreifer	Oil Scraper
31	3	06.0265	Radialwellendichtring	Radial Shaft Seal
35A	3	07.0885	Manschettensstützring P41/33	Sleeve Support Ring P41/33
35A	3	07.0898	Manschettensstützring P41/48	Sleeve Support Ring P41/48
35B	3	06.0112	Manschette P41/33	Sleeve P41/33
35B	3	06.0281	Manschette P41/48	Sleeve P41/48
35C	3	07.0886	Druckring P41/33	Pressure Ring P41/33
35C	3	07.0899	Druckring P41/48	Pressure Ring P41/48
35D	3	06.0277	O-Ring P41/33	O-Ring P41/33
36	3	07.0865	Seegerring	Clip Ring
39	3	07.0921	Druckring P41/33	Pressure Ring P41/33
39	3	07.1092	Druckring P41/48	Pressure Ring P41/48
39	6	07.0894	Druckring P41/51	Pressure Ring P41/51
39	6	07.0866	Druckring P41/58, P41/70	Pressure Ring P41/58, P41/70
40	3	06.0295	Manschette P41/33	Sleeve P41/33
o40	3	06.0297	Manschette P41/48	Sleeve P41/48
+40	6	06.0280	Manschette P41/51	Sleeve P41/51
x40	6	06.0266	Manschette P41/58, P41/70	Sleeve P41/58, P41/70
41	3	07.0927	Stützring P41/33	Support Ring P41/33
41	3	07.1093	Stützring P41/48	Support Ring P41/48
41	6	07.0895	Stützring P41/51	Support Ring P41/51
41	6	07.0867	Stützring P41/58, P41/70	Support Ring P41/58, P41/70
41A	3	07.0916	Distanzring P41/33, P41/48	Spacer Ring P41/33, P41/48
41A	3	07.0904	Zwischenring P41/51, P41/58, P41/70	Spacer Ring P41/51, P41/58, P41/70
42	3	07.0933	Spannfeder P41/33, P41/48	Tension Spring P41/33, P41/48
42	3	07.0802	Spannfeder P41/51, P41/58, P41/70	Tension Spring P41/51, P41/58, P41/70
42A	3	07.1430	Stopfen M36x1.5 P41/33, P41/48	Plug M36x1.5 P41/33, P41/48
42A	3	07.1916	Stopfen M42x1.5 P41/51, P41/58, P41/70	Plug M42x1.5 P41/51, P41/58, P41/70
••o42B	3	06.0285	O-Ring P41/33, P41/48	O-Ring P41/33, P41/48
oo+x42B	3	06.0256	O-Ring P41/51, P41/58, P41/70	O-Ring P41/51, P41/58, P41/70
43	1	01.0492	Ventilgehäuse P41/33, P41/48	Valve Casing P41/33, P41/48
43	1	01.0491	Ventilgehäuse P41/51, P41/58, P41/70	Valve Casing P41/51, P41/58, P41/70
••oo44	6	07.0873	Ventilsitz	Valve Seat
••oo44A	6	06.0267	O-Ring	O-Ring
••oo45	6	07.3913	Ventilplatte	Valve Plate
••oo46	6	07.0893	Ventilfeder	Valve Spring
••oo47	3	07.0871	Federspannschale	Spring Tension Cap
48	3	07.0908	Stopfen M36x1.5 P41/33, P41/48	Plug M36x1.5 P41/33, P41/48
48	3	07.0872	Stopfen M36x1.5 P41/51, P41/58, P41/70	Plug M36x1.5 P41/51, P41/58, P41/70
••oo 48A	3	06.0285	O-Ring	O-Ring
49	6	21.0269	Stiftschraube	Stud Bolt
49A	2	07.0874	Zentrierhülse	Centring Sleeve
50	6	07.0988	Sechskantmutter	Hexagon Nut
50A	6	07.2707	Scheibe	Disc
51	3	07.1798	Abstandsrohr	Spacer Pipe
52	3	07.1876	Saugventilaufnahme P41/33, P41/48	Suction Valve Adaptor P41/33, P41/48
52	3	07.1914	Saugventilaufnahme P41/51, P41/58, P41/70	Suction Valve Adaptor P41/51, P41/58, P41/70
52A	3	07.0916	Distanzring P41/33, P41/48	Spacer Ring P41/33, P41/48
••o 53	3	06.0255	O-Ring P41/33, P41/48	O-Ring P41/33, P41/48
oox+53	3	06.0285	O-Ring P41/51, P41/58, P41/70	O-Ring P41/51, P41/58, P41/70
••53A	3	06.0279	O-Ring P41/33, P41/48	O-Ring P41/33, P41/48
••oo54	3	07.1877	Federspannscheibe	Spring Tension Disc
55	1	07.1008	Stopfen G1	Plug G1
56	1	07.2085	Stopfen G3/4	Plug G3/4
57	1	07.0796	Scheibe für Kurbelwelle	Disc for Crankshaft
1	1	00.1194	Antrieb kpl. P41/33 (1-31/49-50A/57)	Gear Assy P41/33 (1-31/49-50A/57)
1	1	00.1263	Antrieb kpl. P41/48 (1-31/49-50A/57)	Gear Assy P41/48 (1-31/49-50A/57)
1	1	00.1264	Antrieb kpl. P41/51 (1-31/49-50A/57)	Gear Assy P41/51 (1-31/49-50A/57)
1	1	00.1195	Antrieb kpl. P41/58 (1-31/49-50A/57)	Gear Assy P41/58 (1-31/49-50A/57)
1	1	00.6391	Antrieb kpl. P41/70 (1-31/49-50A/57)	Gear Assy P41/70 (1-31/49-50A/57)
1	1	00.1262	Pumpenkopf kpl. P41/33 (35A-48A/51-56)	Pump Head Assy P41/33 (35A-48A/51-56)
1	1	00.1265	Pumpenkopf kpl. P41/48 (35A-48A/51-56)	Pump Head Assy P41/48 (35A-48A/51-56)
1	1	00.1266	Pumpenkopf kpl. P41/51 (36-48A/51-56)	Pump Head Assy P41/51 (36-48A/51-56)
1	1	00.1261	Pumpenkopf kpl. P41/58/70 (36-48A/51-56)	Pump Head Assy P41/58/70 (36-48A/51-56)
•	1	14.0052	Rep. Satz Dichtungen P41/33	Seal Repair Kit P41/33
o	1	14.0051	Rep. Satz Dichtungen P41/48	Seal Repair Kit P41/48
+	1	14.0050	Rep. Satz Dichtungen P41/51	Seal Repair Kit P41/51
x	1	14.0049	Rep. Satz Dichtungen P41/58, P41/70	Seal Repair Kit P41/58, P41/70
••	1	14.0048	Rep. Satz Ventile P41/33, P41/48	Valve Repair Kit P41/33, P41/48
oo	1	14.0047	Rep. Satz Ventile P41/51, P41/58/70	Valve Repair Kit P41/51, P41/58/70

Bei Bestellung von Ersatzteilen bitte Bestell-Nr., Pumpen-Nr. und -type angeben  
 When ordering please state Code No., Pump Model and Pump Serial No.



Technische Änderungen vorbehalten  
 Subject to change

**P41**