

GU-6836\_ref

SPECIFICATIONS  
MODEL SR12C1SM  
SELF-PROPELLED  
AERIAL PLATFORM

AICHI CORPORATION

## Major Specifications

Platform capacity	250 kg
Max. platform height	12.1 m ground to platform floor
Max. outreach	10.7 m
Operational speed	
Boom extension	25 seconds
Boom retraction	25 seconds
Boom elevation	35 seconds (with Boom fully retracted)
Boom lowering	35 seconds (with Boom fully retracted)
Boom rotation	0.75 rpm
Boom elevation angle	-19 to 70 degrees
Boom rotation angle	360 degrees (continuous)
Traveling speed	0 to 1.5 km/h
Platform rotation angle	90 degrees to either direction
Engine : Model	Yanmar 3TNV88-EPAS, diesel water-cooled
Max. output	18.9(2,400) kW(rpm) {25.7/2,400 PS/rpm}
Max. torque	88(1,440) N·m(rpm) {9.0/1,440 kgf-m/rpm}
Total displacement	1.642 liters
Electrical system	12 V
Fuel tank capacity	95 liters

## Major Specifications

### Dimensions :

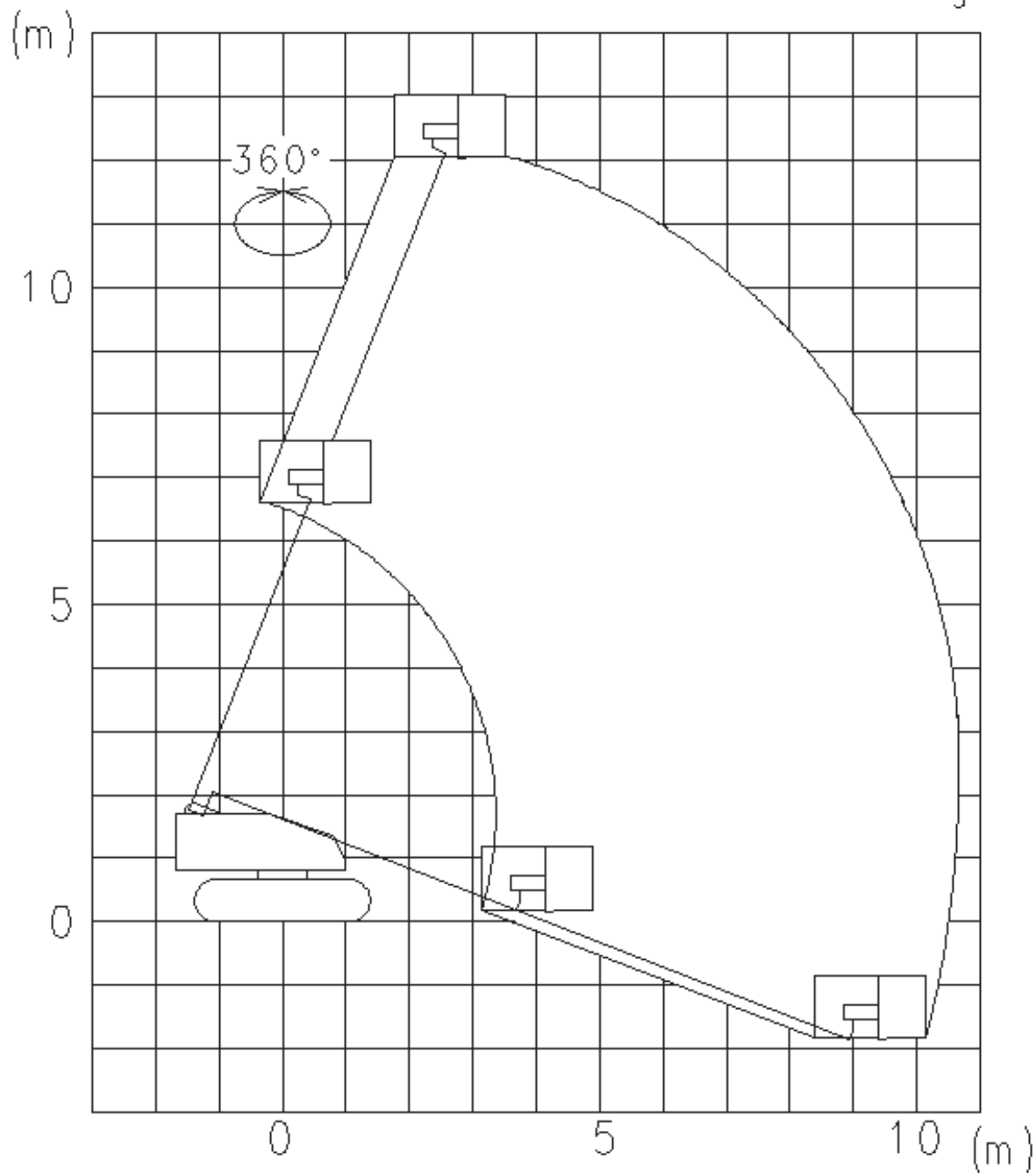
Overall length (stowed)	6,340 mm
Overall width (stowed)	2,250 mm
Overall height (stowed)	1,995 mm
Tumbler center distance	2,045 mm
Crawler center distance	1,850 mm
Crawler shoe width	450 mm
Tail swing	625 mm
Min. ground clearance	340 mm
Gross weight of machine	7,500 kg
Platform size	1,800 × 750 × 1,100 mm
Traveling	Two hydraulic motors
Boom elevation	Double-acting hydraulic cylinder
Boom telescoping	”
Boom rotation	Hydraulic piston motor & worm gear speed reducer
Platform leveling	Two hydraulic cylinders
Control :	
Proportional control	Traveling, elevation, rotation & telescoping
ON-OFF control	Platform rotation
Hydraulic oil reservoir capacity	145 liters
Hydraulic oil	ISO No.22
Max. hydraulic pressure	210 kg/cm <sup>2</sup>

※ Dimensional tolerance is subject to the standard established by AICHI.

Working diagram chart

Platform load : max 250kg

積載荷重 250kg



- Note 1. This chart does not show any boom deflection.  
2. This chart is based on firm surface ground.