

# GLOBE<sup>®</sup>

MADE IN ITALY

since  
**1961**

*New!!!*

TYPE 27



**PATENTED**

**CERAMIC-POWER**



- NEW CERAMIC GRAIN
- VERY HIGH REMOVAL
- MORE DURABILITY
- REDUCTION OF WORKING TIME
- REDUCTION OF ENERGY/LABOUR COST



GRINDING

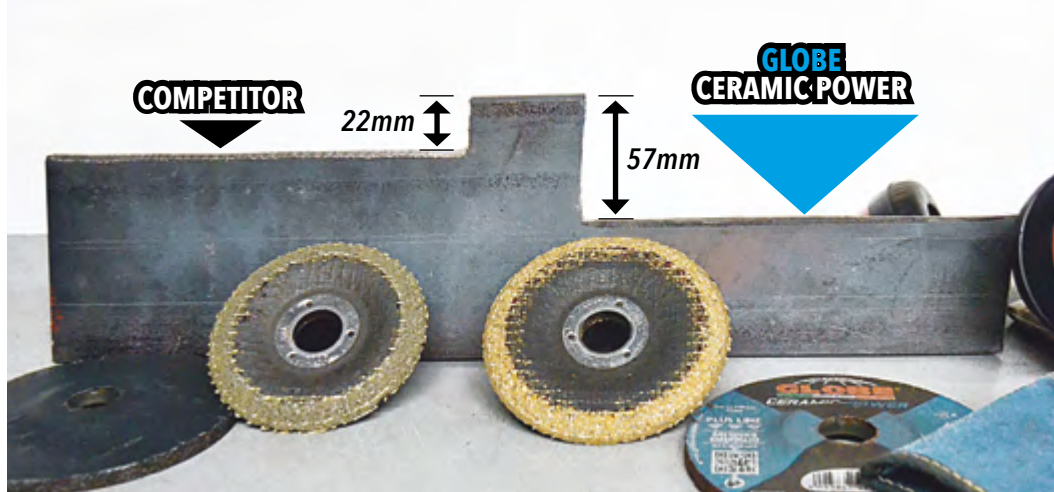
GLOBE is proud to present **THE NEW LINE OF CERAMIC GRINDING AND CUTTING WHEELS**. The ceramic grain (of the best quality) differs from corundum and alumina zirconia for its very high grinding/cutting speed, as well as for its long durability. Another highly appreciated feature is the low workload required from the operator for grinding/cutting operations. This results in less effort, making operations more comfortable, increasing productivity. The particularly sharp ceramic grain give high abrasion, reduce friction of harmful rubbing (and heat generation) and maximize the grinding/cutting work with consequent reduction of pitting that otherwise would have to be removed with different products (e.g. flap discs). **CERAMIC POWER GUARANTEES 360° SAVINGS IN TERMS OF: TIME, ELECTRICITY, LABOUR AND NUMBER OF DISCS USED.**



Microscope detail of ceramic grain.



Each ceramic grain (smaller and sharper than the corundum type) contains hundreds of thousands of microcrystals which, thanks to a self-sharpening process, doubles the disc's durability and efficiency thus increasing abrasion capacity and precision.



LAB TEST (on 12mm mild steel plate) with a corundum disc (COMPETITOR) and GLOBE CERAMIC POWER.

### A GIANT STEP IN THE RANGE OF GRINDING DISCS SG 24 SBF CER

115x6,5x22,23	Art. Code G0368
125x6,5x22,23	Art. Code G0369
150x7,0x22,23	Art. Code G0370
180x7,0x22,23	Art. Code G0371
230x7,0x22,23	Art. Code G0372

The new and special **CERAMIC POWER** disc was specifically conceived for the removal of welding seams, heavy grinding, removal of residues, edge grinding, chamfering and grinding of steel (including stainless steel). The special new generation mixture, the special combination of ceramic grains and the regular wear of the disc allow to carry out in a very short time unparalleled and uniform removal with minimum heat development and without burns.

### SHORTER GRINDING TIME AND HIGHER REMOVAL RATE

Increased productivity and efficiency thanks to the special ceramic grain mixture, allowing a very high removal rate (+58% compared to corundum wheels). Unique on the market, drastically reduces working times.

### GREAT DURABILITY AND GREATER SAVINGS

The special ceramic mixture conceived by GLOBE gives the disc an unprecedented durability, allowing to use less electricity and discs, with consequent economic and productivity benefits. All this,

together with less waste, fewer stops for changing discs and more logistic advantages, make **CERAMIC POWER** an environmentally friendly abrasive product.

### GREATER OPERATOR COMFORT AND MORE ACCURATE WORKINGS

The high removal capacity and short working times requires less pressure from the operator and makes work less hard, more productive and more economical. In addition, the regular edge wear allows more precise grinding and less stress for the grinder, extending its lifetime.

### ALL THE ADVANTAGES OF GLOBE CERAMIC POWER (GRINDING)

- VERY HIGH REMOVAL CAPACITY
- FASTER AND MORE PRECISE ON ANY MATERIAL
- OPERATOR COMFORT AND EASE OF USE
- LESS VIBRATIONS
- GREATER PRECISION
- ULTRA-FAST GRINDING WITHOUT PITTING
- EXTREMELY LONG LIFETIME
- REDUCED ENERGY AND LABOUR COSTS





Some GLOBE CERAMIC POWER grinding discs and their packaging (patented) to preserve the discs' quality during storage.



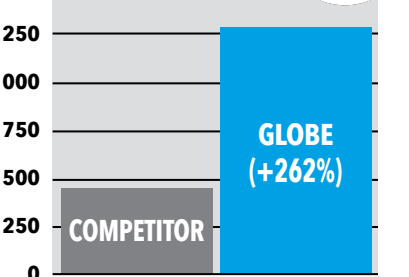
The application of GLOBE CERAMIC POWER on heavy workings.



GLOBE CERAMIC POWER maintains an high work precision on every surface.

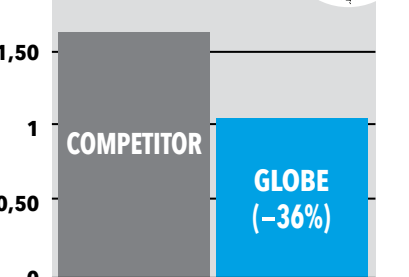
# LAB TEST OF GRINDING ON BAR (MILD STEEL)12mm

**TOTAL GRAMS REMOVED**  
(up to the end of disc)



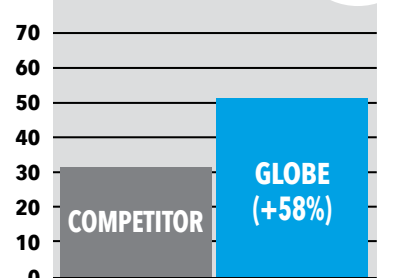
COMPETITOR (AL. OX.): 480 gr  
**GLOBE CERAMIC POWER: 1.260 gr**

**ENERGY CONSUMPTION**



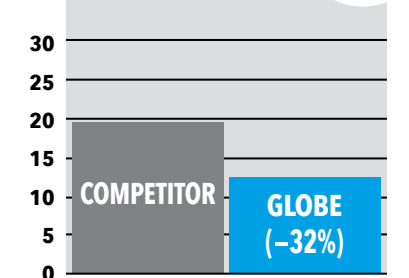
COMPETITOR (AL. OX.): 1,65 Kwh/Kg  
**GLOBE CERAMIC POWER: 1,05 Kwh/Kg**

**REMOVAL SPEED**



COMPETITOR (AL. OX.): 32,0 gr/min.  
**GLOBE CERAMIC POWER: 50,4 gr/min.**

**COST PER KG REMOVED**



COMPETITOR (AL. OX.): 19,8€/Kg  
**GLOBE CERAMIC POWER: 13,4€/Kg**

# EVOLUTION AND REVOLUTION IN THE GRINDING WORLD

## THE MAIN ADVANTAGES OF VIBLOCK



VIBRATION  
DAMPENING



HIGHER REMOVAL  
SPEED



MORE  
COMFORT



GREATER DISC  
BALANCE



COST  
REDUCTION

CERAMIC POWER in combination with the new set of damping flanges **VIBLOCK** (PATENTED), **VIBRATIONS ARE ALMOST NIL**, noise is reduced and user comfort becomes comparable to that of grinding with flap discs but offering much greater productivity and precision of work. In addition, the quality of grinding is very high with low surface roughness. The machine control is improved thanks to the very low vibrations, which regulates the contact between grinding wheel and workpiece, allowing works of excellent precision and finishing. All this also makes work easier for less experienced users who can carry out delicate grinding operations with greater ease.



**3 ASSEMBLY STEPS:**  
**VIBLOCK** is simple to assemble.

**OPERATION:**  
**VIBLOCK** improves performance and durability of the disc, reducing operator's fatigue.

### METHOD OF USE

- Disconnect the power supply every time you install or disassemble a grinding wheel on the grinding machine.
- Use only with wheels manufactured by GLOBE: the profile of wheels made by other manufacturers may be different.
- Use only with depressed center grinding wheels. Do not use with flat wheels.
- The grinding wheel sliding against the rubberized support during tightening/disassembling could wear it out precociously; to avoid wear, keep the shaft of the grinding machine locked with the appropriate button and tighten/unscrew the front threaded flange with the appropriate wrench.



Use and safety informations



**GLOBE**  
MADE IN ITALY  
INDUSTRIA ABRASIVI PARMENSE-GLOBE s.r.l.

Via La Spezia, 160 - 43126 Parma - Italy  
Tel. +39.0521.293943 - export@globeabrasives.com - www.globeabrasives.com

Member of  
**S**  
Organization  
for the Safety of Abrasives