

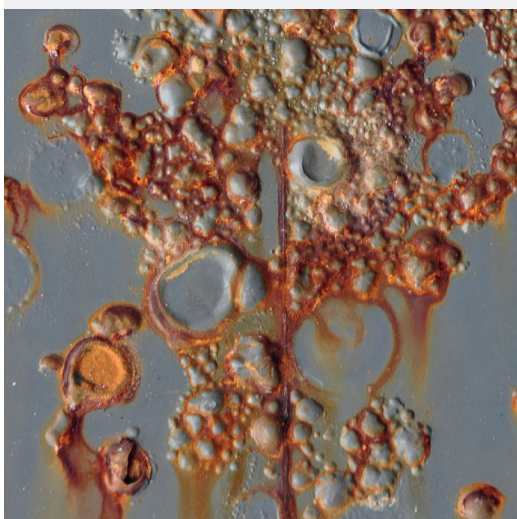
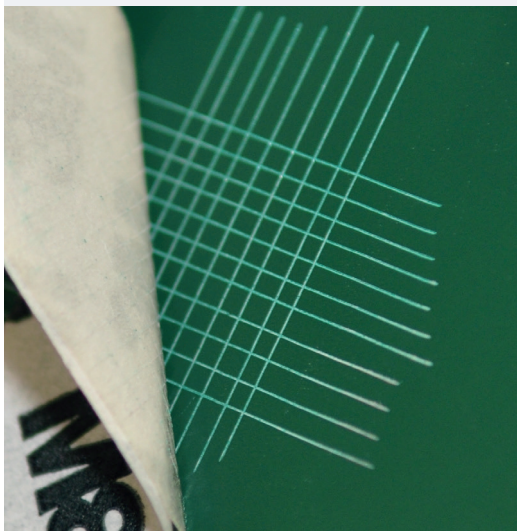
# Overview of our technical specifications :



	Cryltane DTS 20	Cryltane DTS 40	Cryltane DTS 60	Cryltane DTS 80
<b>Gloss Gardner 60°</b>	20 (± 5)	40 (± 10)	60 (± 10)	80 (± 10)
<b>Density</b>	1.40 ± 0.05 g/ml	1.35 ± 0.05 g/ml	1.33 ± 0.05 g/ml	1.45 ± 0.05 g/ml
<b>Potlife at 20°C</b>	± 5 h	± 6 h	± 6 h	± 5 h
<b>Solids content</b> • In volume • in weight	60 ± 2% 74 ± 2%	60 ± 2% 75 ± 2%	62 ± 2% 74 ± 2%	76 ± 2% 58 ± 2%
<b>VOC</b> • Undiluted	< 370 g/L	< 377 g/L	< 355 g/L	350 g/L
<b>Drying times at 20°C</b> • Dustdry • Tackfree • Dry	30 mins 3 h 12 h	40 mins 5 h 14 h	40 mins 4 h 12 h	45 mins 5 h 12 h
<b>Recoatable after (brush - roller)</b>	16-24 h	16-24 h	16-24 h	16-24 h
<b>Recoatable after (spray only)</b>	30-45 mins or after 12 h	30-45 mins or after 12 h	30-45 mins or after 12 h	30-45 mins or after 12 h
<b>Max. layer thickness µm dry</b>	100	100	100	100
<b>Gloss and colour retention</b>	Good	Very good	Very good	Very good

PROTECTION MADE EASY

# Overview of our technical specifications :



	Cryltane DTS 20	Cryltane DTS 40	Cryltane DTS 60	Cryltane DTS 80
<b>Maximum dry film thickness in <math>\mu\text{m}</math></b>	100	100	100	100
<b>Stability of colour and gloss</b>	Good	Very Good	Very good	Very good
<b>Adhesion on :</b> <ul style="list-style-type: none"> <li>• Iron and steel</li> <li>• Galvanisation</li> <li>• PVC</li> <li>• Inox</li> <li>• Aluminium</li> </ul>	Very good Very good	Very good Very good	Very good Very good	Very good Very good (after sanding) Very good  Very good (after sanding)
<b>Scratch resistance</b>	Good	Very good	Very good	Very good
<b>Theoretical yield (60 <math>\mu\text{m}</math> dry)</b>	10 $\text{m}^2/\text{L}$	10 $\text{m}^2/\text{L}$	10 $\text{m}^2/\text{L}$	10 $\text{m}^2/\text{L}$

For a more detailed overview, please do not hesitate to ask our technical data sheets or test reports.

PROTECTION MADE EASY