



Self-Cleaning Filters

MODEL DELTA-STRAIN 400-RS

For Viscose and Super-Viscose Media

The DELTA-STRAIN is a logic, cost-efficient and environmental-protecting way of filtration. DELTA-STRAIN is the trade name of DELTAFILTER Filtrationssysteme GmbH.

- No cartridge filters waste
- Special design of self-cleaning without interruption of process
- Quick and easy cleaning with the **complete demountable filter unit with cleaning- and conveyance-system**
- Low operating costs due to a long service life
- Solid filter housing, in two parts, with closure of segment-screw clamps and a conical collector for the dirt
- No special spare part stockholding is necessary
- Simple and time-saving maintenance – no dismantling of pipelines
- Filter rates nominal 25 µm – 3000 µm

OPTIONS

Ex-protection ATEX-conformable acc. EU directive 94/9/EC, perforated elements for gel-like particles, fibres, algae etc., special voltage, special materials, special seals, sluices, coatings, heating jacket, TÜV-acceptance etc.

Some branches of industry for example:

Automobile industry
Chemical industry
Electronics industry
Paint and lacquer industry
Semiconductor industry
Cosmetic industry
Plastics industry
Beverages and food industry
Metalworking and steel industry
Mineral oil industry
Paper industry
Pharma industry
Water supply and wastewater treatment companies etc.



DELTA-STRAIN 400-RS,
1.4571, 10 bar

Please take care of the product description and the technical dimensions on the back ▶

Product Description

The filter housing, constructed of two parts, has a cover with motor holder and gear motor. The cover can be dismantled upwards and the closure is done by segment-screw clamps. The filter system of DELTAFILTER Filtrationssysteme GmbH is extremely robust and is designed for extreme applications. The filter element with cleaning- and conveyance-system can be dismantled as one unit without special tools. The dirt is removed from the filter element by two flexible scraper-blades of stainless steel. The conveyance-system carries the dirt in the conical collector. The main flow direction in the filter is from top to bottom. This also supports the sedimentation. The dirt in the collector can be discharged by a manual or an automatic cut-off device. An automatic purge system includes an actuator and a time controller. Liquid losses are limited. Sluices can be delivered optionally for the concentration of the dirt. The standard type of the filter housing has two dummy sheets.

Technical data

Design and calculations:	PED 97/23/EC, AD2000
Material of housing:	1.4571 (316 Ti) ^{1,2}
Material of filter element:	1.4435 (316 L), 1.4404 (316 L), 1.4571 (316 Ti)
Max. allowable pressure:	10 bar ¹
Max. allow. temperature:	80°C ¹
Housing gasket:	O-ring FPM
Filter rates nominal:	25 µm – 3000 µm ³
Weight (empty):	ca. 115 kg
Drive:	gear motor
Motor data:	400 V, 50 Hz, 180/370 W
	¹
Motor protection:	IP65
Flow capacity:	36 m³/h ¹
(for 50 µm – 100 µm in relation to clean water)	

Connections

S1 Inlet	DN80, PN16, Form C (tangential)
S2 Outlet	DN80, PN16, Form C
S3 Discharge	DN80, PN16, Form C
S4 Ventilation	R 3/8" with ball-valve and hose nipple
S5 Flushing	DN50, PN16, Form C

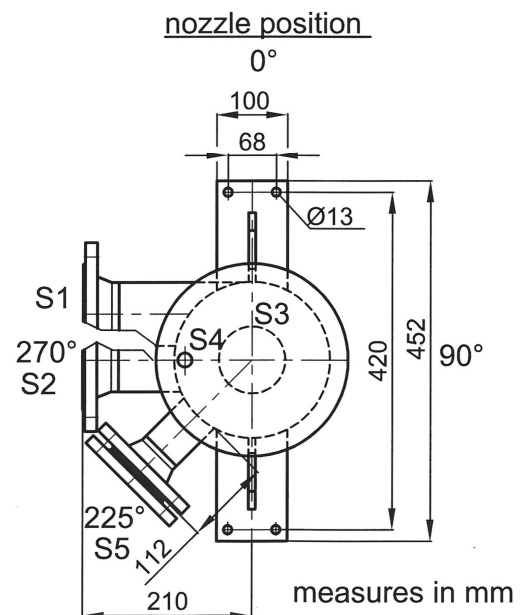
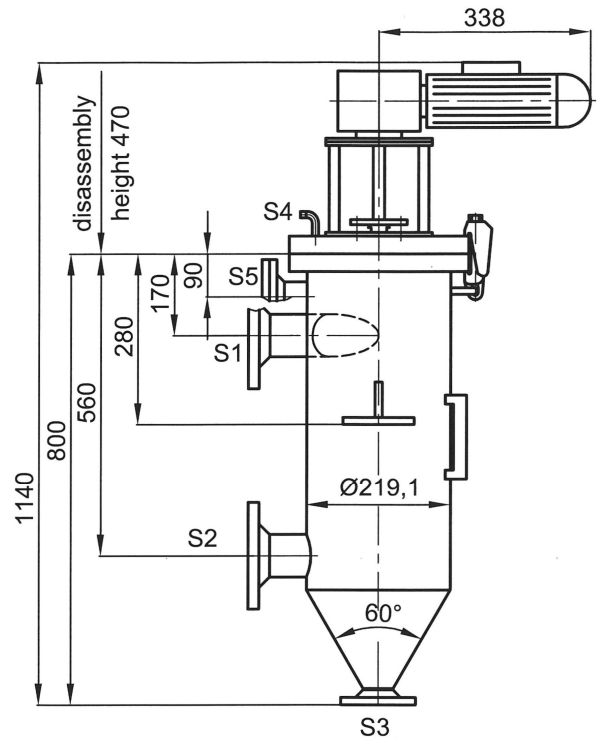
Illustration, weights and measures are only indices.

We manufacture self-cleaning filters in special construction and material! Our self-cleaning filters of range DELTA-STRAIN are available for flow capacities up to 250 m³/h as standard versions – higher flow capacities on request.

We will prepare a detailed quotation for you. Test filters are available.

02/13 - Technical changes reserved!

DELTA-STRAIN 400-RS



¹ Optional other materials, pressures, temperatures, voltages, protection ratings etc.

² Surface pickled and passivated

³ Optional perforated elements (gel-like particles, fibres, algae etc.)