

***Bag Filters
Zakkenfilters
Filtres à poches***



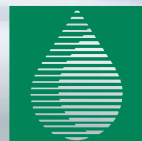
Filter-Technics bvba
A. Van Roeyenstraat 28
B-2070 Zwijndrecht Belgium

www.filter-technics.be
Info@filter-technics.be

Tel +32 3 254 05 67
Fax +32 3 254 04 95
Gsm +32 495 577 636

Tax BE 0448.510.578
Iban BE84 2200 9885 5059
Swift BIC GEBA BE BB

filter-technics



filter-technics

Filter-Technics bvba

Adrian Van Roeyenstraat 28- 2070 Zwijndrecht - Belgium

Phone : +32 32540567 - Fax : +32 32540495

info@filter-technics.be - www.filter-technics.be



FILTER BAG FEATURES

What Makes an Eaton Filter Bag Better?

State-of-the-art media ... advanced construction ... quality control ... customer service ... application specialists ... in short, the entire Eaton organization teams up to bring you the most advanced bag filtration solutions available. Eaton has applications specialists available around the world to help first-hand with difficult, demanding applications. On-site trials demonstrate the best filter bag for any new application. Expert system software makes system sizing and optimisation simple and effective. In short, commitment to our customers packs value-added quality into every product we sell.

Advanced Filter Design

Starting with unique element design and ending with an unique sealing technology, Eaton products deliver performance in simple or complex applications. Multi-layer constructions, pleated extended surfaces, fully-welded constructions and pressure-activated seals are only some of the features which make Eaton filter bags the most advanced in the world. This range of design and construction offers filtration solutions over the full spectrum of fine filtration applications.

Advanced Filtration Media

No other range of filtration products can bring the wide range of filtration media and construction to either simple or demanding applications. Progressive structure media deliver efficiency and media life not available in any other technology. High-purity media styles permit filtration without contamination of the fluid. Heat-stabilized monofilament meshes deliver absolute filtration ratings in almost any fluid. High-quality felts deliver the most cost-effective filtration available today for straightforward applications. In short, full-spectrum performance.

Proprietary Fabrication Technology

Whether sewn or welded, simple or complex, Eaton filter bags are fabricated using the most advanced techniques and equipment in the world. Highly automated welding systems produce consistent, dependable

bag construction. Eaton's proprietary UNIWELD™ system produces bag seals which are, at the same time, strong and flexible to conform to restrainer baskets. Food-grade products are fabricated in facilities where both the environment and materials are controlled to assure cleanliness. Repeatable, robust, cost-effective... technology working for our customers.

Rigorous Quality Standards

Every Eaton filter bag carries its own promise of quality to our customers. The QC tag permits full traceability of both materials and processes throughout fabrication and into service. Eaton ISO 9001 facilities produce filter bags and vessels to standards demanded by demanding industries. From the simplest sewn filter bag to the most complex multi-layer construction, the quality is the same. No compromise ... the Eaton promise to its customers.

COMPASS™ Expert System Software

Select a filter ... size and optimise a system ... search for your application. COMPASS brings over 30 years of application success to the fingertips of each Eaton Filtration Specialist. This breadth of experience is available in a customer's facility or over the phone, to provide rapid accurate estimates of system performance.



PROGAF™

The Filter Bag that Works Better Than a Filter Cartridge



The SENTINEL plastic step-ring provides a seal between the filter vessel and the PROGAF Filter Bag. As the pressure differential rises inside the vessel, the seal becomes more efficient.

PROGAF filter bags bring a new, high-performance alternative to applications requiring absolute filtration. PROGAF's progressive density depth filtration delivers high efficiency (>99.98%) and long life with all the convenient features of a bag filter. In comparison with other filtration technologies, PROGAF delivers lower operating costs while retaining the ease of change-out typical of a bag filter.

Welded Construction for Superior Performance

All PROGAF High Performance Filter Bags feature 100% welded construction for better filtration performance. This construction ensures that nothing bypasses the process media through holes in the fabric created from sewing the material. Eatons's proprietary welding technology produces a super-strong seam that stands up to the most demanding applications.

PROGAF™ Filter Bags Seal Better in Critical Applications

The SENTINEL provides a flexible, chemically-resistant seal which adapts to any filter vessel. This unique design employs a pressure-activated sealing lip which responds to increases in differential pressure. As the pressure increases, the seal of the ring improves, guaranteeing bypass-free performance over all ranges of pressure, temperature and micron rating. The elevated bag handles make removal quick and easy.

Unique Progressive Density Media Structure

PROGAF filter bags utilize an advanced media structure developed specifically to deliver both long life and absolute filtration. PROGAF's progressive density design uses up to 12 layers of media which become finer and finer as fluid passes through. The result is a gradual removal of contaminant without any single layer blinding prematurely. Application

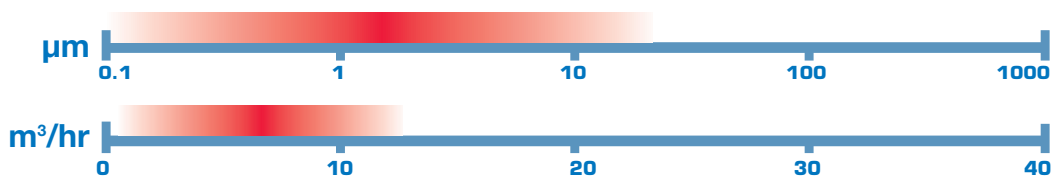


PROGAF™ Filtration Ratings

Conditions: see note 2) on page 31

Filter Model	Particle Size at Common Removal Efficiencies (µm)					ΔP (bar) Size 02 @10m³/h
	>60%	>90%	>95%	>99%	>99.9%	
PGF50	-	-	0.15	0.45	1	0.25
PGF51	>80@0.15	0.3	0.45	0.5	2	0.17
PGF55	1	3	6	10	12	0.06

ABSOLUTE



and laboratory tests confirm that PROGAF bag filters deliver longer service life and lower operating costs than any other renewable filter element. The 100% polypropylene construction provides pure, silicone-free materials³⁾ in an economic, self-contained, easily disposable filter bag.

Filtration Efficiencies Of Up To +99,98%

PROGAF High Performance Filter Bags from Eaton have performance efficiencies of over +99,98%....true absolute filtration. In many filtration applications of 1 micron and above, PROGAF Filter Bags can replace expensive cartridge filtration systems and provide better performance while saving time and money. Ask your Eaton Filtration Specialist for “real world” documented case histories, illustrating how PROGAF Filter Bags have performed in applications similar to yours.

The PROGAF™ Difference

Ordinary standard filter bags are made from needled felt media that has a fiber structure that is not as fine and precise as the filtration grade melt blown media used for PROGAF Filter Bags. The needled fibers are much larger in size and spaced much further apart, yielding a lower efficiency. PROGAF Filter Bags have been designed to deliver calibrated fractional efficiency on

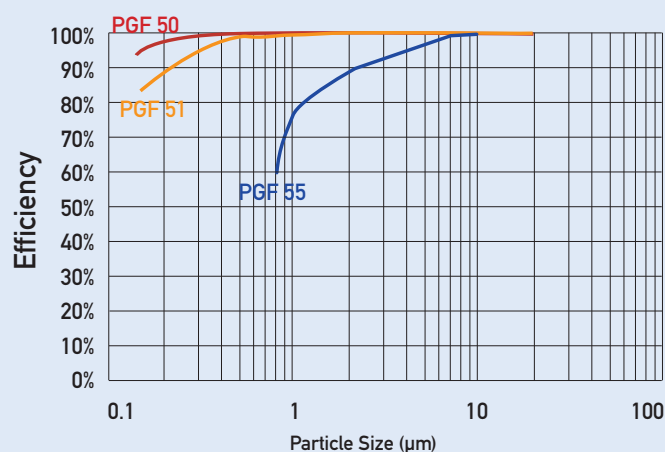
very small particles, down to less than one micron. The bags feature a completely welded construction and the unique SENTINEL Sealing Ring. And all PROGAF Filter Bags have a round bottom shape for increased pressure stability.



Unique layered construction structure

Fractional Efficiency

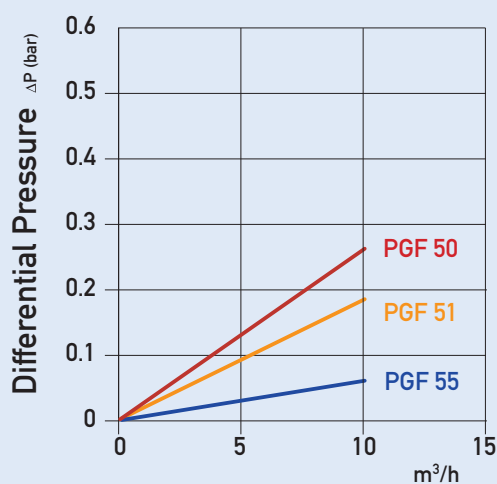
Conditions: see note 2) on page 31

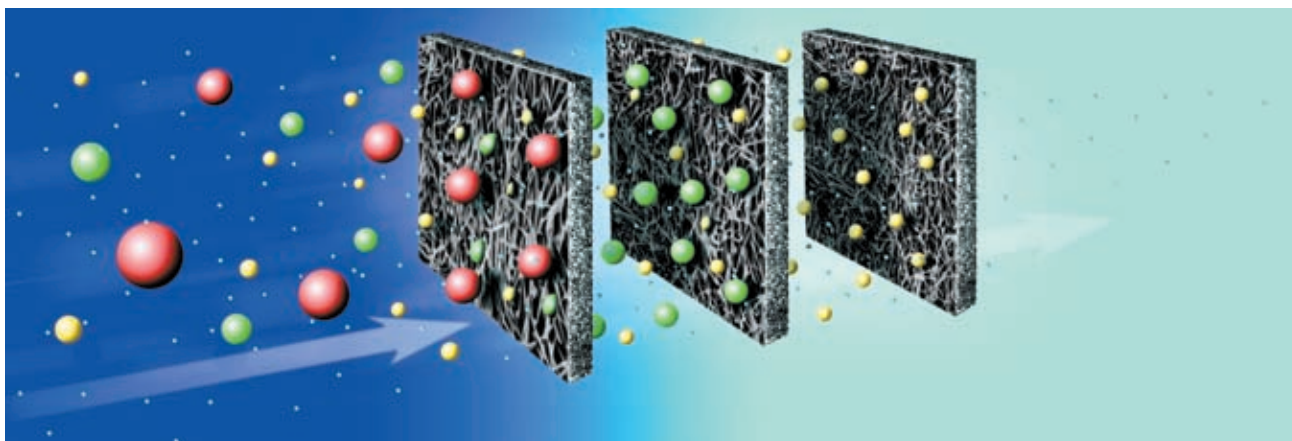


PROGAF Filter Bags are available in efficiency codes of 50, 51 and 55. To select the perfect PROGAF Filter Bag for your application, choose the micron retention efficiency level you need on the left side of the chart at particle size in microns at the bottom. Next, locate the bag efficiency code (identified by the coloured lines) that is closest to that point. There you have it: the most cost effective filter bag for your critical filtration application.

Clean ΔP

(Water at ambient conditions)





Filtration media made-up of many different layers of graded density melt-blown polypropylene. Dirt is removed progressively throughout the media, resulting in a more efficient removal mechanism.

Some Typical PROGAF™ Applications

All materials used in the construction of PROGAF Filter Bags, including the multilayer melt-blown polypropylene media, are FDA/EC listed materials that meet their requirements for food contact applications. But food or beverages are not the only applications that can take advantage of PROGAF's high filtration efficiencies and capacity retention. The pharmaceutical, micro-electronics, chemical, food, ink and paint, and water treatment industries can also use PROGAF High Performance Filter Bags.

Chemical and Pharmaceutical Industries

Demanding filtration in high-purity industries are the applications PROGAF was made for. Media capable of removal to 2 μm absolute with long service life is essential for activated carbon removal or catalyst recovery. Gel removal requires a deep matrix of fine fibers. A PROGAF bag is ideally suited for each of these applications. Available in three filtration ratings, one of the PROGAF bags will deliver just the needed performance.

Water Filtration

Water filtration applications have traditionally been dominated by cartridge filtration. Following extensive worldwide trials, PROGAF 51 has demonstrated a log 3.5 reduction of impurities in these demanding applications.

Micro-Electronics

These applications typically require chemicals that are constantly filtered to extremely low levels of particle contaminant. PROGAF's special profile, with its high efficiency media and graded density structure, provides performance characteristics superior to that of traditional cartridge type filtration. PROGAF out-performs cartridges in terms of dirt-holding capacity, service life, and cost. Membrane prefiltration significantly reduces the SDI values in water filtration.

Compare PROGAF™ to Filter Cartridges and See the Difference

The two charts on the next page graphically illustrate the advantages of PROGAF High Performance Filter Bags over different types of filter cartridges. PROGAF Filter Bags and filter cartridges come in many shapes and sizes. Compare PROGAF Filter Bags with their cartridge equivalent in material, micron rating and industry qualifications. Progressive structure of PROGAF filter bags delivers operating differential pressure which starts and remains lower during filter life than other comparable filters. The chart shown here illustrates the results of actual comparison tests made against two common styles of cartridge filters: depth-loading and pleated polypropylene. During laboratory loading tests, the PROGAF filters remained at the lowest differential pressure of any of the three over

the life, illustrating the effectiveness of the progressively structured media.

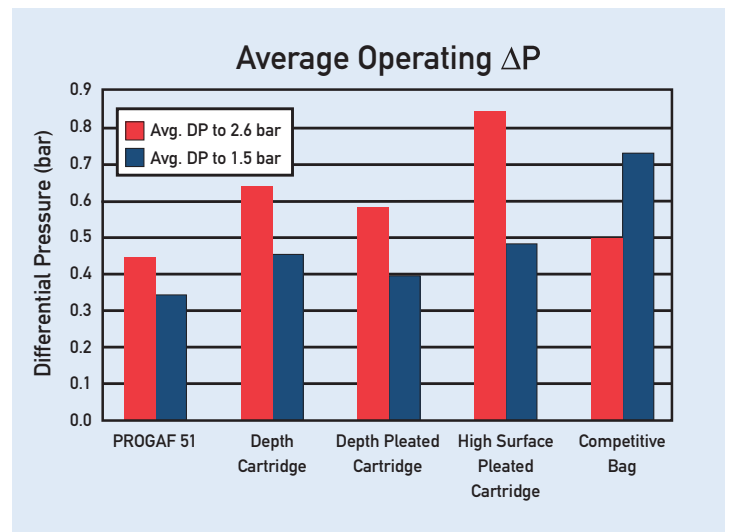
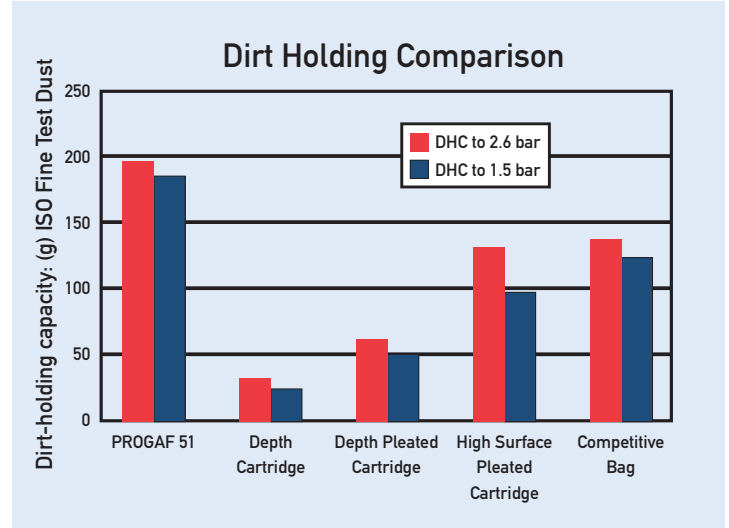
OPERATIONAL CONSIDERATIONS

Bag Positioner

To ensure proper performance, PROGAF Filter Bags must be used with the Eaton Bag Positioner. Using them together aids bag insertion into the filter vessel and assures correct alignment of the bag inside the restrainer basket, prevents the bag from being pushed out of the restrainer basket in case of reverse flow, and makes bag removal easier.

Pre-Wetting in Aqueous Solutions

PROGAF filter bags are fabricated from fine polypropylene filtration media. This material is hydrophobic, which means that water will not wet the surface of the fibers. Therefore, a fluid with lower surface tension must first be used to wet the fibers, as well as cartridge filters made from this material. Prior to installation, you must first immerse the bags for a few minutes in a wetting solution compatible with the process fluid. After the fibers are wet, water is drawn in by capillary action. Full details about how to install and pre-wet PROGAF Filter Bags are provided in the installation instructions.



PRODUCT CODES



ACCUGAF™

ACCUGAF™, Filter Bags for Applications Demanding Efficiency >99%

The ACCUGAF filter bag from Eaton pushes the boundaries of bag filtration technology far beyond traditional designs. With efficiencies >99%, each ACCUGAF model provides cost-effective filtration solutions for demanding applications. The five models assure users that particles from the range of 1-25 microns can be removed effectively while delivering long service life.

High-Efficiency Performance

ACCUGAF filter bags feature:

- 100% welded seams
- Eaton unique SENTINEL seal ring
- Meltblown filtration media in polypropylene or polyester
- No additives, such as resins, binders or surface treatments

FDA/EC-Compliant Materials*

ACCUGAF Polypropylene filter bags are constructed entirely of materials compliant to FDA requirements for materials in contact with food. All materials conform to US Code of Federal Regulations 21 CFR Part 177 as well as to the EC Regulation 1935/2004 and Directive 2002/72/EC.

*Polypropylene only (AGF)

Applications

Although ideally suited for food and beverages, ACCUGAF filter bags will deliver equal performance in a wide range of demanding applications such as:

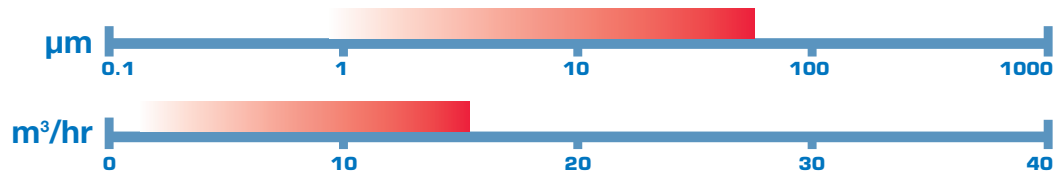
- Beer, wine, spirits and beverage filtration
- Fine particle removal in parts cleaning
- Final filtration of lacquers
- Final filtration of vinegar
- Activated carbon removal in process systems
- Final filtration of hydraulic oils and lubricants

ACCUGAF Filtration Ratings

Conditions: see note 2) on page 31

Material	Filter Model	Particle Size at Common Removal Efficiencies (µm)					ΔP (bar) Size 02 @10m ³ /hr	Max Op. Temp (°C)
		>60%	>90%	>95%	>99%	>99.9%		
Polypropylene	AGF 51	0.2	0.6	0.8	1.5	5	0.09	90
	AGF 53	0.8	1	2	3	5	0.22	90
	AGF 55	1	2	3	5	15	0.05	90
	AGF 57	2	4	5	10	25	0.04	90
	AGF 59	10	20	22	25	35	0.03	90
Polyester	AGFE 51	0.2	0.6	0.8	1.5	5	0.09	150
	AGFE 55	1	2	3	5	15	0.05	150
	AGFE 57	2	4	5	10	25	0.04	150

ABSOLUTE



OPERATIONAL CONSIDERATIONS

Bag Positioner

ACCUGAF filter bags must be used with the Eaton bag positioner. This eases insertion and assures correct alignment of the filter bag inside the restrainer basket. In addition, the filter bag will be protected against damage to inadvertent back-flow.

Pre-Wetting in Aqueous Solutions

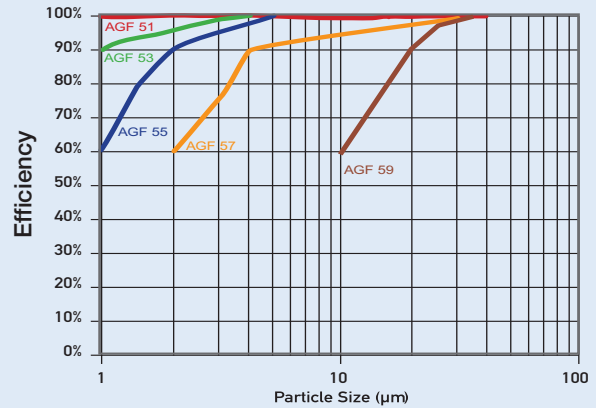
ACCUGAF polypropylene filter bags are fabricated from microfiber filtration media. These materials are hydrophobic, indicating that water will not wet the fiber surfaces. As with all other fine polypropylene filters, a lower surface tension fluid (wetting agent) must be used to wet the media prior to introducing water. Prior to service, the filter bags must be immersed in a wetting solution compatible with the process fluid. After wetting, an aqueous fluid will be drawn into the media through capillary action. Full details about installation and wetting are provided with every box of ACCUGAF filter bags.

AGFE polyester version

- for use in higher temperature application
- no need for pre-wetting in aqueous solutions

Fractional Efficiency

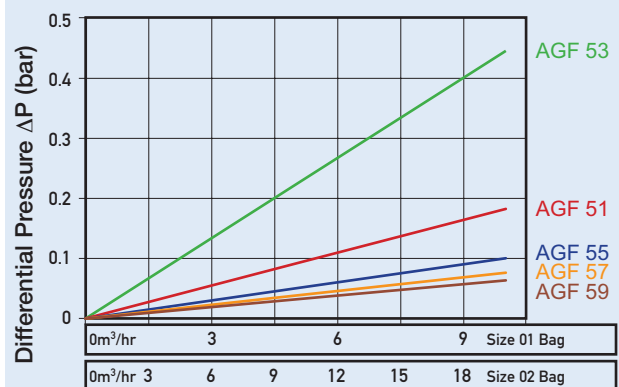
Conditions: see note 2) on page 31



ACCUGAF Filter Bags, are available in retention codes of 51, 53, 55, 57, and 59. To select the perfect ACCUGAF Filter Bag for your application use the chart and choose the retention efficiency level you need on the left side of the chart at particle size in microns at the bottom. Next find which bag efficiency code (identified by the coloured lines) is closest to that point. There you have it, the most cost effective filter bag for your critical filtration application.

Clean ΔP

(Water at ambient conditions)



PRODUCT CODES

ACCUGAF™ AGF: Polypropylene melt-blown AGFE: Polyester melt-blown		E: Polypropylene Mesh R: Polyester Mesh		E: PP SENTINEL® Ring H: Polyester SENTINEL® Ring		Bags/Box 10/15	Box Size M/L																					
AGF Bag Material	53 Micron Rating	E Bag Cover Layer	02 Bag Size	E Collar/Ring Type	0 Bottom Shape	10M Packaging																						
<table><tr><td>AGF</td><td>AGFE</td></tr><tr><td>51</td><td>51</td></tr><tr><td>53</td><td>-</td></tr><tr><td>55</td><td>55</td></tr><tr><td>57</td><td>57</td></tr><tr><td>59</td><td>-</td></tr></table>		AGF	AGFE	51	51	53	-	55	55	57	57	59	-	<table><tr><td>Code</td><td>Size</td><td>Area</td></tr><tr><td>01</td><td>ø 180 mm x 435 mm L</td><td>0.24m²</td></tr><tr><td>02</td><td>ø 180 mm x 810 mm L</td><td>0.48m²</td></tr></table>		Code	Size	Area	01	ø 180 mm x 435 mm L	0.24m²	02	ø 180 mm x 810 mm L	0.48m²	<table><tr><td>round bottom</td></tr></table>			round bottom
AGF	AGFE																											
51	51																											
53	-																											
55	55																											
57	57																											
59	-																											
Code	Size	Area																										
01	ø 180 mm x 435 mm L	0.24m²																										
02	ø 180 mm x 810 mm L	0.48m²																										
round bottom																												

LOFCLEAR™

Cost Effective Filter Bags for Absolute Filtration Applications

LOFCLEAR filter bags now make absolute filtration viable in many applications where only standard bags could be used due to cost constraints. Made from 100% pure polypropylene materials, LOFCLEAR filter bags contain no lubricants. In addition, their excellent oil adsorbancy makes LOFCLEAR filter bags ideally suited to the oil removal needs of the paint and coatings industries.

Two Series to Match Filters to Applications

LOFCLEAR filter bags are available in two styles, Series 100 and Series 500. These two styles make it possible to match the requirements of a wide range of applications, depending on the needs for efficiency and long life. The Series 100 filters use a multi-layer construction for applications where high efficiency is of prime importance. The Series 500 filters utilize a unique pleated construction to increase surface area for applications requiring high dirt capacities and long life.

Perfect for Removal of Gelatinous Materials

LOFCLEAR filter bags have proven to be highly effective in the removal of gelatinous contaminants. The combination of deep microfiber filtration media breaks up gels and



retains them within the media depth. These features prevent surface blockage and breakthrough typical of standard filter bag materials.

LOFCLEAR™ Series 100 Filter Bags

LOFCLEAR Series 100 Filter Bags feature a proven three-layer construction with a sewn filter welded to the Eaton SENTINEL seal. They feature efficiencies >99% over a wide range of particle sizes, with dirt capacities up to 250 g. The eight models feature:

- Polypropylene prefilter
- Meltblown polypropylene microfiber final filter
- Polypropylene outer migration barrier

LOFCLEAR Series 100 filter bags are an excellent choice for application such as high-purity fluids with low particulate concentration, first-pass guard filtration, oil adsorption and activated carbon removal.

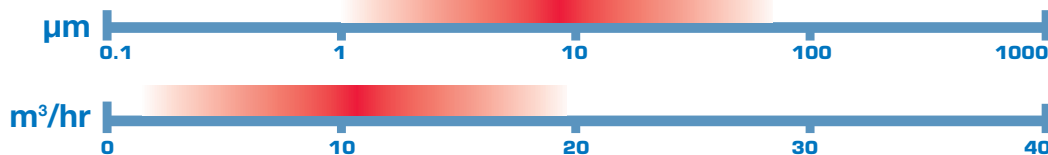
The LOFCLEAR 128 and 129 were especially developed for the filtration of electro-coatings in the automotive industry. The filtration design allows pigments to pass through the filtration layers, while retaining impurities and removing silicones and other crater-forming substances. The LOFCLEAR 130 filter bag adds extra adsorption capacity for retaining high amounts of oils or other crater-forming substances. The LOFCLEAR 135 delivers high removal of particulate and oils for clearcoat applications where pigment removal is not an issue.

LOFCLEAR™ Filtration Ratings

Conditions: see note 2) on page 31

Filter Model	Particle Size at Common Removal Efficiencies (µm)				ΔP (bar) Size 02 @10m³/hr
	>60%	>90%	>95%	>99%	
113/123	0.5	1	2	4	0.025
114/124	0.75	2	3	5	0.02
115/125	1.5	3.5	8	10	0.01
116/126	2	6	13	15	<0.01
118/128	25	35	37	40	<0.01
119/129	15	25	27	30	<0.01
130	6	14	15	20	0.05
135	1	6	8	10	0.02
522	0.5	1	1.5	2.6	0.13
525	1	2	3.5	6	0.08
527	2	5	9	13	0.008
529	10	20	23	32	<0.005

ABSOLUTE



LOFCLEAR™ Series 500 Filter Bags

LOFCLEAR Series 500 Filter Bags have an all-welded multi-pleated construction for high efficiency and long life. This series of bags has a pleated prefiltration layer and a complex design of final filtration layers, allowing the removal of difficult-to-filter gels and deformable particles with a high capacity of solids loading. The outer web covering eliminates any downstream fiber migration.



LOFCLEAR Series 500 Filter Bags are available in four different efficiency ratings so you can choose your exact required filtration efficiency. LOFCLEAR Filter Bags have filtration efficiencies from 95 to 99%, with a dirt-holding capacity of over 1000g.



A pleated prefilter provides a very large surface (about 3m²) to collect gels and solids before it reaches the final filter layers.

Among the many applications for LOFCLEAR Series 500 Filter Bags are oils, slurries, dilute oil removal, re-circulating batch systems, and systems with heavy contamination.

OPERATIONAL CONSIDERATIONS

Bag Positioner

LOFCLEAR Series 500 filter bags must be used with the Eaton bag positioner. This eases insertion and assures correct alignment of the filter bag inside the restrainer basket. In addition, the filter bag will be protected against damage to inadvertent back-flow.

PRODUCT CODES 100 series

LOFCLEAR™		T-Spun-bond Cover	E-Polypropylene SENTINEL® Ring	
LCR	123	T	02	25L
Bag Material	Micron Rating	Bag Cover Layer	Bag Size	Collar/Ring Type
	LOFCLEAR™ Range		Code	Bags/Box
	113 123 130		01 ø 180 x 435 mm L	25-50
	114 124 135		02 ø 180 x 810 mm L	Box Size
	115 125			L
	116 126			
	118 128			
	119 129			

PRODUCT CODES 500 series

LOFCLEAR™		T-Spun-bond Cover	Z-Santoprene® SENTINEL® Ring	
LCR	522	T	02	04X
Bag Material	Micron Rating	Bag Cover Layer	Bag Size	Collar/Ring Type
	LOFCLEAR™ Range		Code	Bags/Box
	522 527		02 ø 180 x 795 mm L	4
	525 529			Box Size
				X

DURAGAF™

Extended Life Filter Bags Can Improve Your Filtration Process and Save You Money

DURAGAF™ for High Performance

Extended Life Filter Bags Designed to Save You Money
DURAGAF filter bags represent the state-of-the-art in needled felt bag filter media. Their unique structure delivers equal filtration performance with lifetimes 2-5 times longer than ordinary felt media. The result is reduced operating costs due lower bag consumption, downtime, change-out labor, storage and disposal.

Why DURAGAF Filter Bags Last Longer

DURAGAF filter bags are available in two extended life materials: polypropylene (code POXL) or polyester (code PEXL). These two materials utilize a fiber blend with a finer fiber diameter and a higher weight than ordinary media. The result is a dramatically higher dirt holding capacity at the same efficiency and differential pressure. Processes run longer and need fewer bag changes with DURAGAF filter bags.

All-Welded Construction for Superior Performance

All DURAGAF filter bags feature 100% welded fabrication and the Eaton SENTINEL seal. This construction eliminates the bypass which can occur in standard sewn filter bags. Eaton proprietary welding technology produces a super-strong seam that will stand up to even the most demanding applications without failure.

DURAGAF Filter Bags Seal Better in Critical Applications

The unique SENTINEL seal is standard on all DURAGAF filter bags. The unique, pressure-actuated ring actually improves its seal as differential pressure increases.

No Downstream Fiber Contamination

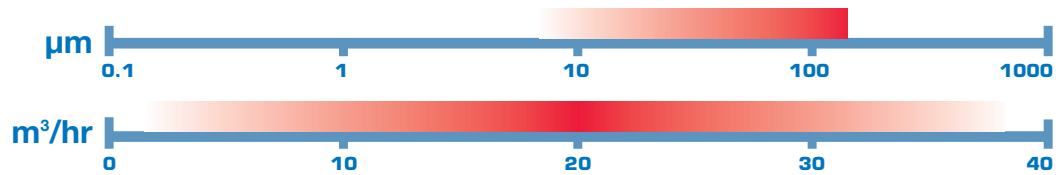
All DURAGAF filter bags are manufactured with a proprietary downstream surface treatment to prevent fiber migration. A special finish is obtained by glazing the surface, melting fibers together to form a tight, secure downstream matrix. In addition, the weld seams are heat bonded to eliminate loose fibers which might result during fabrication.

Food and Beverage Applications

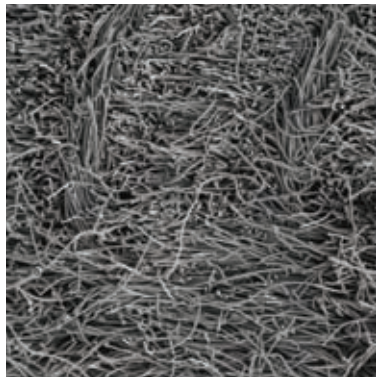
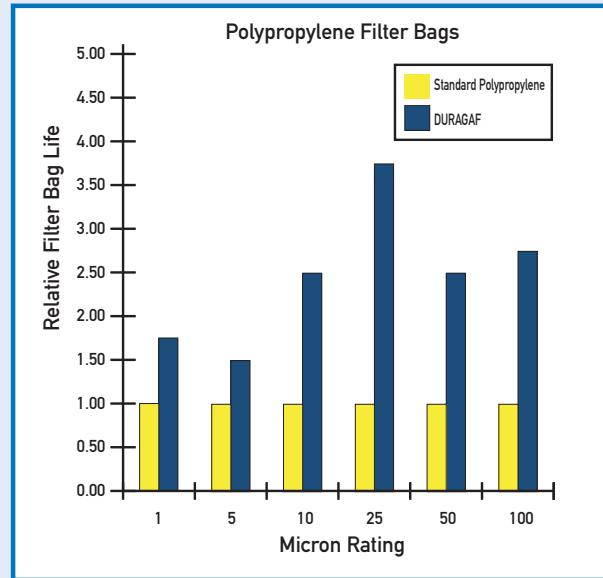
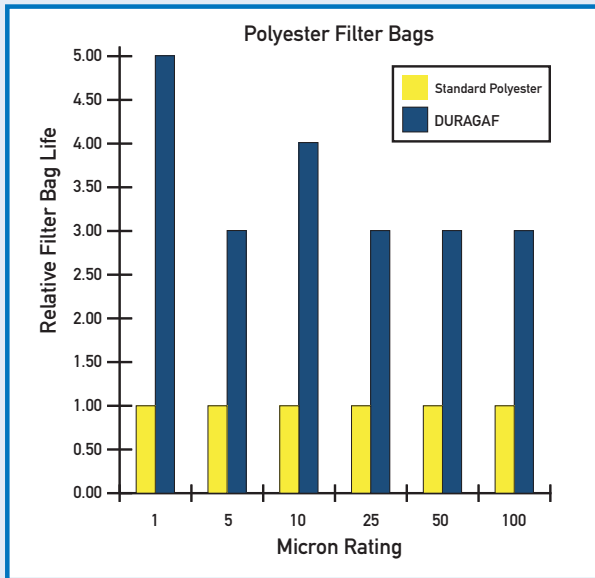
DURAGAF filter bags are available in models (POXL, PEXL) which are compliant with FDA and EC requirements for food contact.



NOMINAL

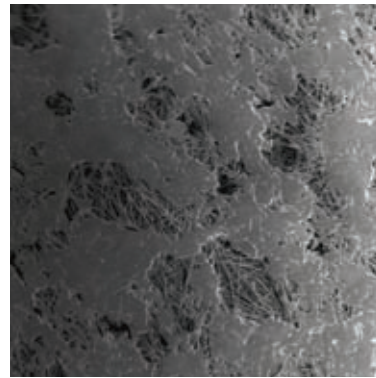


How much longer will a DURAGAF™ Filter Bag last in your application?



Extended Life Felt

finer fibers
more pores
thicker media



Surface of Extended Life Felt

no fiber release
full flow through surface channels

PRODUCT CODES

DURAGAF™
POXL: Polypropylene
PEXL: Polyester
POXLF: Polypropylene Food Grade
PEXLf: Polyester Food Grade

POXL
Bag Material

50
Micron Rating μm

P: Plain

P
Bag Cover Layer

POXL/PEXL	PEXLf	POXLf
1 5	1 5	5
10 25	5 10	10
50 100	10 25	50

E: Polypropylene SENTINEL Ring, Welded (POXL)/(POXLf)
H: Polyester SENTINEL Ring, Welded (PEXL)/(PEXLf)

01
Bag Size

E
Collar/Ring Type

30L
Packaging

Code	Size
01	ø 180 x 430 mm
02	ø 180 x 810 mm

Bags/Box	Box Size (mm)
30	L

CLEARGAF™



CLEARGAF™ Fully Compliant and Approved for Food and Beverage Service

CLEARGAF™ Features Deliver Advanced Benefits

- Compliant materials assure compatibility with all food applications. Sewn bags use special lubricant-free thread
- Independent verification guarantees conformity to EC and FDA requirements
- Low-migration media minimizes substances introduced to fluids
- SENTINEL® Ring Bag Seals eliminate fluid bypass
- All-welded construction eliminates fluid bypass through needle holes on felt and multi-layer filter bags
- Controlled production eliminates contamination from handling and environmental conditions
- Single packaging keeps bags free from contamination during shipping, storage and installation
- Special handling & storage ensures that there is no contamination after packaging

CLEARGAF is the series of filter bags specifically designed for the requirements of the food, beverage and pharmaceutical industries. Comprised of several filter styles, CLEARGAF delivers:

- FDA compliant materials per 21CFR177
- EC compliant per 1935/2004
- EC compliant per 2002/72/EC
- Independent testing and certification
- Special single packaging and warehouse control

CLEARGAF™ Filter Bags for Direct Contact with Foodstuffs

Filter Bags are widely used for the filtration of fluids that are directly or indirectly used as foodstuffs. In most applications, these types of filters must be carefully selected to ensure that foodstuffs are not contaminated from their use. Most materials used to manufacture disposable filters, including bag filters and cartridge filters, are polymers, which are generally selected for their purity in the application. Many of these materials, however, contain materials that can diffuse out of the plastic into the process fluid. This effect, known as migration, can lead to foodstuff contamination. For this reason, the use of polymers is often limited to products such as CLEARGAF Filter Bags, which are made from materials that have been documented as safe in food applications. CLEARGAF Filter Bags conform to both US FDA and European EC regulations. The difference between the FDA and EC regulations is one of degree. FDA regulation

limits on migration are proportional to weight. EC limits, however, are based on area, and must be demonstrated in tests on finished articles. For heavy material, the EC limits can be up to 50 times more restrictive than the FDA ones.

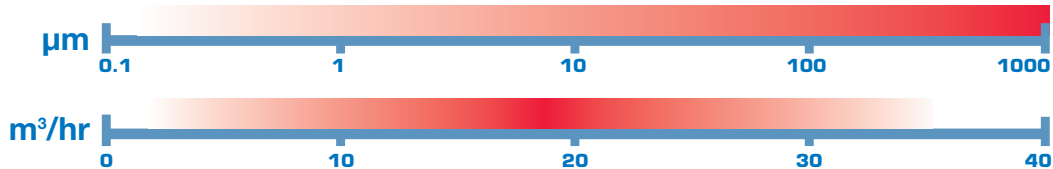
Independent Verification

You can be sure all CLEARGAF Filter Bags meet these requirements, because they have been evaluated, tested and certified for EC migration performance by an independent food research institute. CLEARGAF Filter Bags are also made from materials listed in the US Code of Federal Regulations Title 21 Part 177. No other materials are added during fabrication.

Special Manufacturing and Packaging

CLEARGAF Filter Bags are manufactured under special conditions to ensure that they contain no contamination. Immediately after manufacture, each bag is individually sealed in protective plastic packaging to keep them contamination-free. Eaton has special warehousing facilities for CLEARGAF Filter Bags to further protect them during storage. No other manufacturer goes to these lengths to ensure the quality of their food grade filter bags.

ABSOLUTE / NOMINAL



Selection Chart

	Max.Temp (°C)	Sizes		Available Grades													Ring Style
		01	02	1	5	10	25	50	80	100	150	200	250	400	600	800	
PEF*	140																H
PEXLF*	140																H
POF*	90																E
POXLF*	90																E
NMOF	140																H
AGF*	90																E
PGF*	90																E

*Products subject to MPQ in Europe applications. See Technical Bulletin TB990801 for full details.

PRODUCT CODES

PEF: polyester needlefelt
 PEXLF: extended life polyester needlefelt
 POF: polypropylene needlefelt
 POXLF: extended life polypropylene needlefelt
 NMOF: nylon monofilament
 AGF: polypropylene meltblown
 PGF: polypropylene meltblown

CLEARGAF™

PEF
Bag Material

25
Micron Rating µm

CLEARGAF Range
1, 5, 10,
25, 50, etc.

P
Bag Cover Layer

E: Extruded mesh (for AGF, PGF)
P: Plain (no cover)

01
Bag Size

H
Collar/Ring Type

40L
Packaging

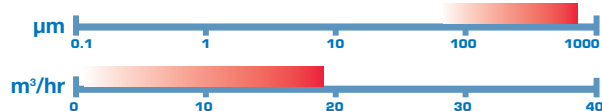
E: PO SENTINEL® Ring
H: PE SENTINEL® Ring

Code
01
02

Size
ø 180 mm x 430 mm L
ø 180 mm x 810 mm L

BANDSEAL™

NOMINAL



For simple, minimal-pressure non-critical open filtration applications (that is, filtration without a vessel), Eaton's line of BANDSEAL Filter Bags offers many

cost-effective choices. These filter bags are available with a drawstring that permits them to be installed directly on the end of a pipe, without the need of an adapter.



PRODUCT CODES

BANDSEAL™
NMO: Nylon Monofilament

NMO
Bag Material

100
Micron Rating µm

BANDSEAL Range
25-800

P: Plain

P
Bag Cover Layer

R: without ring

01
Bag Size

R
Collar/Ring Type

R
Options

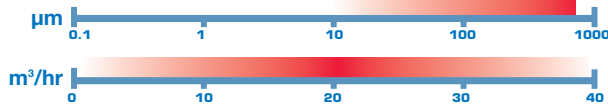
50S
Packaging

Code
01
43
45

Size
ø 180 mm x 430 mm L
width 140 mm x 300 mm L
width 140 mm x 500 mm L

R: tie on band
none: without band

NOMINAL



SENTINEL®

Welded Construction Filter Bags



Now, applications requiring polypropylene or polyester felt filter bags can take advantage of the all-welded construction afforded by Eaton SENTINEL® Filter Bags. These bags feature super-strong welded construction rather than sewn seams. This construction ensures that nothing bypasses the process media through holes in sewn fabric.

Welded Construction Filter Bags

SENTINEL filter bags from Eaton represent the industry standard in bypass-free filter construction. Available in polyester and polypropylene materials, all SENTINEL filter bags feature:

- SENTINEL Pressure Actuated Seal Ring
- Super Strong Welded Construction
- Special surface finish strongly reduces fiber release

Proprietary Construction

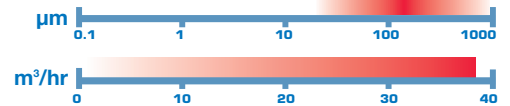
Eaton's proprietary construction processes produce a reliable, durable filter bag. All seams are fully welded, producing strong, reliable joints with no by-pass or loose sewing thread. Seams are both strong and flexible, allowing the filter bag to form to the restrainer basket. The seam edges are heat sealed, eliminating possible loose fibers. This results in a filter bag with durable performance for the most demanding applications.

SENTINEL® Seal Ring

All Eaton SENTINEL filter bags utilize the unique SENTINEL seal. Its all-plastic construction provides a flexible, chemically resistant seal which adapts to any filter vessel. This unique design employs a pressure activated sealing lip which responds to increases in differential pressure. As the pressure increases, the seal of the ring improves, insuring by-pass free performance over all ranges of pressure, temperature and micron rating. The elevated bag handles make removal of the bag from the vessel quick and easy. When a SENTINEL filter bag is installed into a Eaton filter vessel, the ring snaps into place, holding its position until the vessel is closed.

PRODUCT CODES

PO: Polypropylene Needlefelt PE: Polyester Needlefelt NMO: Nylon, monofil mesh	P: Plain	E: Polypropylene SENTINEL® Ring, welded H: Polyester SENTINEL® Ring, welded Z: Santoprene SENTINEL® Ring, sewn	Bags/Box Box Size S, M, L										
PO Bag Material	25 Micron Rating µm	P Bag Cover Layer	02 Bag Size										
<table border="1"> <tr> <th colspan="2">SENTINEL® Range</th> </tr> <tr> <td>1</td> <td>25 200</td> </tr> <tr> <td>5</td> <td>50 ...</td> </tr> <tr> <td>10</td> <td>100 1250</td> </tr> </table>		SENTINEL® Range		1	25 200	5	50 ...	10	100 1250	E Collar/Ring Type	30L Packaging		
SENTINEL® Range													
1	25 200												
5	50 ...												
10	100 1250												
		<table border="1"> <tr> <th>Code</th> <th>Size</th> </tr> <tr> <td>01</td> <td>ø 180 mm x 430 mm L</td> </tr> <tr> <td>02</td> <td>ø 180 mm x 810 mm L</td> </tr> <tr> <td>03</td> <td>ø 100 mm x 230 mm L</td> </tr> <tr> <td>04</td> <td>ø 100 mm x 380 mm L</td> </tr> </table>	Code	Size	01	ø 180 mm x 430 mm L	02	ø 180 mm x 810 mm L	03	ø 100 mm x 230 mm L	04	ø 100 mm x 380 mm L	Options
Code	Size												
01	ø 180 mm x 430 mm L												
02	ø 180 mm x 810 mm L												
03	ø 100 mm x 230 mm L												
04	ø 100 mm x 380 mm L												



Sewn Construction Filter Bags

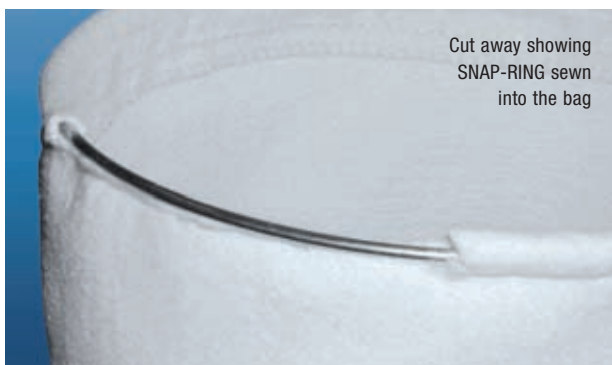
For over 30 years, Eaton SNAP-RING® filter bags have been critical components of filtration systems world-wide. The wide range of media materials, affordable price, and reliability of construction have made them the ideal choice for applications in nearly all process industries.

Superior, Consistent Quality

SNAP-RING filter bags are manufactured to the highest standards of fabrication available. Materials must satisfy stringent specifications for filtration performance and media purity. Production under ISO 9001 quality systems results in order to order, year to year, reliability and repeatability.

Adaptable to All Vessels

SNAP-RING filter bags are designed and constructed to fit the widest range of filter vessels, whether from Eaton or from another supplier. Special geometries are available to fit most non-standard vessels. No matter what the vessel, there is an Eaton SNAP-RING bag to fit it.



Cut away showing
SNAP-RING sewn
into the bag

Application Versatility

SNAP-RING filter bags are available with several ring materials, six different media materials and eleven micron ratings. SNAP-RING filter bags can handle corrosive chemicals, aggressive solvents and even elevated temperatures. With this many choices, the right Eaton filter bag is available for every application.

PRODUCT CODES

Needlefelt
PE: Polyester
PO: Polypropylene
NY: Nylon

Monofilament Mesh
NMO: Nylon
PMO: Polypropylene

Multifilament Mesh
PEMU: Polyester

HT: Meta-Aramid
PT: PTFE
W: Wool

PEMO: Polyester
PTMO: ETFE
PVMO: PVDF

SNAP-RING®		P: Plain		A: Stainless Steel SNAP-RING® S: Carbon Steel SNAP-RING®, Zinc Plated		Bags/Box Box Size S, M, L																						
PO Bag Material	25 Micron Rating µm	P Bag Cover Layer	02 Bag Size	S Collar/Ring Type	Options	30L Packaging																						
<table border="1"> <thead> <tr> <th colspan="3">SNAP-RING® Range</th> </tr> </thead> <tbody> <tr> <td>1</td> <td>25</td> <td>200</td> </tr> <tr> <td>5</td> <td>50</td> <td>...</td> </tr> <tr> <td>10</td> <td>100</td> <td>1250</td> </tr> </tbody> </table>		SNAP-RING® Range			1	25	200	5	50	...	10	100	1250	<table border="1"> <thead> <tr> <th>Code</th> <th>Size</th> </tr> </thead> <tbody> <tr> <td>01</td> <td>ø 180mm x 430mm L</td> </tr> <tr> <td>02</td> <td>ø 180mm x 810mm L</td> </tr> <tr> <td>03</td> <td>ø 100mm x 230mm L</td> </tr> <tr> <td>04</td> <td>ø 100mm x 380mm L</td> </tr> </tbody> </table>		Code	Size	01	ø 180mm x 430mm L	02	ø 180mm x 810mm L	03	ø 100mm x 230mm L	04	ø 100mm x 380mm L			
SNAP-RING® Range																												
1	25	200																										
5	50	...																										
10	100	1250																										
Code	Size																											
01	ø 180mm x 430mm L																											
02	ø 180mm x 810mm L																											
03	ø 100mm x 230mm L																											
04	ø 100mm x 380mm L																											

HAYFLOW™

Eaton's Revolutionary New Filter Element



The handles on the SENTINEL ring and the centre sleeve allow for easy extraction of the HAYFLOW element.

HAYFLOW™ – The Next Generation of Filtration Systems

With this new, unique pending filter element Eaton technology has combined the best of both bag and cartridge filters into one single filtration element for outstanding filtration performance. Because HAYFLOW's surface area is up to 65% greater than a similar size filter bag, existing systems that use HAYFLOW experience longer filter element life and less changing, resulting in reduced running costs. With HAYFLOW, designers of new bag filtration systems can opt for reduced running costs or, because of the high flow rates possible with HAYFLOW, reduce filter vessel size by up to 50% thus lowering the initial cost of the system.

What Makes the HAYFLOW™ Element Better

The heart of Eaton's HAYFLOW filter element is two concentric cylinders of high-quality extended life Eaton filter media. These cylinders are formed using unique welding technology to create a no by-pass seam. The diameter of the cylinder is the same size as a standard filter bag, so retrofitting into existing systems is easy. The HAYFLOW element is fitted with Eaton's unique SENTINEL® sealing ring, ensuring a positive seal with the filter vessel to protect against bypass of the process media.

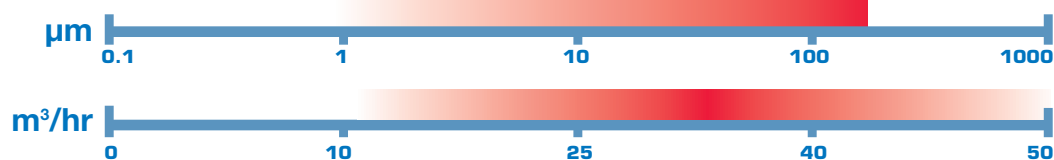
How the HAYFLOW™ Element Works

The process fluid enters the inside of the element, passes through it, and exits through the vessel outlet. Like a filter bag, the filtered-out material stays inside the HAYFLOW element. The HAYFLOW element is unlike a filter cartridge, where the residue of the filtered material remains on the outside of the cartridge, complicating the changing process.

An All-Around Better Choice

Changing a HAYFLOW filter element can actually be easier than changing a filter bag, because HAYFLOW's revolutionary design only retains 25% of the residual liquid volume of a similarly sized filter bag. When you need to change the element, it weighs up to 75% less than a filter bag. A full bag can weigh up to 15 kg, so weight is an important

NOMINAL RATED



Easy installation
of HAYFLOW
into existing bag
filter housings



The Choice is Yours

Eaton's HAYFLOW filter element can be adapted to a wide range of applications through the use of different filter media. Basically, any weldable filtration media can be used to construct a HAYFLOW element. Multilayered construction is also possible for applications that require it. Using melt-blown polypropylene media, HAYFLOW elements are available with high micron retention ratings, and with selective absorption characteristics as well. Standard HAYFLOW filter elements are available in both polypropylene and polyester construction. These two materials are very versatile and will perform in a majority of applications over a wide range of temperatures. Eaton uses a high-quality, extended life DURAGAF™ needlefelt media with extremely fine fibers and higher pore volumes for superior performance. Both feature either polypropylene or polyester SENTINEL sealing rings.

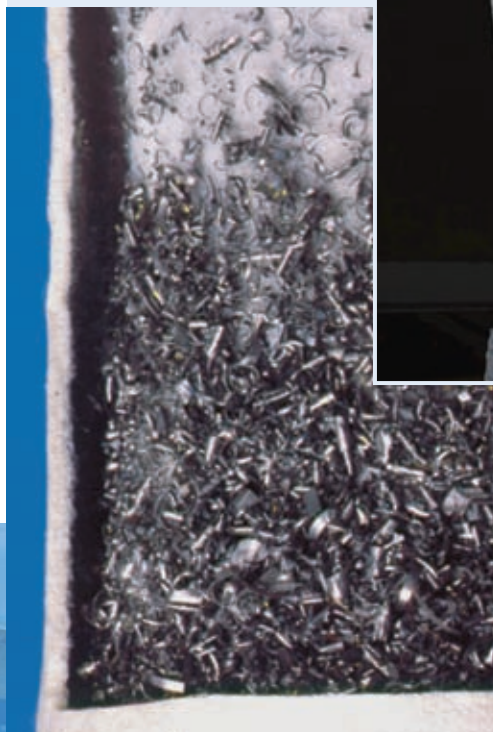
consideration for the system operator. HAYFLOW's cylindrical construction offers strength unrivaled in other similar products. The all welded filter element is fit to a matching restrainer basket, allowing the filtration media to be replaced easily and quickly. The close-tolerance fit of the filter and the restrainer basket provide ease of installation and worry-free performance. This combination of fully-welded seams and a rigid, cylindrical geometry provides strength over a full range of operating differential pressure. The HAYFLOW element is always smooth and fits to the basket walls without crimps or pleats, guaranteeing a quick and easy installation. Batch system operators often do not want to stop a batch process and change a filter bag. Using HAYFLOW, system operators have found up to 5 times the life over a similar size filter bag and experienced reduced operating costs.

Usually, bag filters are bigger than cartridge filters but are easier to handle and more cost effective. HAYFLOW brings the best of both systems together...high flow rates in compact vessels, or a longer lifetime and extended changing cycles. HAYFLOW combines highly efficient filter media, enlarged surface area, better dirt-holding capabilities and a reduction of the residual liquid volume retained in the element. All of these advantages result in superior filtration performance.

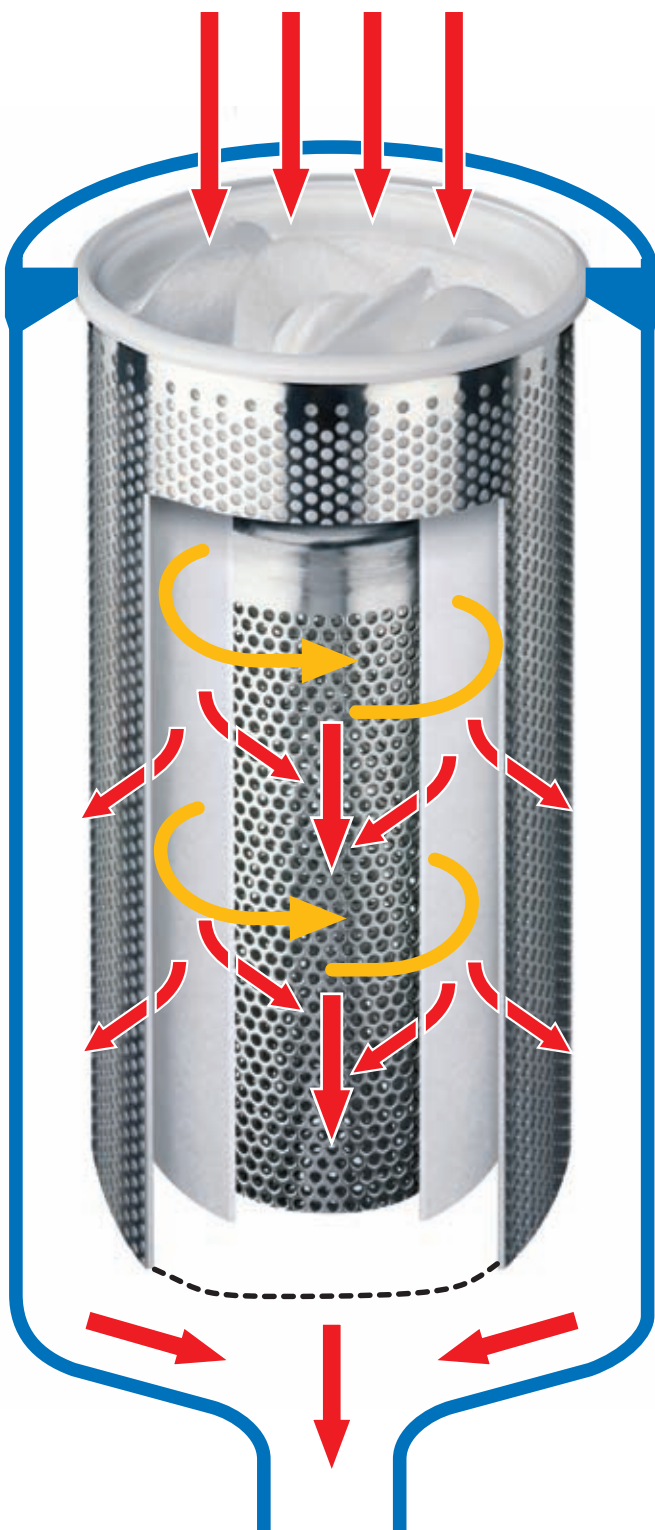
Cut open element from
an E-coat tank filtration
after being in service
for eleven weeks



Metal fines collected
from parts washer



The HAYFLOW Effect



Features:

- Higher flow rates - smaller, less costly vessels can be used
- Up to five times greater life over filter bags
- Liquid losses are 25% of similar size filter bag
- SENTINEL sealing ring and 100% welded construction for no by-pass
- Up to 35 times more effective than standard filter cartridges
- Low differential pressure results in less energy consumption of pumps
- Very cost-effective in comparison to similar systems
- Rugged cylindrical construction
- Easier maintenance with reduced costs
- Easy retro fit to existing filter vessels

And....Eaton's superior support, before, during and after system installation.

Take Advantage of HAYFLOW™ Now

You can easily change over from ordinary bag filtration to the revolutionary new HAYFLOW filter element. Existing bag filter vessels need only to be fitted with a new HAYFLOW restrainer basket for instant compatibility with the HAYFLOW element. No modification to the vessel is required. Just drop in the new basket, and you are ready to take advantage of all the benefits offered by a HAYFLOW filtration system.

Still Not Sure if HAYFLOW™ is Right for You?

Contact us. We can show you how you can save money and improve your filtration process using HAYFLOW filter elements.

Application:

- ✓ Automotive
- ✓ Sugar Processing
- ✓ Paints, Coatings, Inks, Dispersions
- ✓ Resins
- ✓ Water and Waste Water Treatment
- ✓ Solvents
- ✓ Lubricants and Metalworking Fluids
- ✓ Aqueous and Solvent Based Cleaners in Parts Washing Equipment
- ✓ Pulp and Paper
- ✓ Oil and Gas Exploration and Processing
- ✓ Pharmaceutical
- ✓ Food Processing
- ✓ Chemical Process Industries
- ✓ Potable Water, Beer and Wine
- ✓ Edible Oils

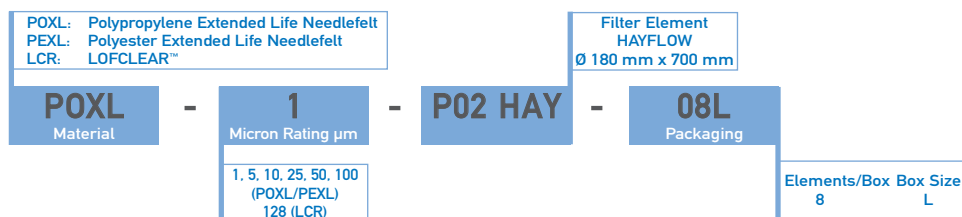
Remember “Filter Cost” and “Filtration Cost” are Not the Same Thing

We can explain the difference and demonstrate the HAYFLOW advantage in your application.



PRODUCT CODES

HAYFLOW™



Eaton PRECISION FILTER

PRODUCT LINE	Media	Type						μ-Ratings																					
								1	5	10	25	50	80	100	125	150	200	250	300	400	600			800	1000	1250			
PROGAF™	PGF	50	51	55				SEE EFFICIENCY CHART ON PAGE 11																					
ACCUGAF™	AGF AGFE	51 51	53	55 55	57 57	59		SEE EFFICIENCY CHART ON PAGE 15																					
LOFCLEAR™	LCR	123 130 522	124 135	125 525	126 527	128 529		SEE EFFICIENCY CHART ON PAGE 16																					
CLEARGAF™	POF							x	x	x	x	x		x			x												
	PEF							x	x	x	x																		
	POXLF								x	x	x	x		x															
	PEXLF NMOF							x	x	x		x	x	x	x	x	x	x	x	x	x	x							
DURAGAF™	POXL							x	x	x	x	x		x															
	PEXL							x	x	x	x	x		x															
SENTINEL®	PO							x	x	x	x	x		x			x												
	PE							x	x	x	x	x		x			x												
	NMO								x	x	x	x	x	x	x	x	x	x	x	x	x	x							
SNAP-RING®	PO							x	x	x	x	x		x			x												
	PE NY HT PT W NMO PMO PEMO PTMO PVMO PEMU							x	x	x	x	x		x			x												
										x	x	x	x																
										x	x	x	x																
											x		x																
									x	x	x																		
													x	x	x	x	x	x	x	x	x	x	x	x	x	x	x		
														x			x	x		x	x	x	x	x	x	x	x		
															x			x	x										
														x				x	x										
															x					x	x								
															x			x			x	x							
BANDSEAL™	NMO										x	x	x	x	x	x	x	x	x	x	x	x	x						
HAYFLOW™ (special basket required)	POXL PEXL LCR					128		x	x	x	x	x		x															

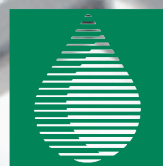
Available Size / Maximum Flow (m³/h)							Rings			Weld/Sewn			Media			Max op. Temp (°C) ¹⁾
01	02	03	04	43	45		SENTINEL	SNAP-RING	Band	Ring	Side	Bottom	Material	Type	Surface Finish	
	10						E			W	W	W	Polypropylene	Meltblown		90
8	15						E			W	W	W	Polypropylene	Meltblown		90
8	15						H			W	S	S	Polyester	Meltblown		150
8	15						E			W	S	S	Polypropylene	Meltblown		90
8	15						E			W	S	S	Polypropylene	Meltblown		90
8	12						Z			W	W	W	Polypropylene	Meltblown		90
20	40						E			W	W	W	Polypropylene	Felt	singed	90
20	40						H			W	W	W	Polyester	Felt	singed	140
20	40						E			W	W	W	Polypropylene	Felt	glazed	90
20	40						H			W	W	W	Polyester	Felt	glazed	140
20	40						H			W	S	S	Nylon	Mesh		140
15	30						E			W	W	W	Polypropylene	Felt	glazed	90
15	30						H			W	W	W	Polyester	Felt	glazed	150
20	40	6	12				E			W	W	W	Polypropylene	Felt	singed	90
20	40	6	12				H			W	W	W	Polyester	Felt	singed	150
20	40	6	12				Z			S	S	S	Nylon	Mesh		125
20	40	6	12				S			S	W	S	Polypropylene	Felt	singed	110
20	40	6	12				S			S	S	S	Polypropylene	Felt	singed	110
20	40	6	12				S			S	W	S	Polyester	Felt	singed	190
20	40	6	12				S			S	S	S	Nylon	Felt		190
20	40						A			S	S	S	Meta-Aramid	Felt	singed	205
20	40						A			S	S	S	PTFE	Felt		260
20	40						S			S	S	S	Wool	Felt		135
20	40	6	12				S			S	S	S	Nylon	Mesh		190
20	40						A			S	S	S	Polypropylene	Mesh		110
20	40						S			S	S	S	Polyester	Mesh		190
20	40						A			S	S	S	ETFE	Mesh		150
20	40						A			S	S	S	PVOF	Mesh		150
20	40						S			S	S	S	Polyester	Mesh		145
20				6	12				R	S	S	S	Nylon	Mesh		190
										S	S	S	Nylon	Mesh		190
	40						E			W	W	W	Polypropylene	Felt	glazed	90
	40						H			W	W	W	Polyester	Felt	glazed	150
	25						E			W	S	W	Polypropylene	Meltblown		90

1) Values for general information only. Customers are urged to make their actual use or soak tests.

2) Reference values based on single pass tests in ambient lab conditions with ISO test dust in water at 10 m³/h / size 02

3) Based on an accepted paint-compatibility test (see document QUC-STA-10)

filter-technics



Bag Filtration Systems

Single and Multi-Bag
Housings

Premium and Heavy-Duty
Filter Bags

Solving Your Need
for More Filtration Efficiency

With Smarter Technology

filter-technics

Filter-Technics bvba

Adrian Van Roeyenstraat 28- 2070 Zwijndrecht - Belgium

Phone : +32 32540567 - Fax : +32 32540495

info@filter-technics.be - www.filter-technics.be



TECHNICAL DATA

Series	Type*	No. Of Bags		Bag Size	Max. Flow 2 GPM	Material 1	Max. Allowable Pressure		Max. Allowable Temperature**		Housing Volume		Housing Weight		Inlet Outlet Connection	Type	Vent 4	Dimensions In Inches								
							PSI	°F	GAL	LBS	°F	LBS	IN	IN				A	B	C	D	E	F			
MAXILINE VMBF SE	VMBF-0402-AB10-040A-UT-11SE	4	2	400	SS	150	250	69	484	4"	Flanged	1"	6.00	20.00	10.50	22.00	15.75	68.00								
	VMBF-0602-AB10-060A-UT-11SE	6	2	900	SS	150	250	139	983	6"	Flanged	1"	7.25	20.00	13.00	31.50	20.75	80.00								
	VMBF-0802-AB10-080A-UT-11SE	8	2	1750	SS	150	250	141	1023	8"	Flanged	1"	8.25	19.00	12.80	31.50	20.50	80.00								
MAXILINE MBF HE	MBF-0302-AB10-030A-UT-11HE	3	2	230	SS or CS	150	250	40	245	3"	Flanged	1"	6.00	22.50	6.40	18.00	12.75	60.00								
	MBF-0402-AB10-040A-UT-11HE	4	2	400	SS or CS	150	250	69	380	4"	Flanged	1"	6.00	22.20	7.40	24.00	16.00	68.40								
	MBF-0602-AB10-060A-UT-11HE	6	2	900	SS or CS	150	250	90	440	6"	Flanged	1"	7.50	19.50	9.03	24.00	16.50	68.80								
	MBF-0802-AB10-080A-UT-11HE	8	2	1750	SS or CS	150	250	116	644	8"	Flanged	1"	8.25	19.00	6.48	30.00	20.50	79.50								
MAXILINE MBF HD	MBF-0302-AB10-030A-UT-11HD	3	2	230	SS or CS	150	250	40	255	3"	Flanged	1"	6.00	22.50	6.40	18.00	12.75	66.00								
	MBF-0402-AB10-040A-UT-11HD	4	2	400	SS or CS	150	250	54	390	4"	Flanged	1"	6.00	22.20	7.80	24.00	16.00	68.00								
	MBF-0602-AB10-060A-UT-11HD	6	2	900	SS or CS	150	250	95	460	6"	Flanged	1"	7.00	20.00	9.80	26.00	18.50	68.00								
	MBF-0802-AB10-080A-UT-11HD	8	2	1750	SS or CS	150	250	140	655	8"	Flanged	1"	8.25	19.00	10.78	30.00	20.50	66.00								
	MBF-1002-AB10-100A-UT-11HD	10	2	2600	SS or CS	150	250	215	1400	10"	Flanged	1"	10.00	17.00	13.30	36.00	24.50	70.00								
	MBF-1202-AB10-100A-UT-11HD	12	2	2600	SS or CS	150	250	245	1500	10"	Flanged	1"	10.00	17.00	13.80	38.00	24.50	72.00								
	MBF-1402-AB10-100A-UT-11HD	14	2	2600	SS or CS	150	250	311	1800	10"	Flanged	1"	11.50	20.00	11.81	42.00	28.00	76.00								
	MBF-1602-AB10-120A-UT-11HD	16	2	3500	SS or CS	150	250	317	1875	12"	Flanged	1"	11.50	20.00	11.81	42.00	28.00	76.00								
	MBF-1802-AB10-120A-UT-11HD	18	2	3500	SS or CS	150	250	446	2420	12"	Flanged	1"	12.50	22.00	10.69	48.00	31.00	88.00								
	MBF-2002-AB10-140A-UT-11HD	20	2	4500	SS or CS	150	250	454	2505	14"	Flanged	1"	12.50	22.00	10.69	48.00	31.00	88.00								
	MBF-2202-AB10-140A-UT-11HD	22	2	4500	SS or CS	150	250	570	2730	14"	Flanged	1"	12.50	22.00	13.44	52.00	33.00	92.00								
	MBF-2402-AB10-140A-UT-11HD	24	2	4500	SS or CS	150	250	570	2800	14"	Flanged	1"	12.50	22.00	13.44	52.00	33.00	92.00								
TOPLINE	TBF-0101-AB10-020A	1	1	90	SS or CS	150	400	3.5	80	2"	Flanged	1/4"	17.70	15.50	1.93	8.62	12.08	53.50								
	TBF-0102-AB10-020A	1	2	180	SS or CS	150	400	7.25	93	2"	Flanged	1/4"	17.70	31.00	1.93	8.62	12.08	84.25								
	TBF-0102-AB10-020R-M32B0	1	2	180	SS	150	400	7.25	93	2"	Tri-Clamp	1/4"	15.80	32.78	1.93	8.62	12.83	84.25								
SIDELINE	SBF-0101-AB10-020A	1	1	90	SS	150	400	4.75	84	2"	Flanged	1/4"	17.70	19.50	3.15	8.62	8.66	54.70								
	SBF-0101-AB10-030A	1	1	90	SS	150	400	4.75	84	3"	Flanged	1/4"	17.70	19.50	3.15	8.62	8.66	54.70								
	SBF-0102-AB10-020A	1	2	180	SS	150	400	8.5	102	2"	Flanged	1/4"	17.70	35.00	3.15	8.62	8.66	85.50								
	SBF-0102-AB10-030A	1	2	180	SS	150	400	8.5	102	3"	Flanged	1/4"	17.70	35.00	3.15	8.62	8.66	85.50								
	SBF-0103-AB21-015N	1	3	25	SS	300	225	0.5	26	1 1/2"	NPT	1/4"	na	11.77	2.95	4.50	3.50	21.80								
	SBF-0104-AB21-015N	1	4	50	SS	300	225	0.7	29	1 1/2"	NPT	1/4"	na	17.87	2.95	4.50	3.50	33.90								
DUOLINE	TOPLINE	2	2	180	SS or CS	150	250	16	240	2"	Flanged	1/4"	17.70	24.50	1.93	8.62	37.45	84.25								
	SIDELINE	2	2	180	SS	150	250	16	300	2"	Flanged	1/4"	17.70	27.50	3.15	8.62	30.82	85.50								
	SIDELINE	2	2	180	SS	150	250	17	330	3"	Flanged	1/4"	17.70	27.50	3.15	8.62	33.32	85.50								
	FLOWLINE	2	2	180	SS or CS	150	250	15	200	2"	Flanged	1/4"	17.70	28.44	3.34	7.68	37.45	85.50								
MODULINE	TOPLINE	1+1	2	360	SS or CS	150	250	16	230	2"	Flanged	1/4"	17.70	24.50	1.93	8.62	34.32	84.25								
	SIDELINE	1+1	2	360	SS	150	250	16	230	2"	Flanged	1/4"	17.70	27.50	3.15	8.62	27.44	85.50								
	SIDELINE	1+1	2	360	SS	150	250	17	300	3"	Flanged	1/4"	17.70	27.00	3.15	8.62	29.70	85.50								
	FLOWLINE	1+1	2	360	SS or CS	150	250	15	170	2"	Flanged	1/4"	17.70	28.44	3.34	7.68	26.64	85.50								
POLYLINE	PBF-0101-PO10-020A	1	1	50	PPL	150	70	6.6	55	2"	Flanged	1/4"	3.26	20.75	3.38	10.35	8.50	60.00								
	PBF-0101-PO10-020N	1	1	50	PPL	150	70	6.6	51	2"	NPT	1/4"	3.26	20.75	3.38	10.35	6.14	60.00								
	PBF-0102-PO10-020A	1	2	100	PPL	150	70	9.5	68	2"	Flanged	1/4"	3.26	36.75	3.38	10.35	8.50	76.00								
	PBF-0102-PO10-020N	1	2	100	PPL	150	70	9.5	64	2"	NPT	1/4"	3.26	36.75	3.38	10.35	6.14	76.00								
	PBF-0102-PF07-020A	1	2	100	PVDF	100	80	9.5	100	2"	Flanged	1/4"	3.26	36.00	3.88	10.35	8.50	75.25								
	D-PBF-0101-PO10-020A	1+1	1	50	PPL/CPVC	150	70	14.5	162	2"	Flanged	1/4"	6.10	39.04	3.88	10.35	30.00	75.10								
	D-PBF-0101-PO10-020N	1+1	2	100	PPL/CPVC	150	70	20.6	190	2"	Flanged	1/4"	6.10	55.04	3.88	10.35	30.00	91.10								
	FBF-0101-AB10-020A	1	1	90	SS or CS	150	250	4	30	2"	Flanged	1/4"	17.70	20.75	3.34	7.68	6.70	54.90								
FLOWLINE	FBF-0101-AB10-020N	1	1	90	SS or CS	150	250	4	30	2"	NPT	1/4"	17.70	19.64	3.34	7.68	5.37	54.90								
	FBF-0102-AB10-020A	1	2	180	SS or CS	150	250	7	43	2	Flanged	1/4"	17.70	36.31	3.34	7.68	6.70	85.70								
	FBF-0102-AB10-020N	1	2	180	SS or CS	150	250	7	43	2"	NPT	1/4"	17.70	35.19	3.34	7.68	5.37	85.70								
ECOLINE	EBF-0101-AB10-020N	1	1	90	SS	100	250	4	25	2"	NPT	1/4"	na	19.64	3.24	7.68	5.37	37.00								
	EBF-0102-AB10-020N	1	2	180	SS	100	250	7	38	2"	NPT	1/4"	na	35.19	3.24	7.68	5.37	68.00								
	EBF-0103-AB10-015N	1	3	25	SS	150	250	0.5	9	1 1/2"	NPT	1/4"	na	11.77	2.78	4.50	3.50	22.45								
	EBF-0104-AB10-015N	1	4	50	SS	150	250	0.7	11	1 1/2"	NPT	1/4"	na	17.87	2.78	4.50	3.50	33.84								

TABLE OF CONTENTS

Applications 10



12

QIC-LOCK™ Concept

Multi-Bag housing with Open and Close cycles of less than 30 seconds!

QIC-LOCK™ MAXILINE™ VMBF SE

The user friendly, cost effective bag filter housing for high volume applications and processes demanding frequent bag change-out.
Ideal for batch process runs and safety filtration.

14



15

MAXILINE™ MBF HE

The user friendly, perfect sealing bag filter housing for safe filtration and minimized product loss. Ideal for batch processes which demand the highest quality of filtration.



MAXILINE™ MBF HD

The user friendly, perfect sealing bag filter housing for safe filtration and minimized product loss. Features an economic davit cover design.

16



17

Custom Designed Housings

Eaton bag filter housings are designed to accommodate a wide range of possible standard modifications.



TOPLINE™ Filter Housings

The best filter housing for the most demanding applications.

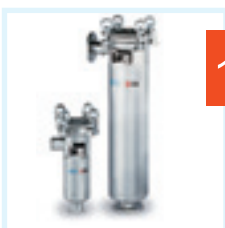
18



19

SIDELINE™ Filter Housings

Mid-priced filter housings for most applications.



FILTER HOUSINGS

DUOLINE™ / MODULINE™ / TOPLINE™ Dual Filter Housings

Discover the flexibility of using multiple housings together as part of a system.

20



21

POLYLINE™ Filter Housings

All-plastic, rugged Polypropylene or PVDF construction for superior corrosion resistance.



FLOWLINE™ Filter Housings

Versatile, heavy-duty but cost-effective filter housings.

22



23

ECOLINE™ Filter Housings

Light-weight, economical filter housings.



EATON Filter Housing Accessories

Original Eaton Accessories, Consumables and Spare Parts for safety and reliability.

24



50

Technical Information



Pipeline Strainers & Gas Liquid Separators

Overview of the entire Eaton pipeline strainer and gas/liquid separator lines.

52



TABLE OF CONTENTS

10 Applications

An overview of some of the thousands of filtration processes that can be improved and made more efficient or cost effective with Eaton High Performance Filter Bags.



26 What's Behind Every Eaton Precision Filter Bag

A quick look at what makes an Eaton high performance filter bag and the technology behind it.

PROGAF™ Filter Bags

A revolution in filter bags. PROGAF™ combines a high-efficiency media with a high capacity pre-filter for effective particulate removal down to the submicron level.



34 ACCUGAF™ Filter Bags

Highly efficient filter bags that have an extremely high particle retention efficiency. Applications that require this high filtration efficiency can now take advantage of bag filtration with Eaton's ACCUGAF™.

LOFCLEAR™ Filter Bags

Highly efficient filter bags with a special multi-layer construction that results in a better than nominal efficiency in demanding applications.



38 DURAGAF™ Filter Bags

Features increased media thickness with finer fibers for high pore volume. Reduced time between bag changings improves operating efficiencies and reduces operating costs. Discover how DURAGAF™ can work better in your application.

FILTER BAGS

CLEARGAF™ Filter Bags 40

For food, beverage, and pharmaceutical applications, most Eaton filter bags can be manufactured, packaged, and stored to meet EEC and FDA requirements.



41 BANDSEAL™

Tie-on filter bags for filtration without a vessel.



SENTINEL® 42

All-welded construction bags for higher filtration efficiency. Unique ring seal for worry-free sealing assurance.



43 SNAP-RING®

Sewn construction filter bag for less demanding applications.



HAYFLOW™ 44

Eaton's revolutionary new filter element.



50 Technical Information



Pipeline Strainers & Gas Liquid Separators

Overview of the entire Eaton Pipeline Strainer line and gas/liquid separator lines.

52



APPLICATIONS

Typical Applications for Eaton High Performance Filter Bags

Automotive

Filtration of pretreatment bath, filtration of E-Coat, topcoat and clearcoat, primer, paint ring line filters, parts cleaning fluids, drawing compounds, lubricants, metal working fluids and pump intake filters.



Chemical

Catalyst recovery, removal of pipe scale, polishing of aqueous process fluids, alkalis, acids and solvents, filtration of emulsions and dispersions, gel removal from resins. Activated carbon or catalyst removal in the fine chemicals industry is a typical example of a demanding application in chemical processing. Eaton Filter Bags meet these application requirements for high filtration efficiency coupled with long service life and reliability.



Electronics

Wafer and chip processing, electronic etching baths, photo-chemical polishing and high-purity water filtration and prefiltration of various membrane filtration processes to improve their cost effectiveness. Eaton Filter Bags demonstrate the required purity, efficiency and consistent performance.



Food and Beverage

Polishing filtration of wine, spirits and beer, removal of particles from edible oils, removal of carbon black from cellulose, slime removal in gelatins, liquid sugar, thick juice, corn syrup polishing, starch processing, milk processing and soft drinks. Many Eaton Filter Bags conform to FDA and even EEC food processing standards and can meet the unique and varied demands of these applications.



Metal Working

Filtration of hydraulic oil, pretreatment system filtration, precious metal recovery, metal working fluids, and drawing compounds. Parts cleaning machines use our filter bags for minimizing residual dirt on parts.



Petrochemicals

Filtration of lube oils, fuel additives, enhanced oil recovery, filtration of amine solutions, filtration of glycol fluids, gas purification processes, distillation and cracking processes, amine washers, off-shore filter stations, oil drilling and injection fluids.



Paint and Lacquer

Removal of agglomerates, removal of paint coagulates, solvent filtration, removal of storage contaminants, filling lines, and paint mixing lines, monomer purification.



Pharmaceutical

Recovery of expensive active ingredients, catalyst recovery, active carbon purification and removal, filtration of gelatins, hormones, vitamin extracts, polishing of herbal mixtures, protein removal from plasma, filtration of saline solutions.



Resins, Plastics, Inks and Coatings

Oil and polymer filtration, dispersions, polymerization batches, resins for can coatings, plastics compounding, printing ink, plastics processing, paper coatings, high purity ink-jet fluid filtration.



Water Treatment

Well water filtration, water treatment plants, silt removal, pipe scale removal, sand and algae removal from sea water, ion exchange resin recovery, calcium deposit removal, filtration of chemicals used for water treatment, dust removal from cooling tower installations. Surface water filtration is an area traditionally dominated by cartridge filtration. Now, the high efficiency and long life of Eaton High Performance Filter Bags are a cost-effective alternative to expensive cartridges.



QIC-LOCK[®] CONCEPT

User friendly

Economical

**Fast · Simple · Efficient · Economical · Safe · User Friendly · Durable
Low Maintenance · Cost Effective · Approved Design · High Productivity**

Terms that reflect bag filter user expectations in the modern day production environment.

MULTI-BAG/MAXILINE[™] HOUSING OPEN AND CLOSE CYCLES IN LESS THAN 30 SECONDS!

The revolutionary QIC-LOCK[™] opening mechanism answers all the demands of Bag Filtration users working in an environment where productivity and safety are the key priorities. Years of field-based experience on earlier designs such as the V-clamp “toggle” closure followed by the “ratchet” system have all proven the requirement for benefits of rapid opening mechanisms.

- QIC-LOCK opening mechanism is safe to use, an interlock prevents opening until the housing is entirely vented.
- QIC-LOCK opening mechanism is simple and fast to operate. Standing in 1 position, the operator can rotate the hand-wheel and open the cover, there is no requirement to have full movement and access around the housing or the use of any tools as with conventional bolted closures.
- QIC-LOCK opening mechanism has a rugged design, precision machining assures long-life and repeatable operation, and a special coating protects the spindle surface from wear and corrosion.

The design is approved for all pressure housing design codes.

QIC-LOCK opening mechanism doesn't just make life easier for operators; there are significant cost benefits to be realized with greatly reduced down times and lower maintenance costs.

Safe

- 1** Filter element change necessary, opening the safety interlock ensures simultaneous pressure relief



- 2** Rotation of the spindle using a hand-wheel opens the V-clamp into the end position



- 3** Opening the cover aided by spring assisted mechanism



- 4** Filter element change



- 5** Closing of the cover



- 6** Closing of the V-clamp by rotation of the spindle



- 7** Closing of the safety interlock, housing is ready to go on-line!



Easy

Simple

AND CLOSE

Efficient

Cost effective

Fast

MAXILINE™ VMBF SE

QIC-LOCK™ MAXILINE™ VMBF SE

The user friendly, cost effective bag filter housing for high volume applications and processes demanding frequent bag change-out. Ideal for batch process runs and high dirt load applications.

- QIC-LOCK rapid opening mechanism ensures simple, operator friendly and safe operation with minimal downtime to increase productivity and decrease running costs.
- Unique 3-point hold down or bayonet fittings ensure high quality of seal between each filter bag and housing body. Special tool (supplied) ensures simple effective operation.
- A counter-balanced spring assisted cover-lifting mechanism balances the cover perfectly giving it a weightless feel. Opening and closing of the cover with the "little finger" is a reality.
- Positive O-ring sealing offers easy and safe operation.
- Side inlet and bottom outlet provides easy and full drainage, tangential outlet option available to reduce housing height.
- Available in Type 304 or 316 stainless steel for high corrosion resistance.
- Housing volume is optimized to minimize product loss.
- 6 standard sizes with 4 through to 24 bag housings available (size 02).



These value added features:

QIC-LOCK spindle mechanism

Automatic safety interlock for venting housing

Low profile design with tangential inlet/outlet.

Spring assisted cover lifter

See page 5 for dimensions.

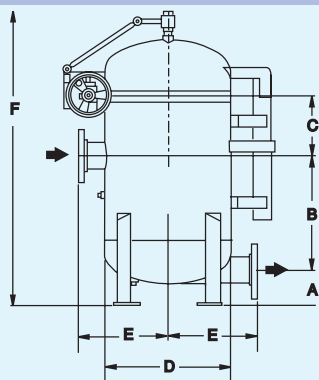
Give these benefits

Operator friendly, simple, fast bag change-out. Ideal for processes requiring frequent bag changes such as batch processes.

Cover cannot be opened if housing is under pressure.

Reduces housing height to make bag changing easier. No need for ladders, stools or catwalks.

Quick, easy opening of even the largest size covers by a single person.



MAXILINE™ MBF HE

MAXILINE™ MBF HE

The user friendly, cost effective bag filter housing for high volume, multiple applications and processes.

- The bag filter housing is designed with a proven swing eye-bolt or segment clamp closure mechanism.
- Unique 3-point hold down or bayonet fittings ensure high quality of seal between each filter bag and housing body. Special tool (supplied) ensures simple, effective operation.
- A counter-balanced spring assisted cover-lifter balances the cover perfectly giving it a weightless feel. Opening and closing of the cover with the "little finger" is a reality.
- Positive O-ring sealing offers easy and safe operation.
- Side inlet and bottom outlet provides easy and full drainage, tangential outlet option available to reduce housing height.
- Available in carbon steel or Type 304 or 316 stainless steel for high corrosion resistance.
- Housing volume is optimized to minimize product loss.
- 6 standard sizes with 4 through to 24 bag housings available (size 02).



These value added features:

Low profile design with tangential inlet/outlet

Positive, 3-point bag hold downs

Spring assisted cover lifter

Eye-bolt cover closure

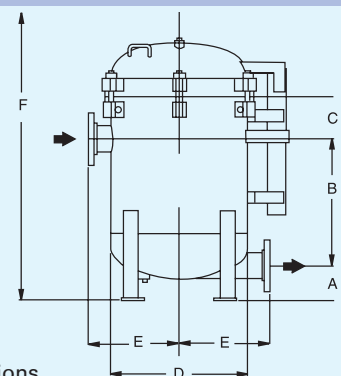
Give these benefits

Reduces housing height to make bag changing easier. No need for ladders, stools or catwalks.

Individual, bag sealing for by-pass free filtration.

Quick, easy opening and closing of even the largest size covers.

Rugged, proven design, easy to use.



See page 5 for dimensions.

MAXILINE™ MBF HD

MAXILINE™ MBF HD

The MAXILINE HD multi-bag filter housing features a cost effective, handwheel operated, davit cover. Loosen the swing bolts, turn the davit handwheel and swing the cover aside.

- Standard ASME "U" Code Stamp.
- Tapered, electro-polished stainless steel perforated baskets.
- Unique 3-point hold-down or bayonet fittings ensure high quality of seal between each filter bag and housing body. A special tool (supplied) ensures simple, effective operation.
- Rugged, simple handwheel-operated davit cover makes the HD perfect for cost sensitive applications.
- Hydraulic-assist davit cover is available as an option.
- Positive O-ring sealing provides easy, reliable operation.
- Available in carbon steel and Type 304 stainless steel for high corrosion resistance.
- 7 standard sizes with 3 through to 24 bag housings are available for size 02 filter bags.



These value added features:

Give these benefits

Hand wheel operated davit cover

Rugged, reliable and very cost effective.

Positive bag hold downs

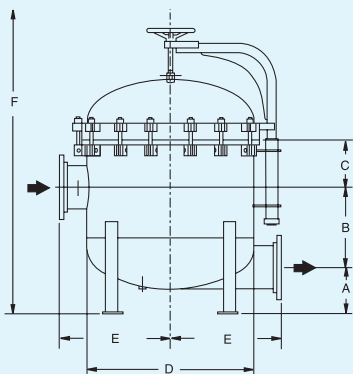
Perfect bag to housing sealing for no by-pass

Up to 24 bags per housing

Can handle very high flow rate / high dirt load applications

Positive O ring seal

No external leakage



See page 5 for dimensions.

CUSTOM DESIGNED HOUSINGS

Eaton bag filter housings are designed to accommodate a wide range of possible standard modifications



EPOXY coating

Material of construction optimized for Chemical and Temperature compatibility:

Housing - Carbon steel, Stainless steel in various grades, Hastelloy®, Polypropylene, PVDF, PVC

Coatings - PTFE/FEP, ECTFE, Polyurethane and Epoxy

Sealings - A wide range of Gaskets and O-rings are available

Process Operating Conditions:

Pressure/Temperature - Depending on housing size, up to 1000 psi/750°F, Heating jackets with 200 psi/750°F

Flow rates - Up to 4400 gpm



QIC-LOCK™

Cover Closure/Lifting Mechanisms:

Closure - QIC-LOCK spindle, T-bolt, Swing eye-bolts, Hex-nuts, Stud-bolts

Lifting - Spring, counterbalanced, hydraulic and hand wheel davit



Surface Finish/Connections:

Surface - Glass-beaded, Sand Blasted-painted, Electro-polished, Hand-polished, Acid-pickled, Coated (see above)

Connections - Standardized flanges and threads (DIN, NPT, ANSI, BSP), Sanitary (Tri-clamp, Milk pipe, IDF, RJT and other sterile types)



Approvals and Design Codes:

ISO 9001 : 2000 Certification

PED (Pressure Equipment Directive 97/23/EC)

AD 2000-Merkblätter, EN 13445, Stoomwezen, CODAP, BS5500, ASME VIII Div 1

Notified body: TÜV Nord CE 0035

Modules: Up to module H1 and G

SVTI

ASME (American Society of Mechanical Engineers)

U stamp and UM stamp, CRN (Canadian Registration Number)

Skid Mounting and Mobiles:

Skids - In-house engineering capability to couple multiple housings and or integrated control systems

Mobiles - Application specific mobile units e.g. Wine Pallet



Wine Pallet

TOPLINE™

TOPLINE™ Filter Housings

The best filter housing for the most demanding applications.



- A TOPLINE is the finest single bag filter housing available. From its high-performance design to its heavy duty investment-cast components, everything about TOPLINE is simply the best.
- Side inlet, flow through the top design results in a minimum headroom of unfiltered liquid for easy bag change-out as well as providing optimum sealing of the filter bag.
- For filter bags sizes 01 and 02.
- Available in carbon steel or Type 304 or 316 stainless steel construction for high corrosion resistance
- A smooth, bead-blasted finish, coupled with a minimum 2-weld design, makes it easy to completely clean the interior of the TOPLINE housing.
- All TOPLINE housings come with an exclusive Five Year Warranty and the ASME code UM stamp.
- TOPLINE housings... for applications too demanding for ordinary bag filters.



These value added features:

Top inlet with liquid flow through the cover.

Cover seals directly onto the filter bag

Five year warranty

Adjustable mounting legs

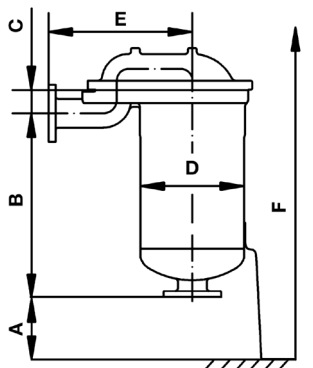
Give these benefits

Reduced headroom for unfiltered liquid makes bag change-out quick and easy.

Perfect sealing for the finest micron by-pass free filtration applications.

Years of trouble and maintenance free service.

Easier installation



See page 5 for dimensions.

SIDELINE™ Filter Housings

Mid-priced filter housings for most applications.

- A SIDELINE housing is a solid, investment-cast filter in the medium cost range.
- A SIDELINE housing offers a standard eye-bolt closure and a choice of 2" or 3" ANSI flanged connections as standard.
- For filter bags sizes 01, 02, 03 and 04.
- Type 304 or 316 stainless steel construction means superior corrosion resistance and consistent performance, year after year. A smooth, bead-blasted finish, coupled with SIDELINE's minimum 2-weld design, makes it easy to completely clean the interior of the housing.
- All SIDELINE housings come with an exclusive Five Year Warranty and the ASME code UM stamp.
- SIDELINE housings... for all heavy duty industrial applications.



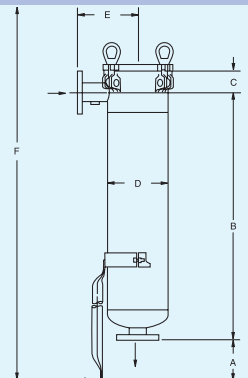
These value added features:

- Side inlet with evacuation cover
- Cover opening direction can be changed in the field
- Compression bag hold down
- Integral cover handle

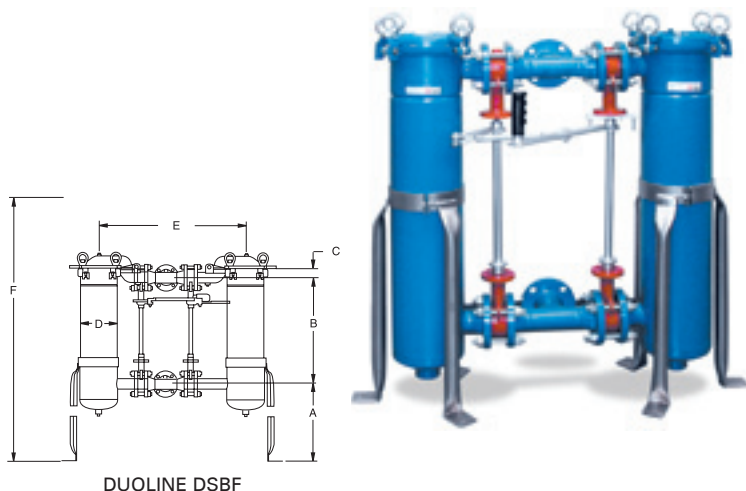
Give these benefits

- Less messy bag changing, no spillage of unfiltered liquid.
- Easily adapts to different piping layouts. Accommodates walls, posts or other obstructions.
- 360 degree sealing of the filter bag to the housing.
- Ergonomical and easy to open

See page 5 for dimensions.



DUOLINE™ / MODULINE™ / TOPLINE™



DUOLINE™ Filter Housings

Duplex units for continuous filtration processes.

The DUOLINE bag filter system consists of two bag filter housings (SIDELINE housing or TOPLINE housing) fitted together at the inlet and outlet by either a butterfly or ball valve assembly. Valve assemblies are connected together by a center post handle assembly in order to guarantee a synchronised change from filter A to filter B. A quick turn of the handle diverts the flow from one filter housing to the other. The filtration process runs continuously during bag change-outs.

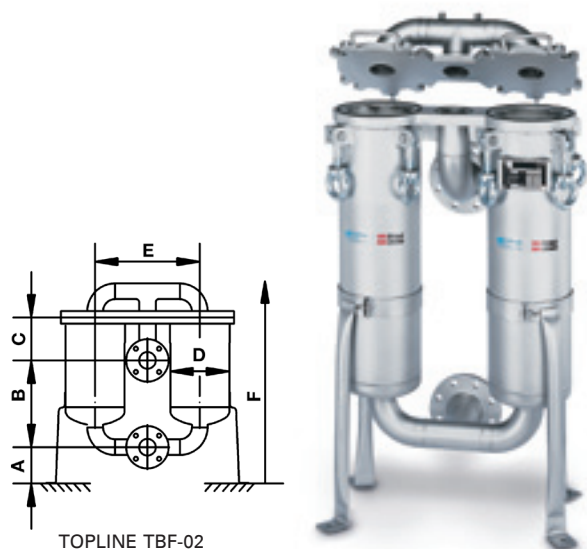
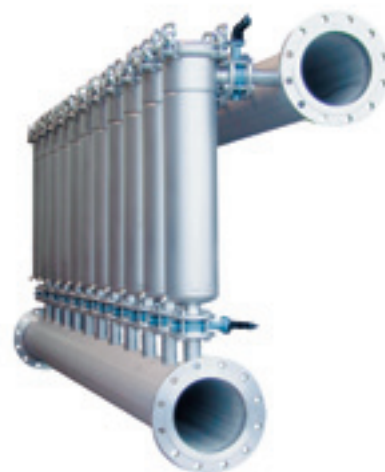
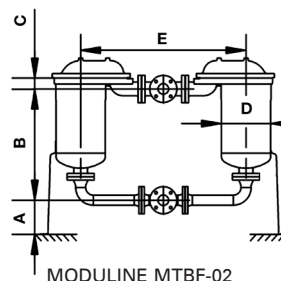
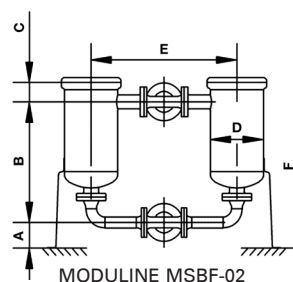
See page 5 for dimensions.

MODULINE™ Filter Housings

Double or modular multibag unit for larger flow rates.

The MODULINE filter housings are multibag units assembled from two or more standard SIDELINE (MSBF) or TOPLINE (MTBF) housings using standard ellbows, manifolds or T-Pipe modules. The MODULINE filter concept offers greater flexibility, capacity can be easily increased by adding further modules. MODULINE housings are fabricated to customer specifications.

See page 5 for dimensions.



TOPLINE™ Dual Filter Housings

Compact 2-bag unit with single cover-lid.

The TOPLINE TBF-02 filter housing combines the advantages of the TOPLINE housing series with a compact 2-bag design. Features a single cover-lid, eye-bolt closure and standard adjustable leg assembly.

See page 5 for dimensions.

POLYLINE™

POLYLINE™ Filter Housings

Rugged, all plastic housings with a choice of PVC, CPVC, PPL or PVDF construction to meet the needs of all ultra-pure or corrosive applications.

- POLYLINE filter housings have no metal components to rust, corrode or contaminate the process media. Housings are available for size 01 or 02 filter bags (PVDF 02 only).
- With a POLYLINE housing you get extra features at no extra cost such as a vent/bleed valve installed on the housing cover and an integral mounting flange for rock solid installation without the need for support legs. The two bottom pipe connections are interchangeable as outlet or drain, allowing easy modification to in-line or loop piping arrangements to accommodate any installation design.
- The hand removable, no tools required, spin off cover makes filter bag changing quick and easy. Just a few turns of the cover using the built-in handle opens and closes the housing with little effort.
- For applications that require continuous flow, duplex models are available. Here, the flow never has to be shut down for bag change-out. For contamination sensitive or severely corrosive filtration applications, a POLYLINE housing is your best choice.



PVC/CPVC models feature true union connections

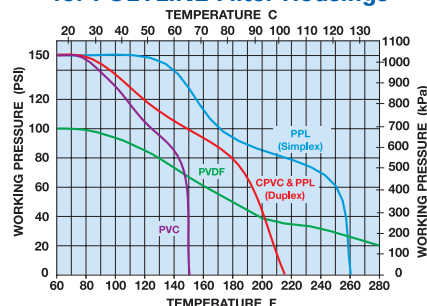


Duplex models for continuous flow applications



PPL/PVDF models feature external cover threads

Operating Temperature/Pressure for POLYLINE Filter Housings



These value added features:

All plastic construction with smooth interior surfaces.

Hand removable spin off cover.

Two outlets

Duplex model available

Give these benefits

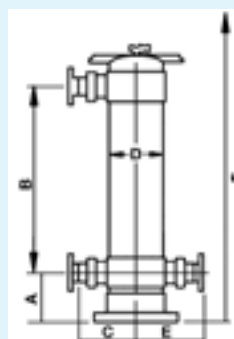
Easy to clean. Will never rust, corrode or contaminate the process media.

Fast bag change out, no tools needed to remove cover

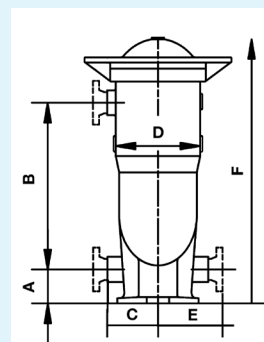
Allows either in-line or loop piping connections with other outlet used as a drain.

Used in applications requiring continuous flow.

PVC/CPVC



PPL/PVDF



See page 5 for dimensions.

FLOWLINE™

FLOWLINE™ Filter Housings

Versatile, heavy-duty cost-effective filter housings.

- A FLOWLINE housing is the best choice for industrial, commercial and OEM applications that do not require a code stamp. The standard design is available with threaded or flanged connections.
- A cost-effective design incorporates all of the features heavy duty applications demand but in a lightweight construction.
- FLOWLINE housings feature a special design that uses a minimum number of welds for a smooth, easy to clean interior surface.
- For filter bags sizes 01 and 02.
- Available in carbon steel and Type 304 or 316 stainless steel for high corrosion resistance. A smooth, bead-blasted finish makes it easy to completely clean the interior of the housing.



These value added features:

Fabricated construction

Cover opening direction can be changed in the field

Adjustable mounting legs

Integral cover handle

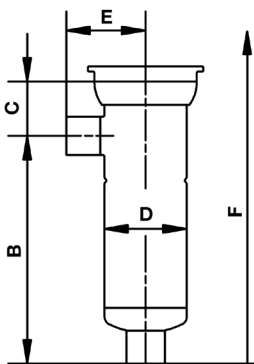
Give these benefits

Cost effective, lighter weight than a cast housing.

Easily adapts to different piping layouts. Accommodates walls, posts or other obstructions

Easier installation

Makes it easier to open and close cover.



See page 5 for dimensions.

ECOLINE™ Filter Housings

Lightweight, economical filter housings.

- ECOLINE housings have a lightweight design for commercial, OEM, non-hazardous, low pressure applications that do not require a Code Stamp.
- The cost-effective design incorporates a handy V-clamp closure and threaded couplings. The lid is fitted with a 1/4" NPT connection for easy fitting of a vent or gauge.
- For filter bags sizes 01, 02, 03 and 04.
- Type 304 stainless steel construction offers superior corrosion resistance and consistent performance. A smooth, bead-blasted finish makes it easy to completely clean the interior of the housing.



These value added features:

Cost effective design

Compression bag hold down

V-clamp cover closure

Side inlet with evacuation cover

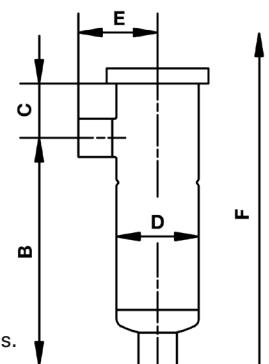
Give these benefits

Perfect for cost sensitive applications.

360 degree sealing of the filter bag to the housing.

Easy to operate for quick cover removal and closure.

Less messy bag changing, no spillage of unfiltered liquid.



See page 5 for dimensions.

Lid gasket

Bag

ACCESSORIES

EATON

FILTER HOUSING ACCESSORIES

Original Eaton Accessories, Consumables and Spare Parts for Safety and Reliability

The wide range of Eaton Filter Housing Accessories makes it possible to custom design a housing to the exact requirements of your application, no matter how complex or unique it may be.

Accessories can be used to improve processes as well as the application requirement itself. For example, displacement balloons make bag change-out easier, LOFNETIC magnetic inserts extend filter bag life in applications where magnetic particles are encountered.

Original Eaton “Added Value” Accessories are guaranteed to work with your Eaton filter housings as part of the system to deliver the highest performance and reliability.

01 Restrainer Baskets

Heavy duty, electropolished SS 316 perforated plate baskets (included with housing) allows use of filter bags and HAYFLOW™ elements up to differential pressures of 30 psi. Available in all standard sizes, fitting all Eaton bag filter housings. Specially designed restrainer baskets, including special of construction such as HASTELLOY or

EPOXY coated, are available. Standard baskets can be used in combination with adaptor rings for retrofitting other types of housings.

02 LOFNETIC Magnets

Magnet assemblies are inserted into the filter bag during filtration. They are a combination of bag positioner fitted in the center with a magnetic bar(s). Lifetime is extended by retaining magnetic particles such as chips and fines, preventing deposition onto the filter media. They also retain finer magnetic dust when using bags of coarser micron rating. Eaton magnetic strainers are available in size 01 and 02 using one or two SS 316 covered magnetic bars.

03 Bag Positioner

Highly recommended for all installations, mandatory for some, bag positioners or “bag lock’s” ensure correct positioning of the filter bag within the basket and eliminate any “bobbing” up and down movement of the bag caused by uncontrolled back pressure. This avoids any chance of bag bursting. ACCUGAF™, PROGAF™ and LOFCLEAR™ 500 filter bags need to be equipped with a bag positioner. A special new collar design firmly fixes the element inside the bag during filtration. They are available in sizes 01 and 02.





04 Leg Assembly

Height-adjustable leg assemblies are standard for size 01 and 02 TOPLINE™, FLOWLINE™, and SIDELINE™ housings, and optional for ECOLINE™ housings. Wall mounting brackets are also available.

05 Displacement Balloons

Inserting a displacement balloon inside the filter bag minimizes the amount of residual liquid present in the filter bag and reduces product loss. This eases the changing of the filter bags eliminating the need for

expensive pressure-aided draining systems. A special new collar design firmly positions the balloon inside the bag. The SS 316 balloons' maximum DP is 230 psi. They are available in sizes 01 and 02.

06 Manifold Modules

Eaton standard pipe modules are available in SS 316. 90° elbows, flange reductions, flanged "T" sections, and flange manifolds can be easily assembled to make DUOLINE™ or MODULINE™ bag filter versions based on FLOWLINE™, SIDELINE™ or TOPLINE™ size 01 or 02 housings.

07 Adapter Head for Open Filtration

Used in conjunction with SNAP-RING® filter bags in gravity feed open systems. Adapter heads are available in SS 316 and polypropylene with a 1.5" NPT connection for pressures to 20 psi.

08 Gaskets and O-ring Seals

As standard, Eaton metal filter housings are fitted with Buna N O-rings. Plastic housings have Viton® O-rings. Other material options such as EPDM, Viton, TFE encapsulated Viton or Silicone rubber are available as flat gaskets. The options offer a variety of chemical and thermal resistances to meet a multitude of uses and applications.

09 Mesh Strainers

Bag filter housings may be fitted with SS 316 mesh lined strainers in place of baskets to convert them to strainer filters. Mesh strainers are available in four standard sizes: 01, 02, 03 and 04, micron ratings are 25, 50, 100, 150, 250, 400, 800 µm respectively.

10 Miscellaneous

Gauges, Vents, Eye-bolts, Clamp-screws, V-clamps, Center-bolts, Butterfly and Ball Valves are available as accessories or spare parts to fit the various Eaton bag filter housings.

11 Bag Hold-down Rings

The various ECOLINE™, SIDELINE™, FLOWLINE™, POLYLINE™ and MAXILINE™ MBF bag filter housings are fitted with different bag hold-down rings (included with housing). They hold the filter bag securely inside the restrainer basket which in turn is positioned correctly within the housing.

TECHNICAL INFORMATION

U.S. Mesh	Inches	Microns	U.S. Mesh	Inches	Microns
3	0.265	6730	45	0.0138	354
3-1/2	0.223	5660	50	0.0017	297
4	0.187	4760	60	0.0098	250
5	0.157	4000	70	0.0083	210
6	0.132	3360	80	0.0070	177
7	0.111	2830	100	0.0059	149
8	0.0937	2380	120	0.0049	125
9	0.0787	2000	140	0.0041	105
10	0.0661	1880	170	0.0035	88
12	0.0555	1410	200	0.0029	74
14	0.0469	1190	230	0.0024	63
18	0.0394	1000	270	0.0021	53
20	0.0331	841	325	0.0017	44
25	0.0280	707	400	0.0015	37
30	0.0232	595	550	0.0009	25
35	0.0197	500	800	0.0006	15
40	0.0105	420	1250	0.0004	10

COMPARATIVE
PARTICLE
SIZE

FILTER BAG SPECIFICATIONS

Bag Size	Max Flow Water (gpm)	Flow Area (sq.ft.)	Volume (gal.)	Diameter (in.)	Length (in.)
01	90	2.6	2.0	7	17
02	180	5.0	4.5	7	32
03	25	0.8	0.5	4	8
04	50	1.5	0.7	4	14
05	75	2.1	1.0	4	20
43	25	1.0	0.8	3.5	12
45	50	1.6	1.2	3.5	20

CHEMICAL & THERMAL RESISTANCE OF FILTER BAGS

Filter Media	Abbreviation	Temp. °F	Temp. °C	Aqueous Media	Aliphatic Solvents	Aromatic Solvents	Alkaline Systems	Strongly Alkaline	Acid Systems	Strongly Acidic
Polypropylene Felt	PO/POXL/POF/POXL	200	93	●	●		●		●	●
Polyester Felt	PE/PEXL/PEF/PEXFL	300	149	●	●	●	●		●	
Nylon Felt	NY	325	163	●	●	●	●	●		
High Temp. Nomex Felt	HT	400	204	●	●	●	●		●	
Polyester Multifilament	PEMU	300	149	●	●	●	●		●	
Polypropylene Monofilament	PMO	200	93	●	●		●		●	
Nylon Monofilament	NMO	325	183	●	●	●	●	●		
PTFE	PT	500	260	●	●	●	●	●	●	

SSU (Saybolt Seconds Universal)	Centipoise	Engler Degrees 20°C	Redwood Standard
---------------------------------------	------------	---------------------------	---------------------

30	1	-	-
50	5	2	44
100	20	3.5	88
200	40	16	175
300	65	30	263
400	85	43	350
500	105	57	440
600	130	72	525
700	150	90	615
800	175	115	700
900	195	132	790
1000	210	150	880
2000	425	350	1750
3000	625	540	2600
4000	860	740	3500
5000	1050	930	4550
6000	1300	1120	5250
7000	1500	1320	6150
8000	1700	1510	7300
9000	1920	-	-
10000	2150	-	-

VISCOSITY EQUIVALENTS

FLOW CONVERSION FACTORS

M ³ /hr = 3.671 I.G.M.
I.G.P.M. = 41.14 Barrels/Day
T.P.H. = 3.74 I.G.M.
I.G.P.M. = 1.2 U.S. G.P.M.
I.G.P.M. = 4.54 Liters/Min
LITER/MIN = 0.22 I.G.P.M.
U.S. G.P.M. = 0.833 I.G.P.M.
Barrel = 35 Imp. Gallons
Barrel = 42 U.S. Gallons

VOLUME CONVERSION FACTORS

To Obtain: Multiply By:	U.S. Gallon	Imperial Gallon	U.S. Pint	U.S. Pound Water	U.S. Cubic Foot	U.S. Cubic Inch	Liter	Cubic Meter
U.S. Gallon	1	0.833	8.0	8.337	0.13368	231.0	3.78533	0.003785
Imperial Gallon	1.2009	1	9.60752	10.0	0.16054	277.42	4.54596	0.004546
U.S. Pint	0.125	0.1041	1	1.042	0.01671	28.875	0.473168	0.000473
U.S. Pound Water	0.11995	0.1	0.9596	1	0.016035	27.708	0.45405	0.00454
U.S. Cubic Foot	7.48052	6.22888	59.8442	62.365	1	1728.0	28.31702	0.028317
U.S. Cubic Inch	0.004329	0.00361	0.034632	0.03609	0.0005787	1	0.016387	0.0000164
Liter	0.2641779	0.2199756	2.113423	2.202	0.0353154	61.02509	1	0.001
Cubic Meter	264.170	219.969	2113.34	2202	35.31446	61023.38	1000	1

PRESSURE CONVERSION FACTORS

To Obtain: Multiply By:	Pound Sq. In.	Pound Sq. Ft.	Atmosphere	Kilogram Sq. Cm.	Inch Water	Foot Water	Inch Mercury	mm Mercury	Bar
Pounds/Sq. In.	1	144.0	0.068046	0.070307	27.7276	2.3106	2.0360	51.7150	0.06895
Pounds/Sq. Ft.	0.0069545	1	0.000473	0.000488	0.1926	0.01605	0.014139	0.35913	0.000479
Atmosphere	14.696	2116.22	1	1.0332	407.484	33.9570	29.921	760.0	1.01325
Kilogram/Sq. Cm.	14.2233	2048.16	0.96784	1	394.27	32.864	28.959	735.558	0.9807
Inch Water	0.03607	5.194	0.002454	0.00254	1	0.08333	0.0734	1.865	0.00249
Foot Water	0.43278	62.3205	0.029449	0.03043	12.0	1	0.8811	22.381	0.02984
Inch Mercury	0.49115	70.726	0.033421	0.03453	13.617	1.1349	1	25.40	0.03386
mm Mercury	0.019337	2.7845	0.0013158	0.0013595	0.5361	0.04468	0.03937	1	0.001333
Bar	14.5038	2088.55	0.98692	1.0197	33.51	402.1	29.53	750.0	1

STRAINERS & SEPARATORS INFO



Pipeline Strainers

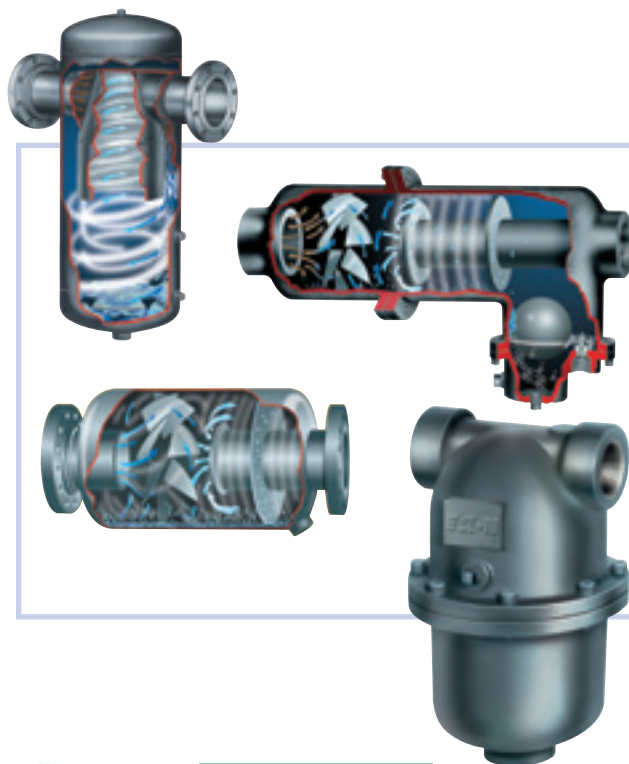
Eaton has been manufacturing quality pipeline strainers for over 75 years. Our dedication to excellence has earned us the confidence of thousands of users all over the world. Eaton pipeline strainers have led the way with designs that meet the ever growing and rigorous demands of the process and manufacturing industries, utilities and municipalities.

Eaton is the most complete line of pipeline strainers in the world. From simple 1/2" size Y strainers to 48" pipeline Automatic Self-Cleaning strainers to custom fabricated strainers... There is an Eaton strainer perfect for any straining application. When there is damage causing dirt or debris in liquid pipelines there is an Eaton pipeline strainer to remove it.

Gas/Liquid Separators

The Eaton Gas/Liquid Separators have been the "Industry Standard" for over 100 years. Nobody knows more about gas/liquid separation. Eaton Gas/Liquid Separators are used to remove 99% of damage causing moisture and particulate matter from air, gas and steam pipelines. They protect valuable system components like air compressors and turbines.

There is a wide selection of hundreds of different Eaton Gas/Liquid Separators and when a standard model isn't right for an application, we can work with customers to create a custom fabricated model that fits the application requirements exactly.



filter-technics

Filter-Technics bvba

Adrian Van Roeyenstraat 28- 2070 Zwijndrecht - Belgium

Phone : +32 32540567 - Fax : +32 32540495

info@filter-technics.be - www.filter-technics.be

