

Work SHELTER

designed and constructed
by Ark-Shelter

Work SHELTER

increase your focus, improve your productivity

www.ark-shelter.com

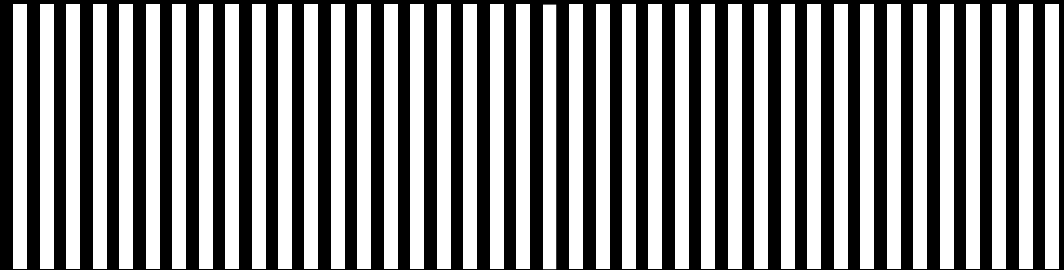
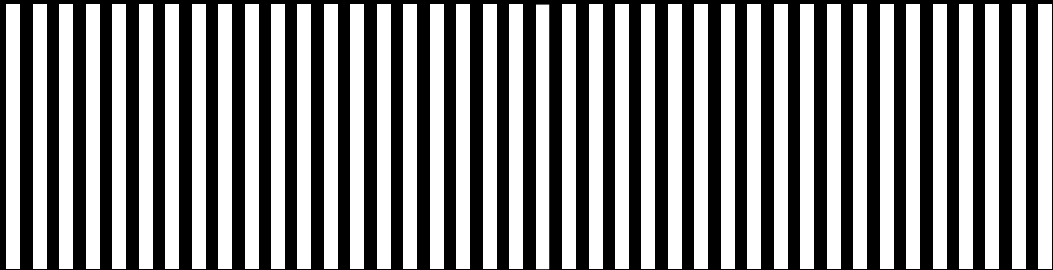
■ Perks of Ark

□ S-helters

▣ M-odular

■ How we work

■ Interested?



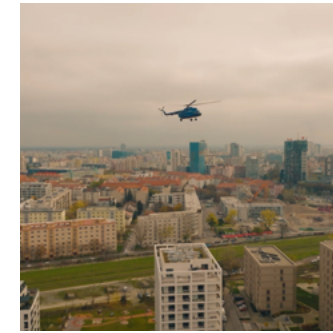
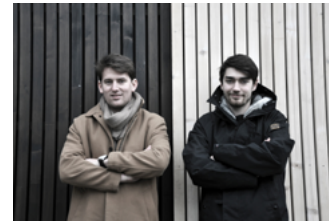
Concentrated creativity

A place to increase your focus, improve your productivity and spark your creativity. With an Ark-Shelter as an office you'll work in a sophisticated space with minimalistic architecture and a pure interior. Imagine a motivating space, where mental peace allows you to focus all your attention on the work that needs to be done. The combination of clean architecture, natural light and durable elements contribute to a productive and creative workspace. Bring out the best in yourself and your employees.



■ Wow-Shelter

Through the years we've made some different and challenging realizations. From a sauna on skis to a floating restaurant on a lake. A cabin flying high in the sky by helicopter to be installed on a rooftop deck.



■ Perks of Ark

Focus — Enjoy the minimalist design. The fewer stimuli around you, the more you'll focus.

Flexibility — By folding walls and lifting ceilings in your ark, you can create private offices or larger rooms easily.

Adaptability — Your modular building can grow together with your company's needs. Enlarging your Ark office building is as simple as adding new ark modules.

Mobility — If your business needs to relocate, your Ark-Shelter(s) can quickly and easily move from one location to another.

Durability — Quality fire, water and damage resistant materials will last a lifetime. Furthermore repairs and renovations can be done without all the dust nor damage.

Silence — Our thermally and acoustically isolated cabins give peace and quiet. Offices can be acoustically separated from one another, and exterior noises are cancelled.

Bespoke — Quality fire, water and damage resistant materials will last a lifetime. Furthermore repairs and renovations can be done without all the dust nor damage.

Work



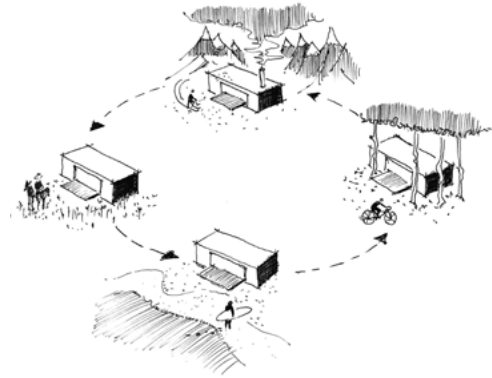
■ Ecologic

Water retention in the country — 30cm thick the green roof of substrate with a hydroaccumulation layer can catch impact rains, unlike ordinary sloping or flat roofs.

Multiplication of the country 's habitat area — the combination of a green roof with the installation of the object on pillars to levitate over the untouched landscape doubles the area of the landscape habitat.

Maintaining the natural climate of the forest environment — the green roof, wooden facades and ventilated soil under the building absorb heat during hot days, water during heavy rains and then gradually release into the environment, similar to the habitat of forests and meadows of the surrounding landscape.

Material fusion with the landscape — wooden facades made of vertical black slats merge with the trunks of the tree line surrounding the forest. Close contact with the forest evokes the atmosphere when the treetops above the buildings are formed by imaginary saddle roofs, this phenomenon is also manifested when viewed from the interior through the glazed parts of the roofs when the treetops are formed by exposed structures of vaults and trusses.



■ Prefabricated

Minimization of tree felling — due to the fact that the modules are finally manufactured in the factory, they can be planted as cells exactly between the tree trunks on pre-prepared ground screws, so there is no risk of breaking the root systems or trunks and the buildings come into closer contact with the forest.

Minimization of construction traffic and waste — the finished modules are mounted on the ground screws by means of a crane within one day, which, even with the preparation of the ground screws, reduces the construction process with one week. In contrast to standard masonry construction, which lasts X months and, in addition to noise, also leaves construction waste after concreting or waste from individual building materials, our method of construction is far more liberating for the surrounding landscape.

Local materials and economy — cabins are a Slovak product made from ecological materials in order to support the Slovak economy.



□ S-helters

Single Cabins

wide

3 m 3,5 m 4 m 4,5 m

maximum length

13,5 m

▣ M-odular

Combination of multiple cabins together

■ Ideal for

Modular Office Buildings

Home offices

Retail stores

Showrooms

Ateliers



□ S-shelters

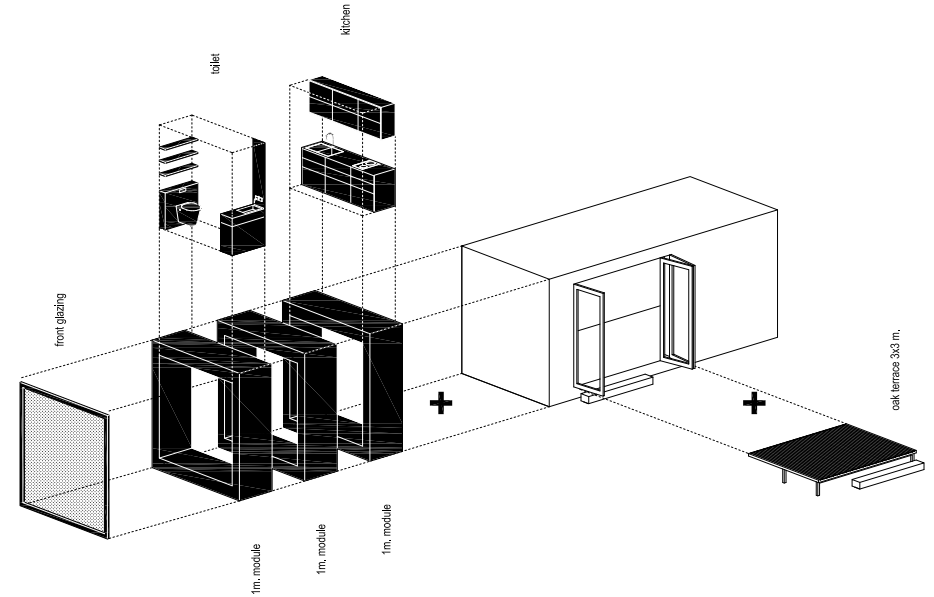
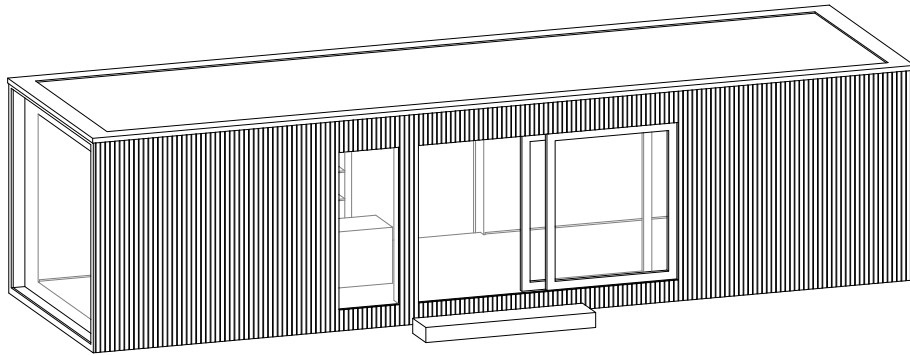
Cabins

wide

3 m 3,5 m 4 m 4,5 m

maximum length

13,5 m



Ark-Shelter gives you a fast, flexible and practical mobile office space solution. Our modular building process allows us to shape your office along your needs and requirements. We guide you through the design process, ensuring the result ticks all the boxes.

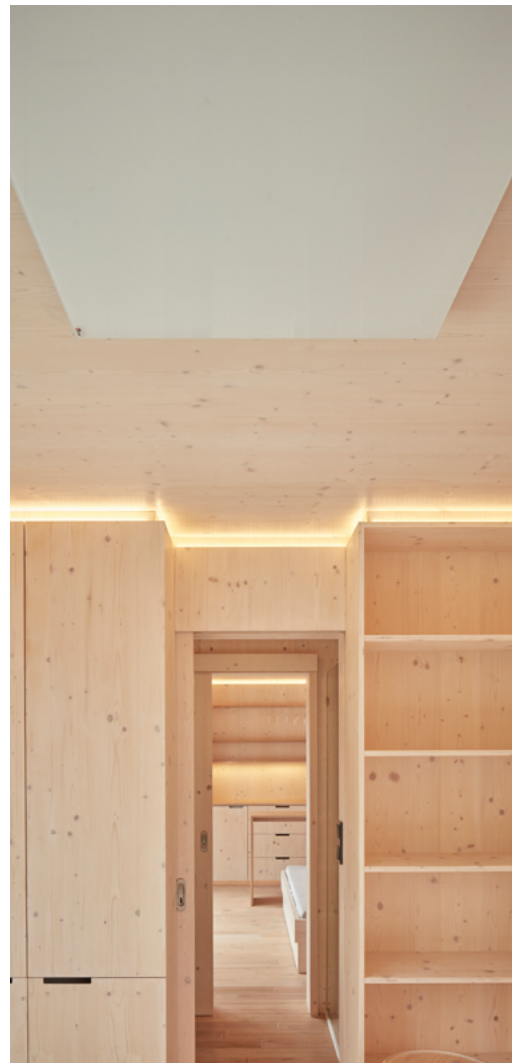


□ Roof Office foto ©Sam De Backer



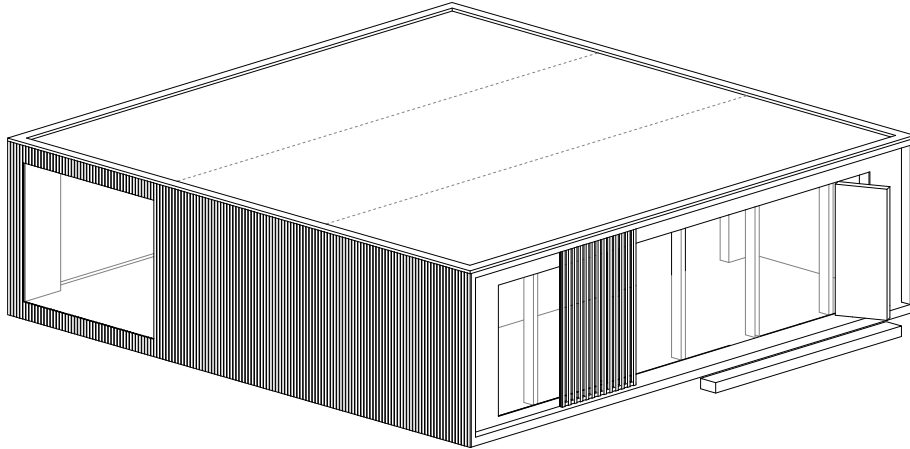


□ Garden office foto ©BoysPlayNice



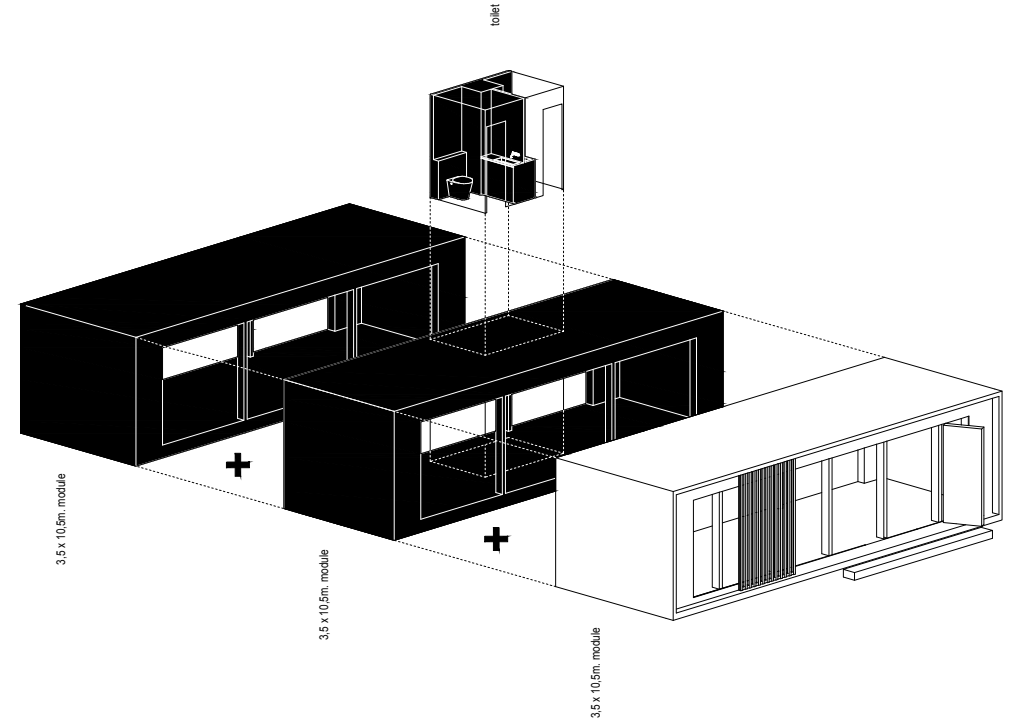
田 M-odular

Combination of multiple modules together



Modular offices can be used as an extension of an existing building, placed on a roof or used as a solo building. Due to the sophisticated modular design, the prefabricated cabins can either be used as individual offices or can be combined into modular buildings. The streamlined production and easy assembly guarantee fast on-site installation, which saves

time and money. The modular cabins are available in nearly all sizes and compositions. Modularity also means that when your company grows, the building can easily grow along, and when the company moves, the building can move with you. Utter freedom!





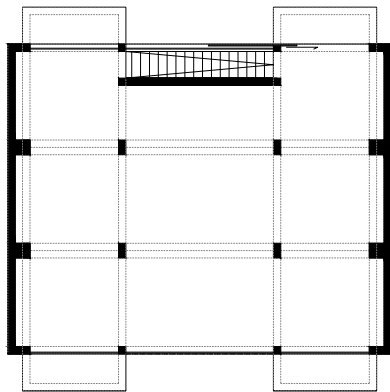
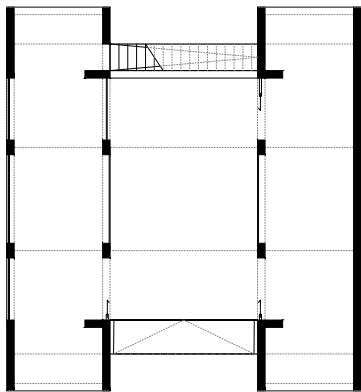
田 Sky box foto ©BoysPlayNice





田GAP foto ©BoysPlayNice





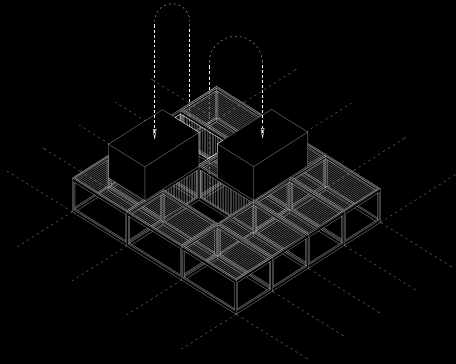
■ The way we work

We find out your needs, design multiple variations with 3D renders and we present you the project with the full budget.



01

Let's get to know each other — We are interested to hear about your project and ideas! Explain us what you imagine and we will show how we can use our modular building system, to help you realize your vision.



02

We go in a design phase — We start drawing, in close dialogue with you. We take your ideas and turn these into a plan with renders and detailed drawings. Once satisfactory we will calculate the detailed building budget. Due to our controlled and streamlined production process the budget is in tighter control than through regular building.



03

Let's build and place — Once we start manufacturing your vision, our dialogue will rapidly accelerate. You can see your dream growing. Once it's ready we deliver it and install it at your desired location.

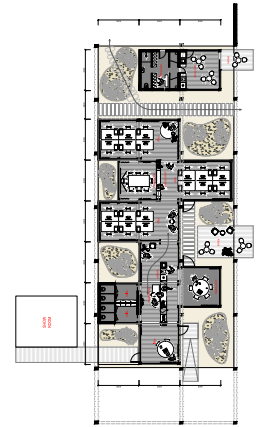
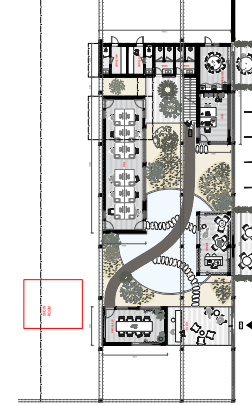
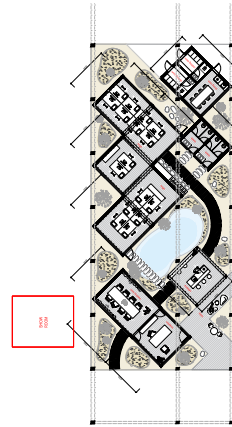


04

Change your projects — Whenever you feel the necessity of change or any evolution; contact us and we will show you several options on how your building can easily transform.

■ Examples

Assisting you and your architects from the very beginning, is what we love. Together we can design a modular building that surpasses your desires. To succeed in business you need to be creative, fresh, driven, have a defined identity and your modular Ark office building will exhale all these qualities.

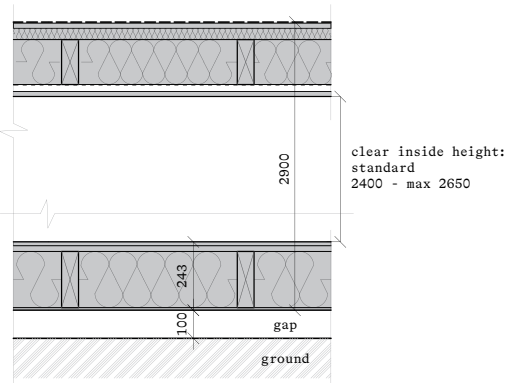


☒ Composition of cabin structures

Roof & Floor

Basic

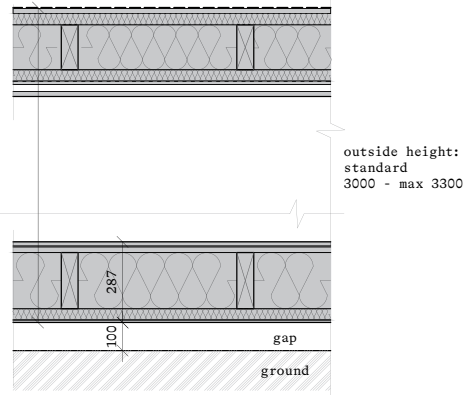
- hydroinsulation TPO foil / flagon/
- OSB board / 18 mm / hydroponic OSB
- levelling framing + thermal insulation, mineral rockwool boards in the slope 20-100 mm
- construction timber / height 160 mm / + thermal insulation, mineral rockwool boards / rockmin plus 160 mm /
- double tape Rothoblaas Double Band
- reflective foil delta Rothoblaas BARRIER ALU NET SD150 or DÖRKEN
- sealing tape Rothoblaas Nail plaster Gemini
- timber framing / 25 mm / for instalation wiring
- bioplate - wooden cladding / 18 mm /



- OAK floor / 14 mm / or VINYL floor / 6,5 mm /
- OSB board / 22 mm /
- construction timber / height 200 mm / + thermal insulation, mineral rockwool boards / 200 mm /
- watherproof plywood board / 9 mm /

Plus

- hydroinsulation TPO foil / flagon/
- OSB board / 18 mm / hydroponic OSB
- levelling framing + thermal insulation, mineral rockwool boards in the slope 20-100 mm
- construction timber / height 160 mm / + thermal insulation, mineral rockwool boards / rockmin plus 160 mm /
- double tape Rothoblaas Double Band
- reflective foil delta Rothoblaas BARRIER ALU NET SD150 or DÖRKEN
- sealing tape Rothoblaas Nail plaster Gemini
- timber framing / 25 mm / for instalation wiring
- bioplate - wooden cladding / 18 mm /

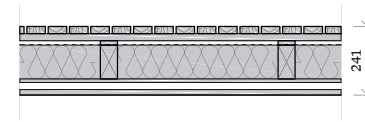


- OAK floor / 14 mm / or VINYL floor / 6,5 mm /
- OSB board / 22 mm /
- construction timber / height 200 mm / + thermal insulation, mineral rockwool boards / 200 mm /
- extra thermal insulation, mineral rockwool boards / 40 mm /
- watherproof plywood board / 9 mm /

Wall

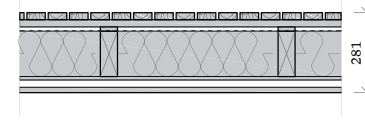
Basic

- thermowood or impregnated spruce facade / 25 mm / - slats 60 x 25 mm
- cross netting / impregnated spruce 25 mm / - battens 60 x 25 mm
- vertical netting / impregnated spruce 15 mm / - battens 60 x 15 mm
- black facade foil / DÖRKEN - DELTA®-FASSADE PLUS, diffuse / or Rothoblaas
- construction timber / 120 x 60 mm / + thermal insulation, mineral rockwool boards / rockmin, 120 mm /
- OSB / 12 mm / glued and taped to make a moisture membrane
- timber framing / 25 mm / - battens 60 x 25 mm
- bioplate - wooden cladding / 18 mm /



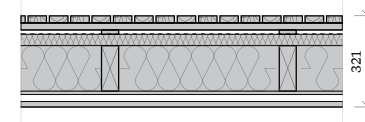
Standard

- thermowood or impregnated spruce facade / 25 mm / - slats 60 x 25 mm
- cross netting / impregnated spruce 25 mm / - battens 60 x 25 mm
- vertical netting / impregnated spruce 15 mm / - battens 60 x 15 mm
- black facade foil / DÖRKEN - DELTA®-FASSADE PLUS, diffuse / or Rothoblaas
- construction timber / 160 x 60 mm / + thermal insulation, mineral rockwool boards / rockmin, 160 mm /
- OSB / 12 mm / glued and taped to make a moisture membrane
- timber framing / 25 mm / - battens 60 x 25 mm
- bioplate - wooden cladding / 18 mm /



Plus

- thermowood or impregnated spruce facade / 25 mm / - slats 60 x 25 mm
- cross netting / impregnated spruce 25 mm / - battens 60 x 25 mm
- vertical netting / impregnated spruce 15 mm / - battens 60 x 15 mm
- black facade foil / DÖRKEN - DELTA®-FASSADE PLUS, diffuse / or Rothoblaas
- extra thermal insulation, mineral rockwool boards / 40 mm / in horizontal direction
- construction timber / 160 x 60 mm / + thermal insulation, mineral rockwool boards / rockmin, 160 mm /
- OSB / 12 mm / glued and taped to make a moisture membrane
- timber framing / 25 mm / - battens 60 x 25 mm
- bioplate - wooden cladding / 18 mm /



* fireproof regulations are individual case by each country

FAQ

What can you expect?

Ark-Shelter's obligations are to make our products available to the user for the duration of the agreement; or to deliver upon sale. It is transported and installed by Ark-Shelter, and also removed again if necessary. This kind of residential solution has no lasting impact for the place where it is located. Ark-Shelter can provide further adaptation of access to the unit, e.g. by means of a ramp. The provision of necessary piping and connections is done by a subcontractor on Ark-Shelter's instructions and is carried out in consultation with the owner.

How long do I have to wait?

Depending on production pressure, we can deliver and install the unit within 3 months. Installation usually takes no longer than 6 hours per unit. While the permit is being applied for, production is started. The foundation screws are placed just before arrival of the unit.

Where can the unit be placed?

The unit can be placed anywhere provided that the roads to this location are accessible for a trailer and that the crane on site has no obstacles in the turning radius!

Which foundation is used?

The unit is placed on unpaved ground on a screw foundation; the number is determined by the size of the unit. Prefabricated concrete blocks are also an option.

How is the installation done?

An Ark arrives on a truck and is then placed in its proper place by crane.

Can the Shelter be easily removed again?

An Ark stands about 5-10 cm off the ground (insulation reasons) and is not attached to the foundation. This means that the unit can be very easily picked up and moved again.

Where are the Arks built?

Arks are built in Slovakia and then transported to their destination.

How much is the transportation cost?

The transportation cost depends on the size, but especially the width of the Ark.

How is an Ark built?

The structure of the Ark is a modular wooden frame construction. This means that single units are possible, as well as larger structures by several units linked together or stacked on top of each other.

Is the construction process sustainable?

We work with Slovak indigenous wood species; an important local resource. Our suppliers must all have the FSC label, which guarantees us an environmentally responsible approach. In addition, an Ark can be recycled up to 95% when dismantled. Furthermore, thanks to excellent insulation and ventilation, we have very low energy consumption. The combination of these factors, along with a minimal waste production process and energy-efficient appliances, ensures that our carbon footprint with this way of building and living is very limited.

How big can an Ark be?

The width is 3m, 3.5m or 4m and the length can be between 6m and 14m. By linking or stacking several units (up to 5 high) you can create larger spaces.

Can an Ark work without utilities?

The initial idea of Ark Shelter was to create a home that could function off the grid. However, for reasons of required comfort, they are usually hooked up. We have experience in installing solar panels, batteries and rainwater recovery tanks.

Is there any work to be done on site?

An Ark is fully assembled with all components. The only things that will be installed on site are a possible terrace and/or fireplace.

How will the Ark be connected to water and electricity?

A simple electricity cable can be connected to the Ark. Water supply and drainage is done by connecting to the existing sewage system; if there is no sewage system, a septic tank can be used.

What type of heating is used?

Heating is provided by default via infrared panels because of their low consumption and high efficiency. For custom applications, a fireplace can also be provided. For large projects, we rely on alternative forms of heating. We prefer to work with air-to-air heat pumps because they can also cool in the warmer summer months and thus always guarantee an optimal indoor climate.

What are the costs associated with a unit?

Initially, you have the rental price or the sales price, this is a one-time cost plus the installation cost (crane, foundation, delivery, utilities, crew etc.).

What is included in the price?

The unit arrives fully assembled on a transport; which ensures quick installation. This unit is equipped with all appliances for heating, refrigerator, combination oven, stove, etc. This is something that some other providers do not include.

What procedures should be followed?

If you are interested in an Ark-Shelter; we will gladly send you an overview of the possibilities. Afterwards, we take care of a quick delivery and placement of the unit as well as coordination of the necessary connections. Furthermore, we also take care of the necessary permits, as the conditions vary from one municipality to another. If the unit needs to be moved, Ark-Shelter will pick it up, including the foundation screws, without any permanent or visible damage. *Warranty is void if a party not appointed by Ark-Shelter moves the unit.

What service do we offer?

Ark-Shelter's residential solutions have a very long service life. We have a team ready at all times to carry out any repairs and with a non-binding annual inspection of all essential points, we guarantee smooth operation of the unit and its accessories.

Where do you deliver?

Arks can be placed anywhere, but at present we supply and place our modular timber frame units only in Europe.

■ Interested?

Find your place, point your finger where you want it.

call **+32 472 784 510**
write **info@arkshelter.com**



BIG SEE
Wood Design
Award 2023
Winner



BIGSEE
ARCHITECTURE
AWARD 2022
WINNER

BIGSEE
WOODDESIGN
AWARD 2022
WINNER



reddot winner 2020



BIGSEE
ARCHITECTURE
AWARD 2019
WINNER



Work

