

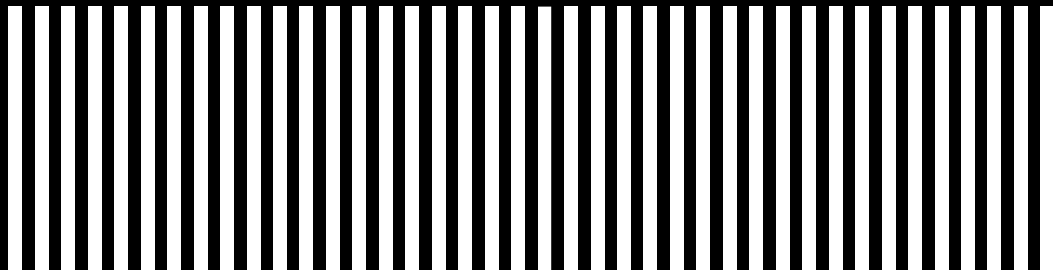
# ARK SHELTER

designed and constructed  
by Ark-Shelter

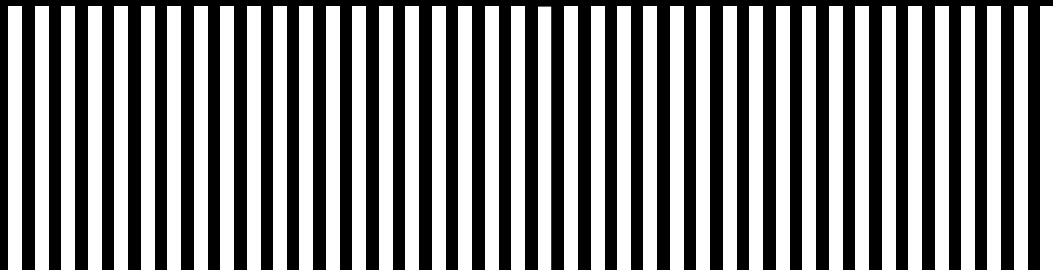
# ARK SHELTER

modular architecture

[www.ark-shelter.com](http://www.ark-shelter.com)

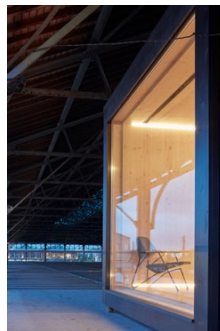


- Perks of Ark
- S-helters
- ▣ M-odular
- ⊞ Cabin cluster
- How we work
- Interested?

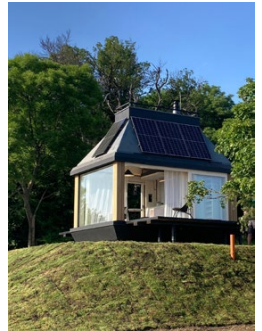
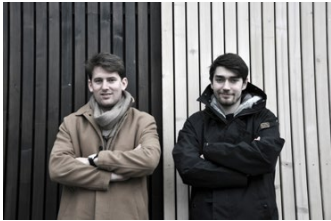


# ■ Wow-Shelter

Through the years we've made some different and challenging realizations. From a sauna on skis to a floating restaurant on a lake. A cabin flying high in the sky by helicopter to be installed on a rooftop deck.







# ■ Perks of Ark

**Designed to relax & inspire** — Ark-Shelter shows the beauty of natural light and allows you to reconnect with nature. The modern design and large, single pane, windows seamlessly integrate the natural environment within your Ark. This leads to inspiration or lets you take the time to unwind.

**Sustainable** — We use FSC-labeled wood, have a minimal waste policy, continuously reduce the carbon footprint of our units and more. Shelters can be built harvesting reusable sources, such as solar power and rainwater. The shelters are placed on ground screws that leave nature untouched.

**Flexible** — With their easy-to-move structure, Ark-Shelters offer ultimate flexibility regardless of their application, from pool houses for families to modular centers for healthcare companies. Get the most out of your investment with our versatile solutions that can move and grow with you.

**Efficient** — Our fully equipped workshops ensure short production times. Our finished products come with everything needed and are ready to be placed and connected in just one working day. With minimal on-site work required, our units provide maximum efficiency.

**Durable** — Our handcrafted shelters are built to last for decades, with a durable wooden shell that can withstand any conditions. And when you feel the need to update your Ark to match your evolving aesthetic desires, know that refurbishing is a breeze.

**Intelligent** — Arks can be equipped with numerous popular smart home automation technologies in order to meet the demands of our time, enabling you to control your ark from your smartphone and keep you focused on what really matters.

# Ark





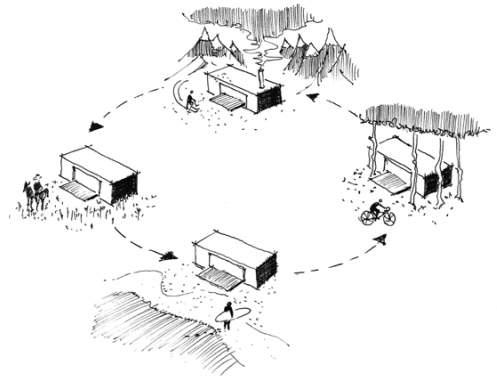
# ■ Ecologic

**Water retention in the country** — 30cm thick the green roof of substrate with a hydroaccumulation layer can catch impact rains, unlike ordinary sloping or flat roofs.

**Multiplication of the country 's habitat area** — the combination of a green roof with the installation of the object on pillars to levitate over the untouched landscape doubles the area of the landscape habitat.

**Maintaining the natural climate of the forest environment** — the green roof, wooden facades and ventilated soil under the building absorb heat during hot days, water during heavy rains and then gradually release into the environment, similar to the habitat of forests and meadows of the surrounding landscape.

**Material fusion with the landscape** — wooden facades made of vertical black slats merge with the trunks of the tree line surrounding the forest. Close contact with the forest evokes the atmosphere when the treetops above the buildings are formed by imaginary saddle roofs, this phenomenon is also manifested when viewed from the interior through the glazed parts of the roofs when the treetops are formed by exposed structures of vaults and trusses.



# ■ Prefabricated

**Minimization of tree felling** — due to the fact that the modules are finally manufactured in the factory, they can be planted as cells exactly between the tree trunks on pre-prepared ground screws, so there is no risk of breaking the root systems or trunks and the buildings come into closer contact with the forest.

## **Minimization of construction traffic and waste**

— the finished modules are mounted on the ground screws by means of a crane within one day, which, even with the preparation of the ground screws, reduces the construction process with one week. In contrast to standard masonry construction, which lasts X months and, in addition to noise, also leaves construction waste after concreting or waste from individual building materials, our method of construction is far more liberating for the surrounding landscape.

**Local materials and economy** — cabins are a Slovak product made from ecological materials in order to support the Slovak economy.



**Find your place, point your finger  
where you want it.**





# □ Shelters

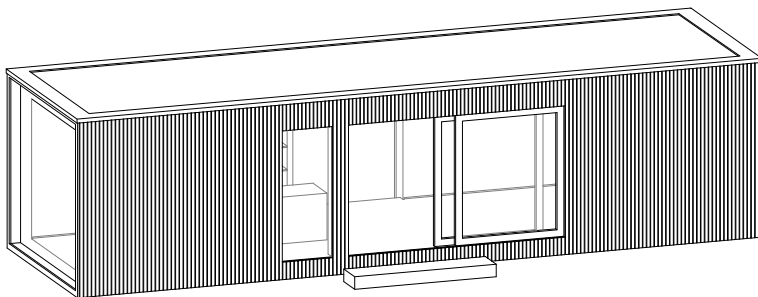
## Single Cabins

wide

3 m 3,5 m 4 m 4,5 m

maximum length

13,5 m

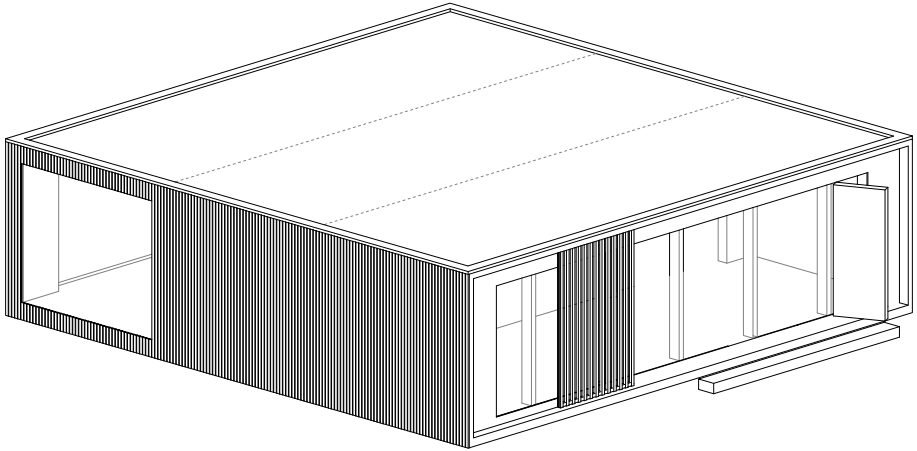


**Our portfolio ranges from single, independent cabins, to complex modular buildings.**



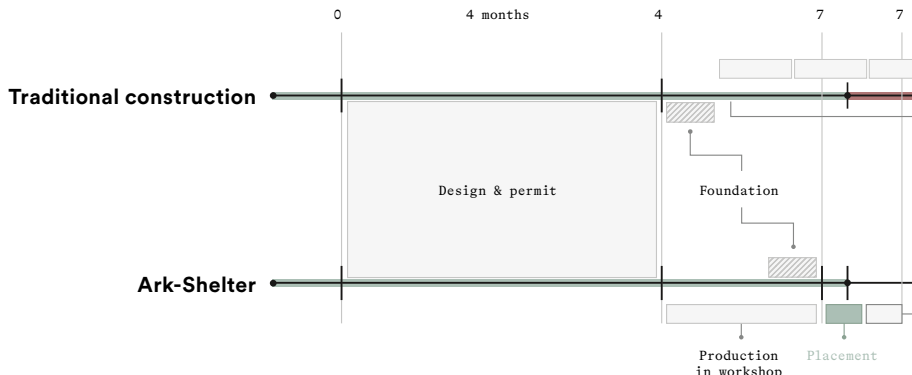
# 田 M-odular

Combination of multiple modules together



**These large structures are created effortlessly by combining several smaller modules together.**

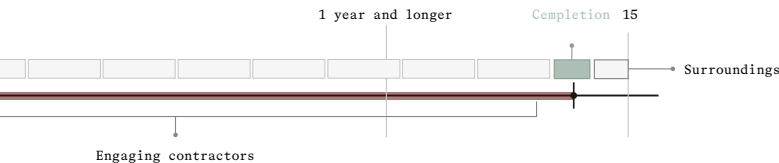
# □ Shelters



Our single shelters are all about living, relaxing, working simply, beautifully and yet still with everything you need. It's about freedom and having the economic freedom to live a bigger life, instead of having a bigger house. They contain a living area, bed room, kitchen and bathroom or any different spaces you need. The complete Shelter is constructed in the factory, with all the techniques and furniture pre-installed. We load the finished cabin on a truck at our factory and the cabin is ready to depart for the destination. As the foundations are already prepared in advance the installation is just a matter

of a few hours. Connect the electricity, water and sewage easily by a plug and play system. It is possible to build these homes to be entirely self-contained and off-grid, generating their own water and electricity. Characteristic of these buildings are the large windows that ensure maximum outdoor experience and optimum light intensity.

# 田 M-modular



→ Surroundings

Freedom in the scale of the building is found once we start connecting multiple modules together. Not just next to each other but also above each other even till 3 floors high, without needing external support. By connecting several units together we can create larger spaces such as family houses, kindergartens, hospitality buildings, offices, larger apartment blocks or hotels. The modules are, like the shelter, made inside the factory in optimal conditions, and connected to test these connections. This to minimize the need for on site improvisation. After this they are ready for transport. Depending on the complexity

of the building we need several hours or some days to install the units by crane. The average speed of installation per unit is around one hour. Our biggest competitive advantage is that we deliver the units completely finished with technical installation, claddings and built in furniture, which radically minimizes the on-site work. This gives us a great advantage in speed and cost efficiency, very much to the liking of our clients.

# ■ Purposes of use

We are architects, redesigning life, in a stress-charged world, disconnected from natural rhythm due to societal pressure and technology. The fast-paced society today is entrapped in an endless cycle of stress, driven by pressure, deadlines, artificial timeframes, and technology. This disconnection from our biological instincts is alarming, prompting us to find an escape route to return to our roots. Our solution is the Ark-Shelter, a haven reconnecting you with nature and your biological rhythm. Initially, the Ark was a serene retreat from technology, a quiet space to appreciate nature and one's self. We soon recognized the need to create homes attuned to human biorhythms. Adaptable to life's stages, our designs transform with folding sides, harmonizing with the landscape and extending nature's reach. Arks allow you to re-sync and re-set your natural biorhythm. Fall asleep under stars, awaken with sunrise, and reconnect with nature and yourself. Truly unwind.

This is crucial for modern humans. Since our first Ark in 2015, our approach has evolved. We now see cabins as modular units, placeable anywhere from secluded forests, to urban rooftops and combinable into complex structures serving as homes, offices, and hospitals, elevating our healing space philosophy. We believe that by incorporating nature back into your life, you will find the break you need. That's how Ark-Shelter was born. Ark gives you an escape and a shelter to protect you.

in balance with nature

# Live



increase your focus,  
improve your productivity

# Work



in harmony with space

# Relax



living autonomously next door

# Care



escape it all

# Resort



# □ Shelters

## In to the Wild

changing location 2018











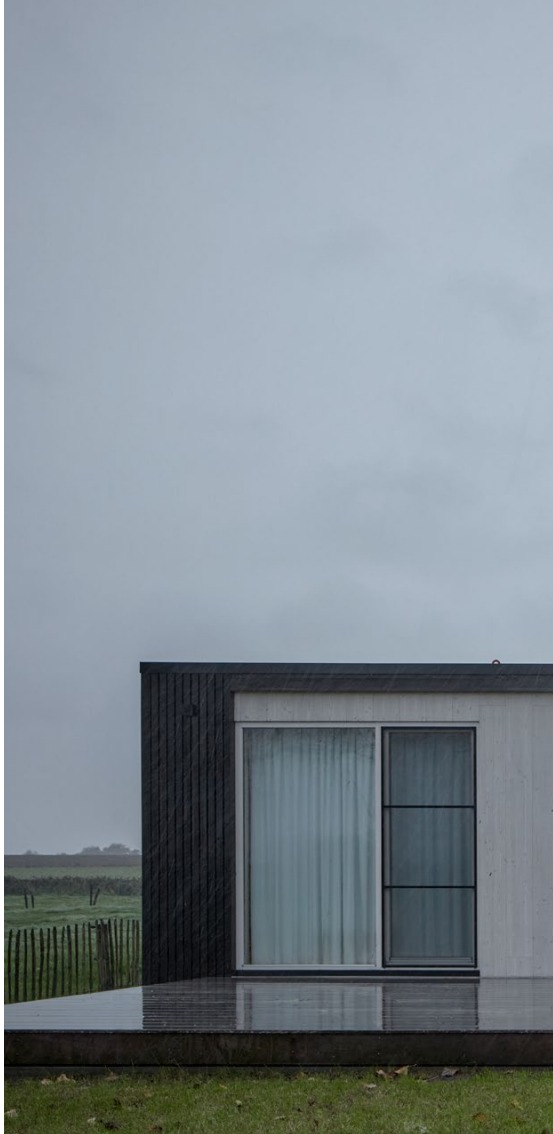
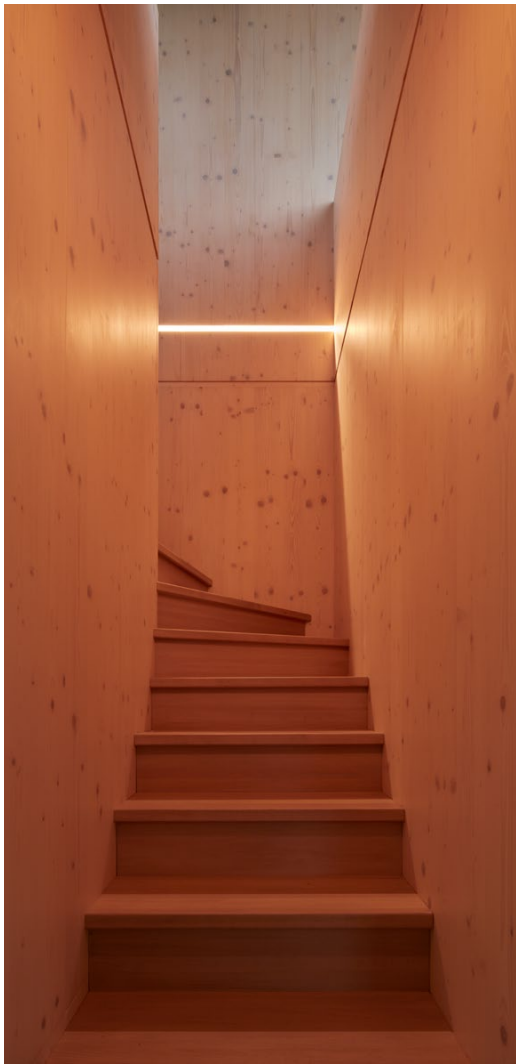
# 田 M-odular

## Ark Family House

Belgium 2020











# □ Shelters

## Roof Office

Belgium 2017





# 田 M-odular

GAP

Belgium 2019













# □ Shelters

## Louis Pavilion

Belgium 2019



■ foto ©Sam De Backer

# Relax











# 田 M-odular

Björnson Wellness

Slovakia 2019



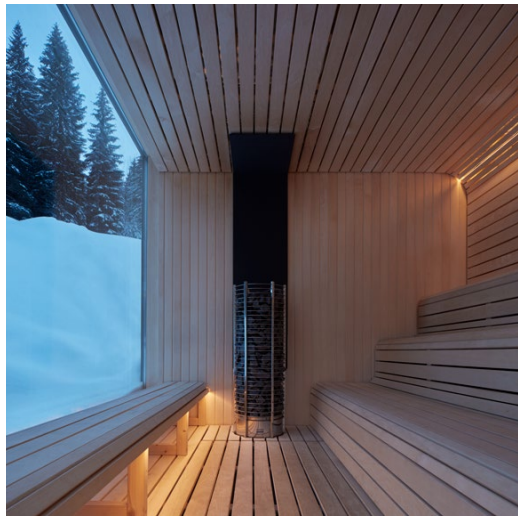
■ foto ©BoysPlayNice

# Relax













# □ Shelters

## Care-Shelter

Belgium 2019



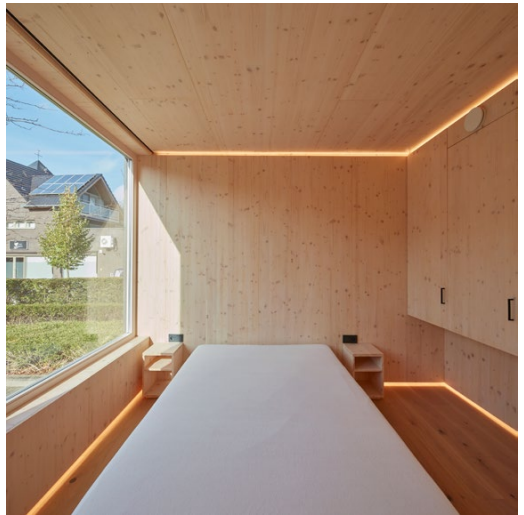
■ foto ©Sam De Backer

Care











# 田 M-odular

Warm Nest

Belgium 2021



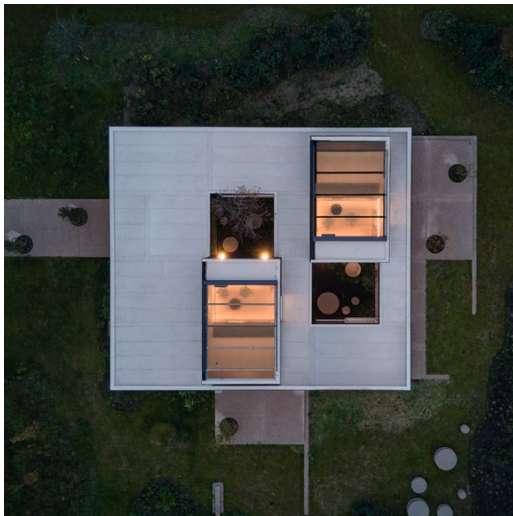
■ foto ©BoysPlayNice

Care













# ■ Cabin cluster

Björnson Ski-Hotel

Single cabins

Slovakia 2019

32 x













# ■ Cabin cluster

Emma Wanderer

Single cabins

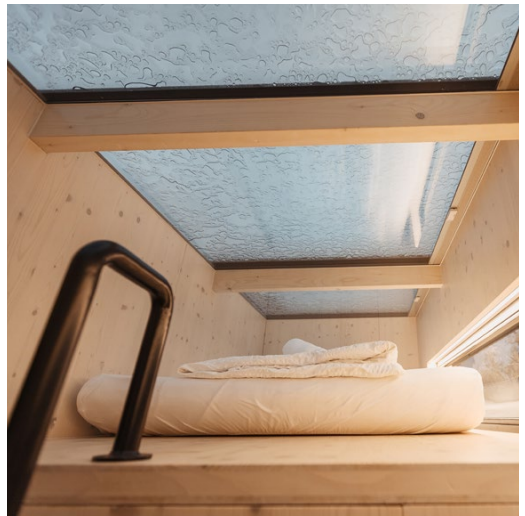
Austria 2023

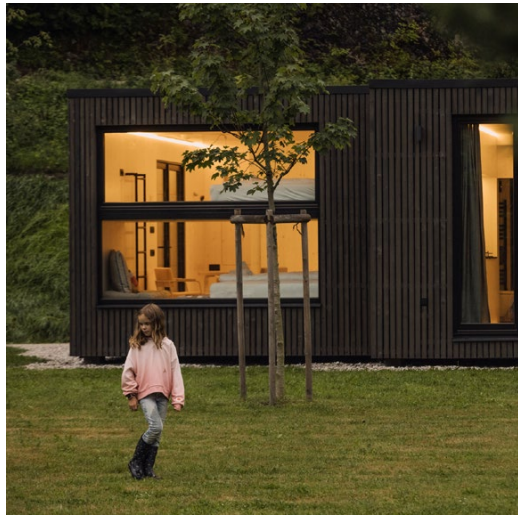
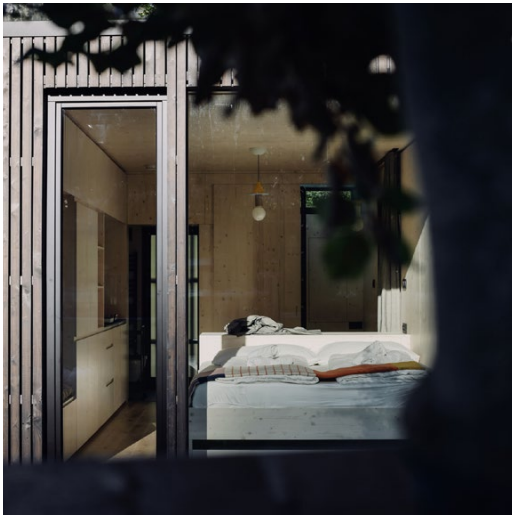
30 x









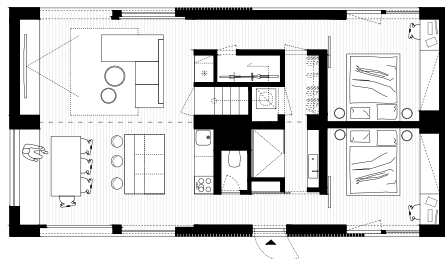
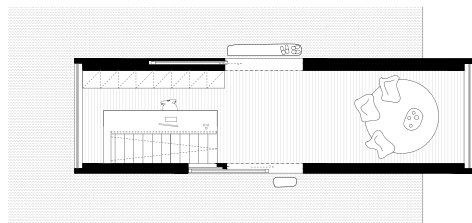
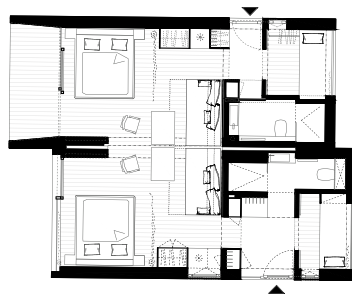
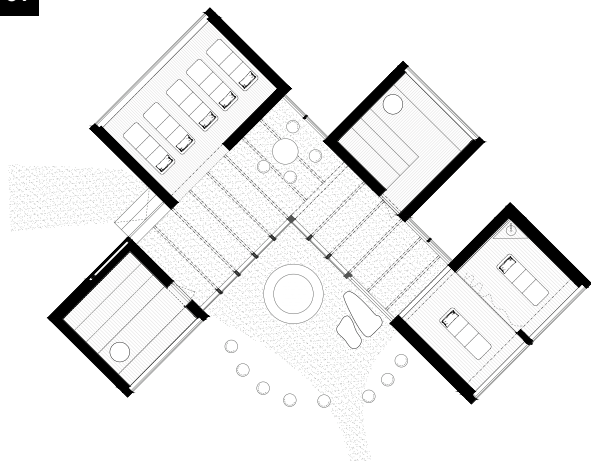


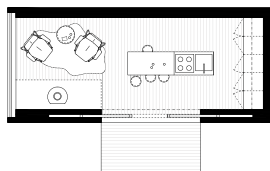
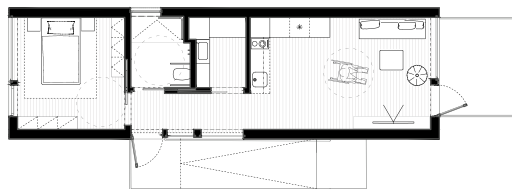
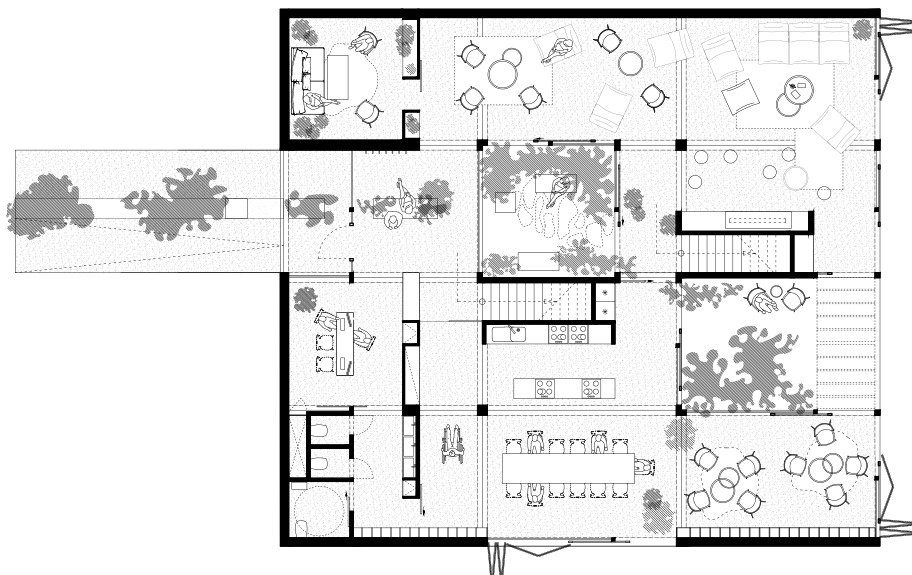
# ■ Floor Plans

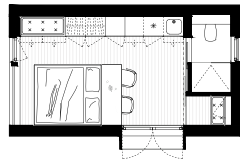
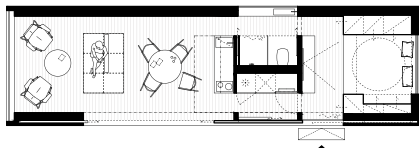
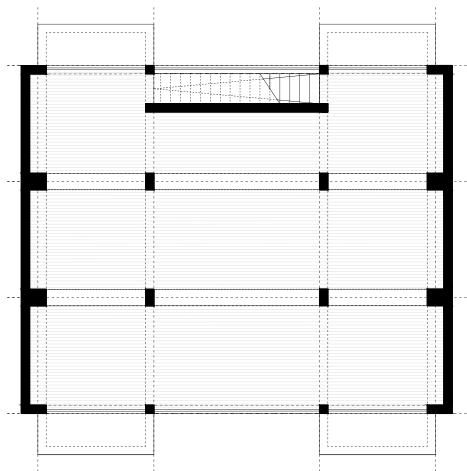
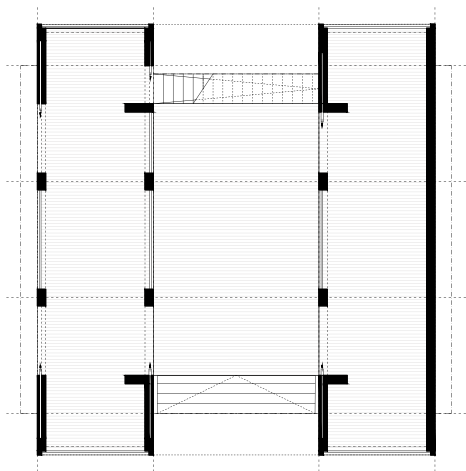
Floorplans of different projects to show the different variations options and possibilities. An inspiration on how to organize live, work or relax activities for your future project.

<u>Björnson Wellness</u>	01
<u>Björnson Ski-Hotel</u>	02
<u>Roof Office</u>	03
<u>Ark Family House</u>	04
<u>Warm Nest</u>	05
<u>Care-Shelter</u>	06
<u>Louis Pavilion</u>	07
<u>GAP</u>	08
<u>In to the Wild</u>	09
<u>Emma Wanderer</u>	10









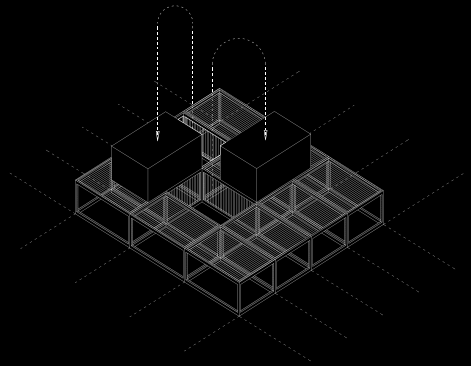
# ■ The way we work

We find out your needs, design multiple variations with 3D renders and we present you the project with a full budget.



01

**Let's get to know each other** — We are interested in hearing about your project and ideas! Explain your imagination to us, and we will show how our modular building system can help to realize your vision.



02

**Let's go designing** — We start drawing, in close dialogue with you. We take your ideas and turn these into a plan with renders and detailed drawings. Once satisfactory we will calculate the detailed building budget. Due to our controlled and streamlined production process the budget is in tighter control than through regular building.






---

03

**Let's build and place** — Once we start manufacturing your vision, our dialogue will rapidly accelerate. You can see your dream growing. Once it's ready, we deliver it and install it at your desired location.




---

04

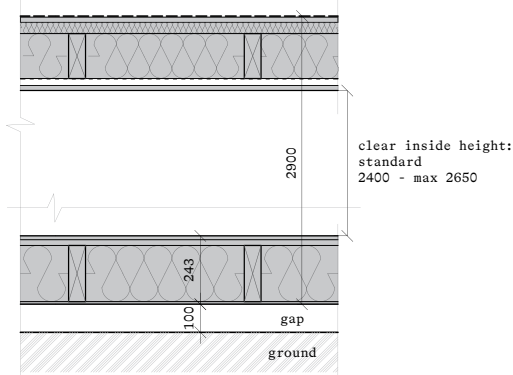
**Change your projects** — Whenever you feel the necessity of change or any evolution; contact us and we will show you several options on how your building can easily transform.

# ■ Composition of cabin structures

## Roof & Floor

### Basic

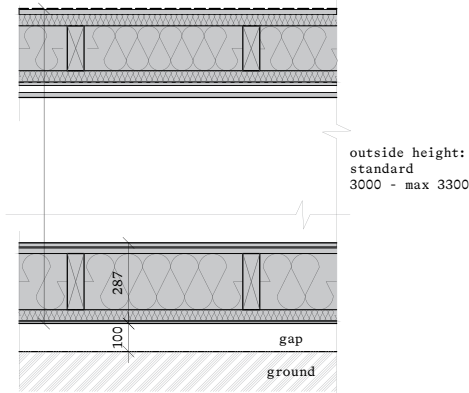
- hydroinsulation TPO foil / flagon/
- OSB board / 18 mm / hydroponic OSB
- levelling framing + thermal insulation, mineral rockwool boards in the slope 20-100 mm
- construction timber / height 160 mm / + thermal insulation, mineral rockwool boards / rockmin plus 160 mm /
- double tape Rothoblaas Double Band
- reflective foil delta Rothoblaas BARRIER ALU NET SD150 or DÖRKEN
- sealing tape Rothoblaas Nail plaster Gemini
- timber framing / 25 mm / for instalation wiring
- bioplate - wooden cladding / 18 mm /



- OAK floor / 14 mm / or VINYL floor / 6,5 mm /
- OSB board / 22 mm /
- construction timber / height 200 mm / + thermal insulation, mineral rockwool boards / 200 mm /
- watherproof plywood board / 9 mm /

### Plus

- hydroinsulation TPO foil / flagon/
- OSB board / 18 mm / hydroponic OSB
- levelling framing + thermal insulation, mineral rockwool boards in the slope 20-100 mm
- construction timber / height 160 mm / + thermal insulation, mineral rockwool boards / rockmin plus 160 mm /
- double tape Rothoblaas Double Band
- reflective foil delta Rothoblaas BARRIER ALU NET SD150 or DÖRKEN
- sealing tape Rothoblaas Nail plaster Gemini
- timber framing / 25 mm / for instalation wiring
- bioplate - wooden cladding / 18 mm /

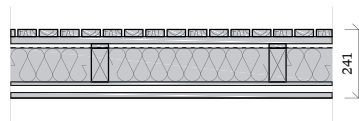


- OAK floor / 14 mm / or VINYL floor / 6,5 mm /
- OSB board / 22 mm /
- construction timber / height 200 mm / + thermal insulation, mineral rockwool boards / 200 mm /
- extra thermal insulation, mineral rockwool boards / 40 mm /
- watherproof plywood board / 9 mm /

# Wall

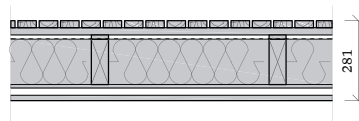
## Basic

- thermowood or impregnated spruce facade / 25 mm / - slats 60 x 25 mm
- cross netting / impregnated spruce 25 mm / - battens 60 x 25 mm
- vertical netting / impregnated spruce 15 mm / - battens 60 x 15 mm
- black facade foil / DÖRKEN - DELTA®-FASSADE PLUS, diffuse / or Rothoblaas
- construction timber / 120 x 60 mm / + thermal insulation, mineral rockwool boards / rockmin, 120 mm /
- OSB / 12 mm / glued and taped to make a moisture membrane
- timber framing / 25 mm / - battens 60 x 25 mm
- bioplate - wooden cladding / 18 mm /



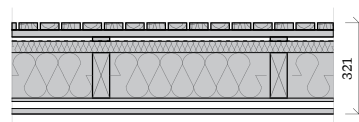
## Standard

- thermowood or impregnated spruce facade / 25 mm / - slats 60 x 25 mm
- cross netting / impregnated spruce 25 mm / - battens 60 x 25 mm
- vertical netting / impregnated spruce 15 mm / - battens 60 x 15 mm
- black facade foil / DÖRKEN - DELTA®-FASSADE PLUS, diffuse / or Rothoblaas
- construction timber / 160 x 60 mm / + thermal insulation, mineral rockwool boards / rockmin, 160 mm /
- OSB / 12 mm / glued and taped to make a moisture membrane
- timber framing / 25 mm / - battens 60 x 25 mm
- bioplate - wooden cladding / 18 mm /



## Plus

- thermowood or impregnated spruce facade / 25 mm / - slats 60 x 25 mm
- cross netting / impregnated spruce 25 mm / - battens 60 x 25 mm
- vertical netting / impregnated spruce 15 mm / - battens 60 x 15 mm
- black facade foil / DÖRKEN - DELTA®-FASSADE PLUS, diffuse / or Rothoblaas
- extra thermal insulation, mineral rockwool boards / 40 mm / in horizontal direction
- construction timber / 160 x 60 mm / + thermal insulation, mineral rockwool boards / rockmin, 160 mm /
- OSB / 12 mm / glued and taped to make a moisture membrane
- timber framing / 25 mm / - battens 60 x 25 mm
- bioplate - wooden cladding / 18 mm /



\* fireproof regulations are individual case by each country

# FAQ

## What can you expect?

Ark-Shelter's obligations are to make our products available to the user for the duration of the agreement; or to deliver upon sale. It is transported and installed by Ark-Shelter, and also removed again if necessary. This kind of residential solution has no lasting impact for the place where it is located. Ark-Shelter can provide further adaptation of access to the unit, e.g. by means of a ramp. The provision of necessary piping and connections is done by a subcontractor on Ark-Shelter's instructions and is carried out in consultation with the owner.

## How long do I have to wait?

Depending on production pressure, we can deliver and install the unit within 3 months. Installation usually takes no longer than 6 hours per unit. While the permit is being applied for, production is started. The foundation screws are placed just before arrival of the unit.

## Where can the unit be placed?

The unit can be placed anywhere provided that the roads to this location are accessible for a trailer and that the crane on site has no obstacles in the turning radius!

## Which foundation is used?

The unit is placed on unpaved ground on a screw foundation; the number is determined by the size of the unit. Prefabricated concrete blocks are also an option.

## How is the installation done?

An Ark arrives by truck and is then placed in its proper place by crane.

## Can the Shelter be easily removed again?

An Ark stands about 5-10 cm off the ground (insulation reasons) and is not attached to the foundation. This means that the unit can be very easily picked up and moved again.

## Where are the Arks built?

Arks are built in Slovakia and then transported to their destination.

## How much is the transportation cost?

The transportation cost depends on the size, but especially the width of the Ark.

## How is an Ark built?

The structure of the Ark is modular timber frame construction. This means that single units are possible, as well as larger structures by linking several units together or stacked on top of each other.

## Is the construction process sustainable?

We work with Slovak indigenous wood species; an important local resource. Our suppliers must all have the FSC label, which guarantees us an environmentally responsible approach. In addition, an Ark can be recycled up to 95% when dismantled. Furthermore, thanks to excellent insulation and ventilation, we have very low energy consumption. The combination of these factors, along with a minimal waste production process and energy-efficient appliances, ensures that our carbon footprint with this way of building and living is very limited.

## How big can an Ark be?

The width is 3m, 3.5m or 4m and the length can be between 6m and 14m. By linking or stacking several units (up to 5 high) you can create larger spaces.

## Can an Ark work without utilities?

The initial idea of Ark Shelter was to create a home that could function off the grid. However, for reasons of required comfort, they are usually hooked up. We have experience in installing solar panels, batteries and rainwater recovery tanks.



### **Is there any work to be done on site?**

An Ark is fully assembled with all components. The only things that will be installed on site are the connecting the utilities, and installing a possible terrace or fireplace.

### **How will the Ark be connected to water and electricity?**

A simple electricity cable can be connected to the Ark. Water supply and drainage is done by connecting to the existing sewage system; if there is no sewage system, a septic tank can be used.

### **What type of heating is used?**

By default, heating is provided via infrared panels because of their low consumption and high efficiency. For custom applications, a fireplace can also be provided. For large projects, we rely on alternative forms of heating. We prefer to work with air-to-air heat pumps because they can also cool in the warmer summer months and thus always guarantee an optimal indoor climate.

### **What are the costs associated with a unit?**

Initially, you have the rental price or the sales price, this is a one-time cost plus the installation cost (crane, foundation, delivery, utilities, crew).

### **What is included in the price?**

The unit arrives fully assembled which ensures quick installation. This unit is equipped with all appliances and techniques preinstalled e.g. heating, refrigerator, combi oven, cooking hub etc. This is something that some other providers do not include.

### **What procedures should be followed?**

If you are interested in an Ark-Shelter; we will gladly send you an overview of the possibilities. Afterwards, we take care of a quick delivery and placement of the unit as well as coordination of the necessary connections. Furthermore, we also take care of the necessary permits, as the conditions vary from one municipality to another. If the unit needs to be moved, Ark-Shelter will pick it up, including the foundation screws, without any permanent or visible damage. \*Warranty is void if a party not appointed by Ark-Shelter moves the unit.

### **What service do we offer?**

Ark-Shelter's residential solutions have a very long lifespan. We have a team ready at all times to carry out any repairs and with a non-binding annual inspection of all essential points, we guarantee smooth operation of the unit and its accessories.

### **Where do you deliver?**

Arks can be placed anywhere, but at present we supply and place our modular timber frame units only in Europe.

# ■ Your ideas for your custom design





# ■ Interested?

Find your place, point your finger where you want it.

call **+32 472 784 510**  
write **info@ark-shelter.com**



**BIG SEE**  
**Wood Design**  
**Award 2023**  
Winner



**BIGSEE**  
**ARCHITECTURE**  
**AWARD 2022**  
WINNER

**BIGSEE**  
**WOODDESIGN**  
**AWARD 2022**  
WINNER



reddot winner 2020



**BIGSEE**  
**ARCHITECTURE**  
**AWARD 2019**  
WINNER



# Ark

