

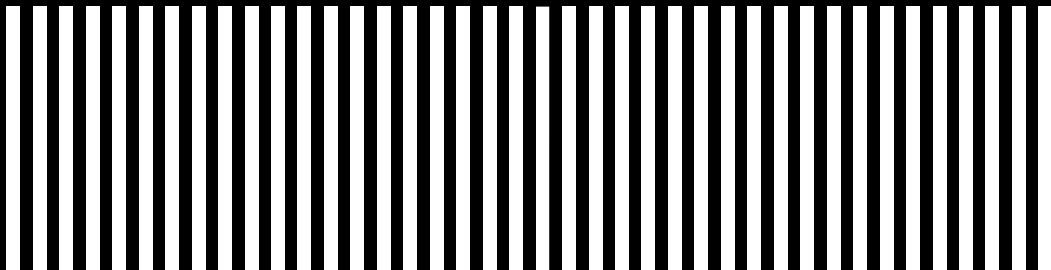
Live SHELTER

designed and constructed
by Ark-Shelter

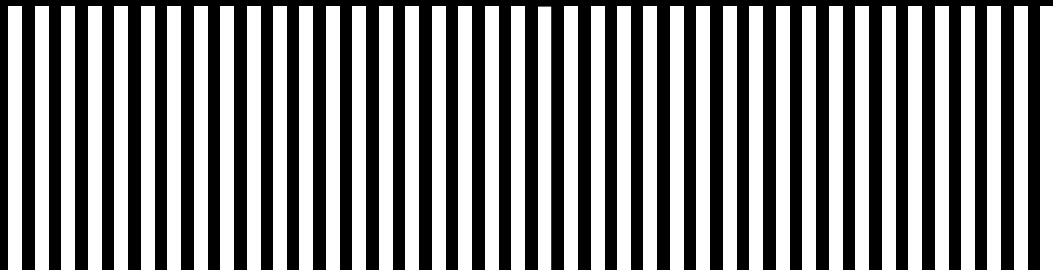
Live SHELTER

in balance with nature

www.ark-shelter.com



- Perks of Ark
- S-helters
- ▣ M-odular
- How we work
- Interested?



Bring nature to you

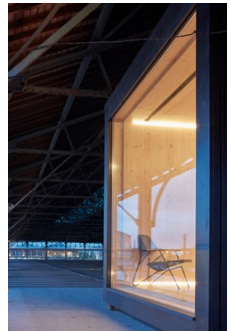
Ark-Shelter wants to go back to the basics by proving a living place within nature. Ark's mobile and zero impact design allows you to change destinations while leaving nature untouched. The minimalist design blends with the landscape, letting you enjoy nature by becoming part of it. The small impact minimizes our environmental footprint, reduces the amount of required resources, and encourages us to consume less in general. They let us move towards a more simplistic way of life and open up the possibility for a more sustainable future. Ark's are ideal as a home building solution as the production process is perfectly streamlined, ensuring your project is realised faster than through traditional building and with complete control of the budget. Your Ark home can grow and shrink based on your evolving needs and is extremely energy efficient.

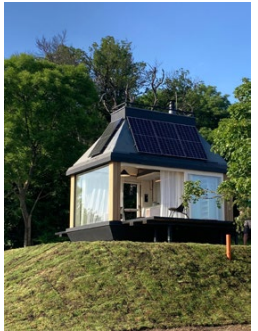
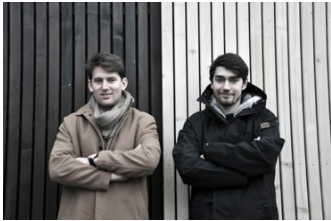




■ Wow-Shelter

Through the years we've made some different and challenging realizations. From a sauna on skis to a floating restaurant on a lake. A cabin flying high in the sky by helicopter to be installed on a rooftop deck.





■ Perks of Ark

Personality — What we love most is to start from a white canvas and let all your needs and desires merge into the unique design of your dreams.

Adaptability — Ark's live, they adapt to your life! Want to move? It goes with you. Looking to expand? Let's add another module. The beauty of modular building.

Naturally ecological — Wood as natural insulation, self-sustainable technologies, low consumption appliances, and a production process that minimizes ecological impact.

Connected — Large windows let natural light flow in, connecting you with your surroundings. Making it the ideal home to relax after a stressful day.

Minimalism — The fewer the stimuli around you, the more your senses can be in focus. Enjoy our minimalist design.

Speed — Why wait for a house to be built or renovated? Our ateliers offer the fastest way to a finished home.

Live





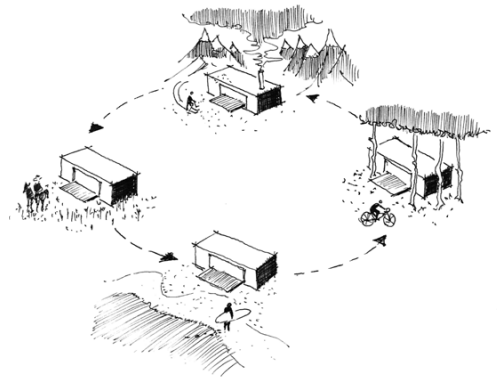
■ Ecologic

Water retention in the country — 30cm thick the green roof of substrate with a hydroaccumulation layer can catch impact rains, unlike ordinary sloping or flat roofs.

Multiplication of the country 's habitat area — the combination of a green roof with the installation of the object on pillars to levitate over the untouched landscape doubles the area of the landscape habitat.

Maintaining the natural climate of the forest environment — the green roof, wooden facades and ventilated soil under the building absorb heat during hot days, water during heavy rains and then gradually release into the environment, similar to the habitat of forests and meadows of the surrounding landscape.

Material fusion with the landscape — wooden facades made of vertical black slats merge with the trunks of the tree line surrounding the forest. Close contact with the forest evokes the atmosphere when the treetops above the buildings are formed by imaginary saddle roofs, this phenomenon is also manifested when viewed from the interior through the glazed parts of the roofs when the treetops are formed by exposed structures of vaults and trusses.



■ Prefabricated

Minimization of tree felling — due to the fact that the modules are finally manufactured in the factory, they can be planted as cells exactly between the tree trunks on pre-prepared ground screws, so there is no risk of breaking the root systems or trunks and the buildings come into closer contact with the forest.

Minimization of construction traffic and waste

— the finished modules are mounted on the ground screws by means of a crane within one day, which, even with the preparation of the ground screws, reduces the construction process with one week. In contrast to standard masonry construction, which lasts X months and, in addition to noise, also leaves construction waste after concreting or waste from individual building materials, our method of construction is far more liberating for the surrounding landscape.

Local materials and economy — cabins are a Slovak product made from ecological materials in order to support the Slovak economy.



□ S-helters

Single Cabins

wide

3 m 3,5 m 4 m 4,5 m

maximum length

13,5 m

Lodge

wide

3 m 3,5 m 4 m 4,5 m

maximum length

13,5 m

▣ M-odular

Combination of multiple cabins together

■ Ideal for

Houses

Holiday Homes

Rental projects

Lodges

Live





□ S-shelters

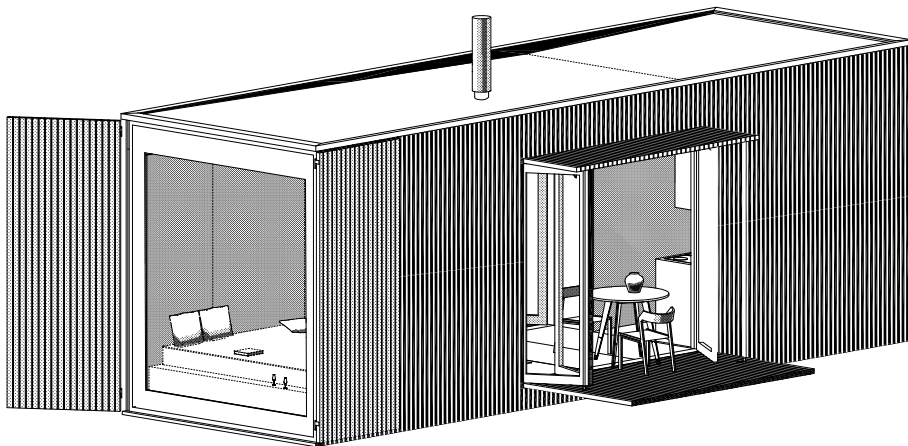
Cabin S

wide

maximum length

3 m

9,2 m



Our Shelter S module is all about living simply, beautifully and yet still with everything you need. It's about having the economic freedom to live a bigger life, instead of having a bigger house. They contain a living area, sleeping room, kitchen and bathroom and the complete structure is

constructed out of sustainable wood. It is possible to build these homes to be entirely self-contained and off-grid, generating and storing their own water and electricity. Characteristic of these outbuildings are the large windows that ensure maximum outdoor experience and optimum light intensity.

Endless possibilities — Our unique design has no fixed foundations, which gives you the advantage to have your ark wherever you can imagine! Whether you see yourself watching the moon's rays reflect on the lake, camping in a large grass field surrounded with wild horses,

waking up to the sound of animals in the woods, enjoying your morning coffee in a peaceful atmosphere; Ark-shelter makes it possible. Our mobility offers you the opportunity to bring you closer to nature.





Furniture — Ark provides a total experience. All furniture for the kitchen, bathroom and living area are included and were uniquely designed by Ark for your shelter.

The double bed can easily transform into a cosy couch facing the fireplace or the frameless window.





□ S-shelters

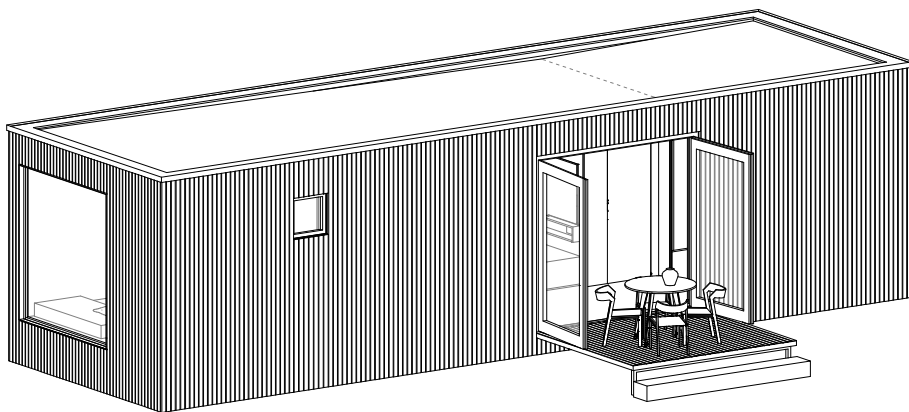
Lodge

wide

3,5 m 4 m 4,5 m

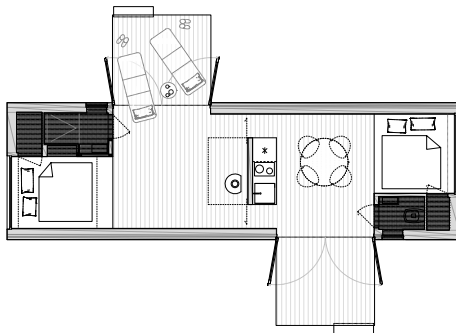
maximum length

13,5 m



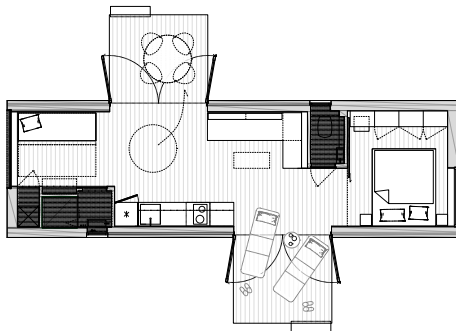
The lodges of Ark-Shelter are made for families, a group of friends or just a bigger living space. Two separated bedrooms are installed with one at a side with a big window to have enough natural incoming light. The large living space, and big windows create an all-inclusive living environment. Another major fact is that there are convertible spaces such as

a trundle bed that offers you the ability for two more people to stay in the lodge. The two big terraces one on each side let you enjoy the nature to the fullest.



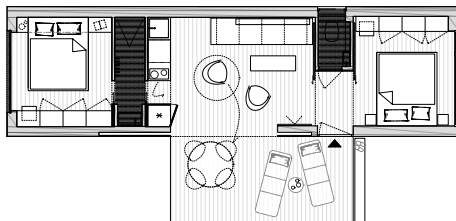
Loft

3,5 x 11,5 m



Camp

3,5 x 11,5 m



Family

3,5 x 12 m





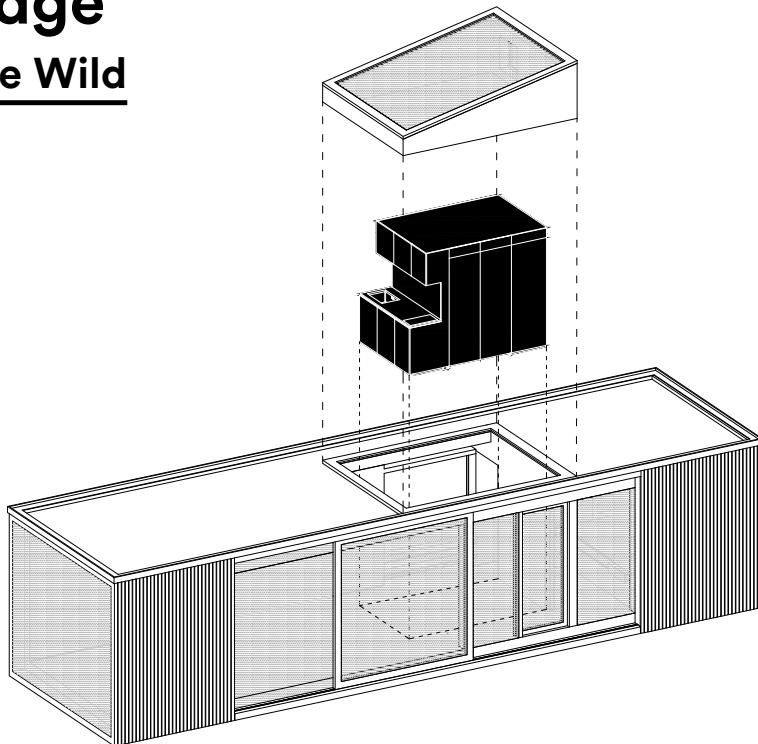
■ Lodge

In to the Wild

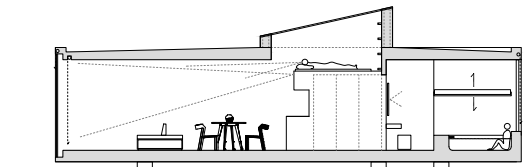
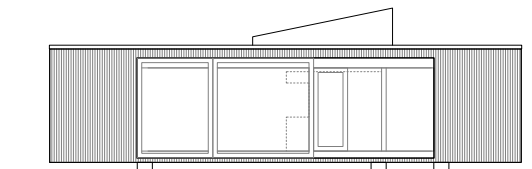
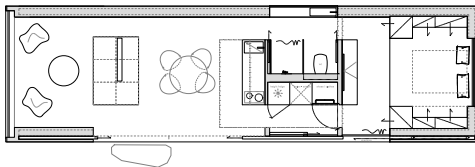
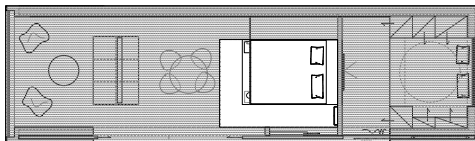
wide

length

3,5 m
12,5 m



Nowadays we live in a world where we are extremely busy and from time to time we need to escape from it. Escape from the stress, duties and civilizations back to our roots where it all started.



In to the Wild

The past 3 years we have been working on re-designing, building and testing different types of Ark-Shelter. We want to create a place that gives you comfort in the heart of the nature and gives you the perfect setting for a detox of your mind. From this perspective we created a new Shelter type: “into the wild cabin”. With its 5 openings all around we wanted to create a visual focus of the nature all around. Each opening brings in another atmosphere of the nature. The big openable wall and the big front glazing makes you feel like you’re sitting outside. The milk glass window in the bathroom gives you the all the natural light. We’ve made an extra module which is set on the roof and has a big window so you can sleep under a sky full of stars. This Ark is designed to merge perfectly with nature.



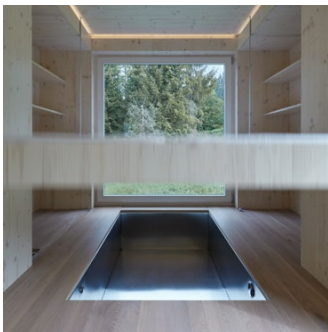


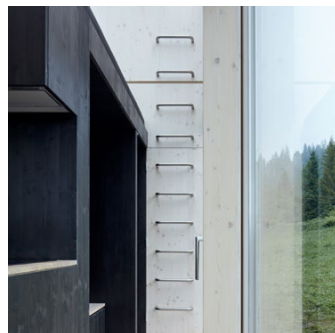
In to the Wild

Through our intelligent automatisaton the heating, cooling and shadings can be pre-programmed. The double-bed lifts automatically and beneath the bed there is a hidden jacuzzi, this creates a new relaxing area. The Shelter can work completely off-grid through solar panels, batteries and rain water collector. The 40m² has a central black box in the middle that creates 5 different areas, every single side is a particular area in the Shelter. lifts automatically.









田 M-odular





田 M-modular

A B C cabins language by Ark-Shelter

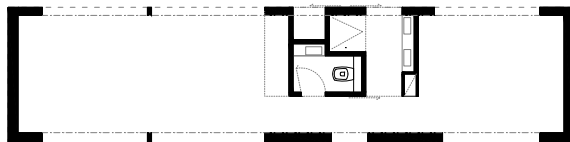
Modularity is where the fun begins. This building process allows you to play around with volumes and create buildings that can grow or shrink based on the evolving needs of your family. We created some base modules that can be combined endlessly, creating the ideal space you are dreaming of.



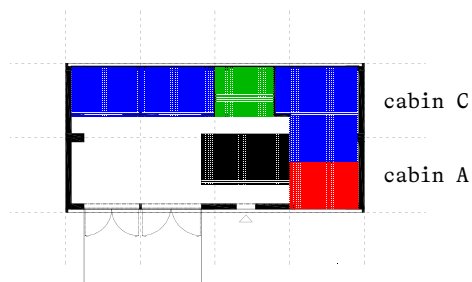
module C
42 m²



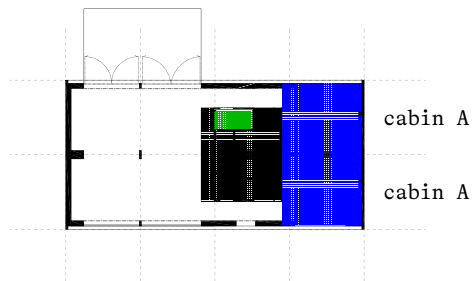
module B
42 m²



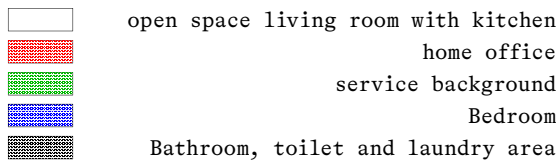
module A
42 m²

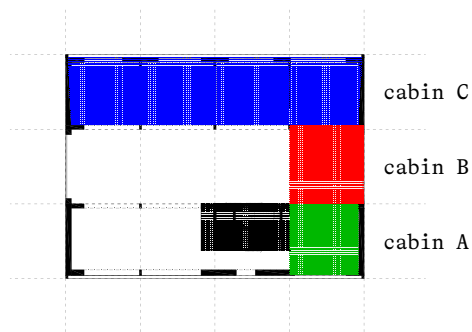


A C cabin house 98 m²

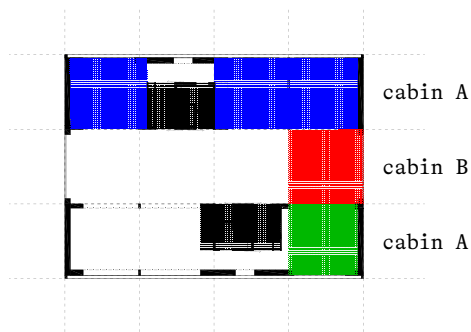


A A cabin house 98 m²

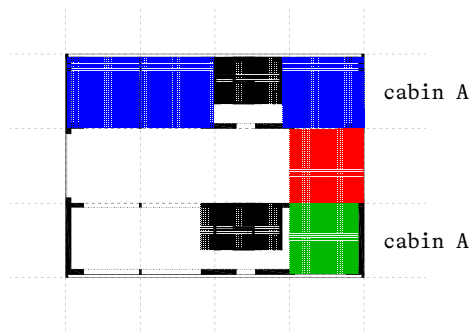




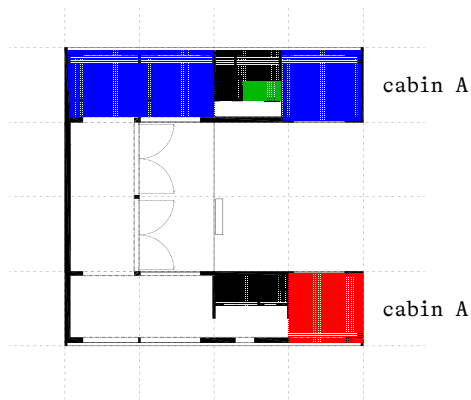
A B C cabin house 147 m²
A alternative



A B A cabin house 147 m²
B alternative



A B C cabin house 147 m²
B alternative



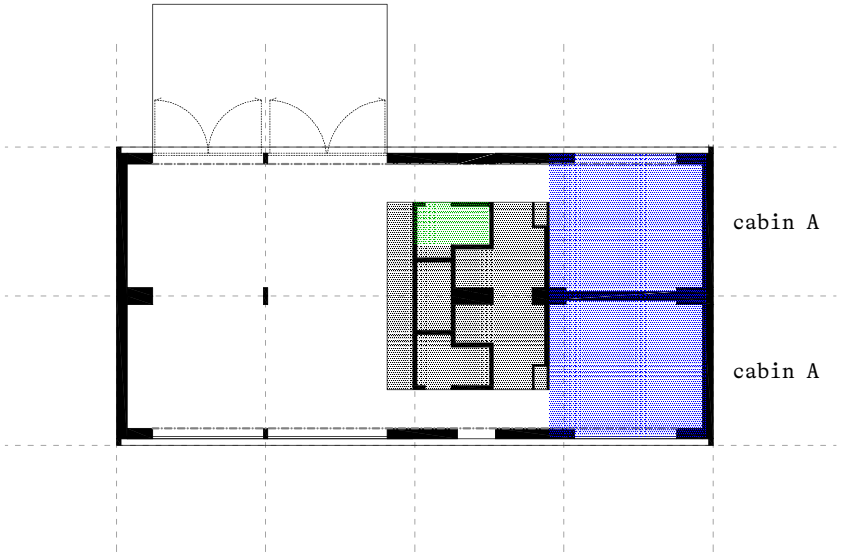
A B C cabin house 120 m²
alternative



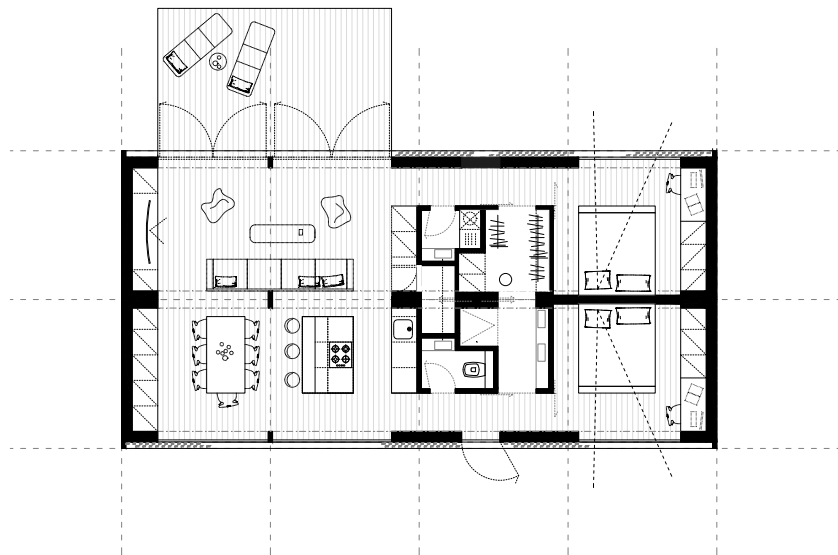
田 M-odular

A B C Modular Houses

A A / 84 m² / Comfort



open space livingroom with kitchen	48 m ²
bedroom	2x 12 m ²
bathroom	4,5 m ²
toilet	1,9 m ²
cellar	1,8 m ²

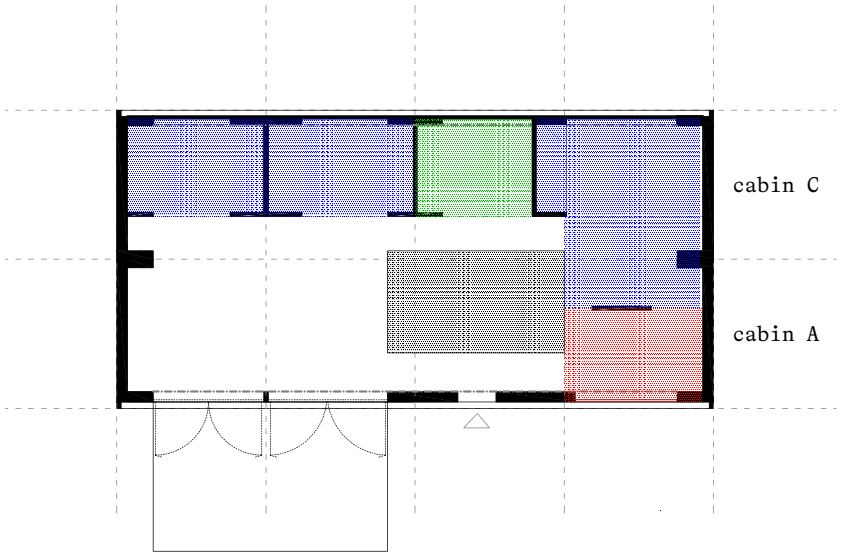


laundry room	1,8 m ²
dressing room	3,7 m ²
coridors	5 m ²
together	90,7 m ²
+ terrace	20 m ²

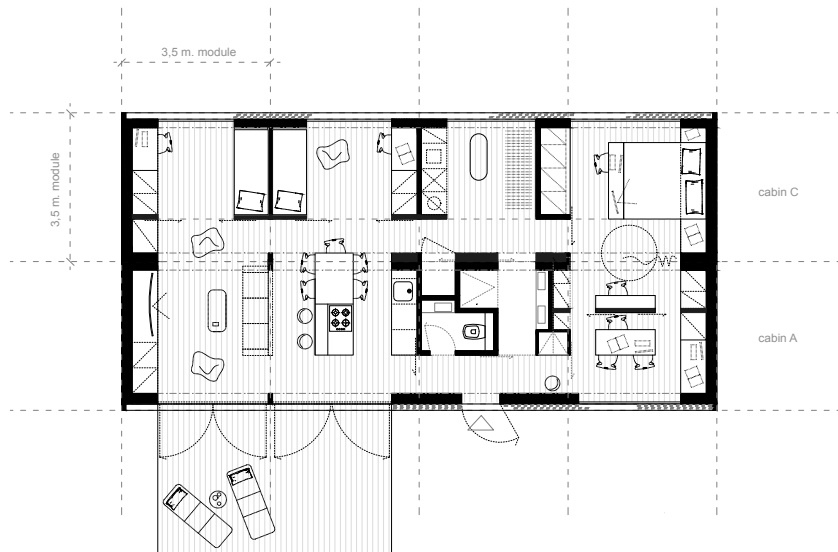
田 M-odular

A B C Modular Houses

C A / 98 m² / Effective



open space livingroom with kitchen	30,5 m ²
2 children rooms	2 x 8,5 m ²
bedroom with dressing room	17 m ²
bathroom	4,5 m ²
toilet	1,9 m ²
cellar	0,8 m ²

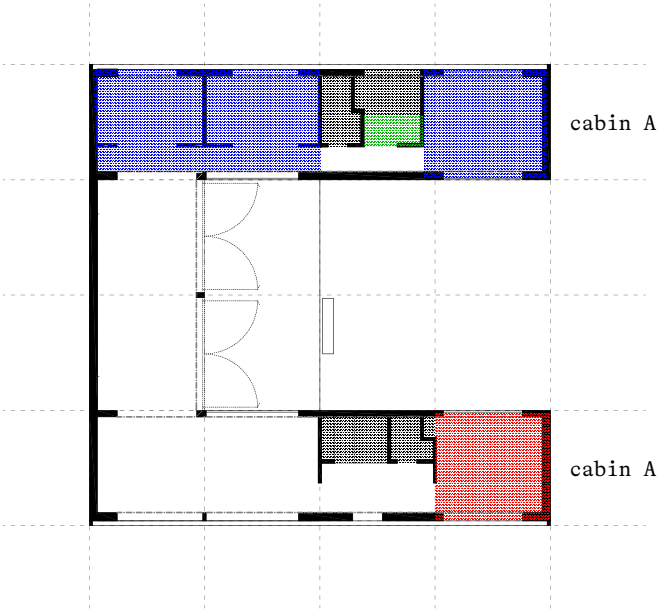


laundry room	6,3 m ²
home office	7,6 m ²
coridors	5,4 m ²
together	91 m ²
+ terrace	20 m ²

田 M-modular

A B C Modular Houses

A * A / 120 m² / U-Shape



open space livingroom with kitchen	43,5 m ²
2 children rooms	2 x 12 m ²
bedroom	12 m ²
bathroom	5 m ²
toilet	2 x 1,8 m ²
cellar	1,5 m ²

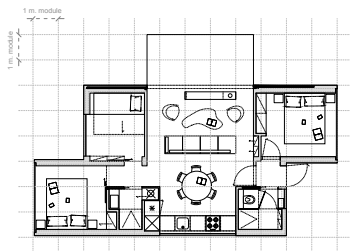


laundry room	1,5 m ²
home office	12 m ²
coridors	6 m ²
together	109 m ²
+ terrace	24 m ²



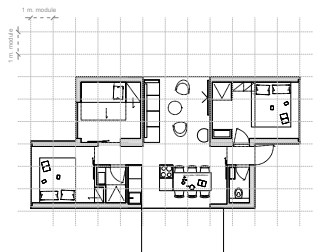


■ 60m² house designs



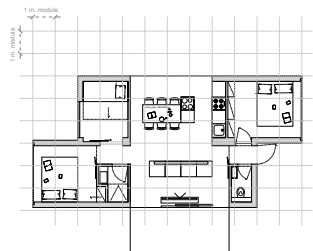
A version 60m²

open space living room with kitchen	1x
bedrooms	3x
bathrooms	2x
separated toilet	1x
closed entrance corridor	1x



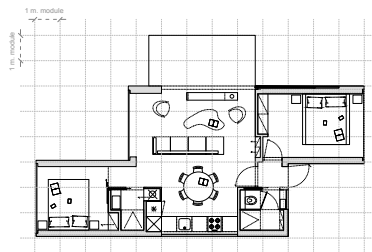
C version 60m²

open space living room with kitchen	1x
bedrooms	3x
bathrooms	2x
separated toilet	1x
closed entrance corridor	1x



B version 60m²

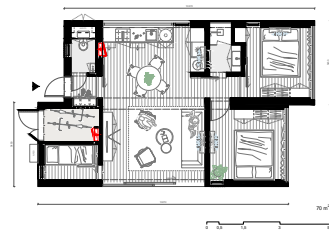
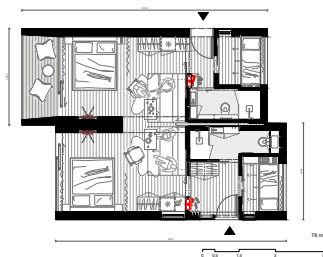
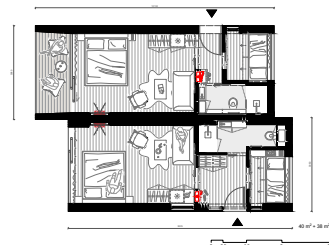
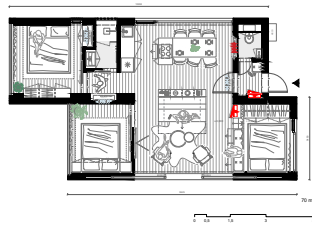
open space living room with kitchen	1x
bedrooms	3x
bathrooms	1x
separated toilet	1x
closed entrance corridor	1x



D version 60m²

open space living room with kitchen	1x
bedrooms	2x
bathrooms	2x
separated toilet	1x
closed entrance corridor	1x

Recent Projects



■ Custom examples





■ Custom examples





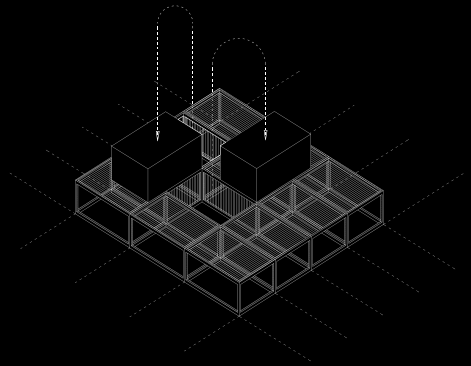
■ The way we work

We find out your needs, design multiple variations with 3D renders and we present you the project with a full budget.



01

Let's get to know each other — We are interested in hearing about your project and ideas! Explain your imagination to us, and we will show how our modular building system can help to realize your vision.



02

Let's go designing — We start drawing, in close dialogue with you. We take your ideas and turn these into a plan with renders and detailed drawings. Once satisfactory we will calculate the detailed building budget. Due to our controlled and streamlined production process the budget is in tighter control than through regular building.



03

Let's build and place — Once we start manufacturing your vision, our dialogue will rapidly accelerate. You can see your dream growing. Once it's ready, we deliver it and install it at your desired location.



04

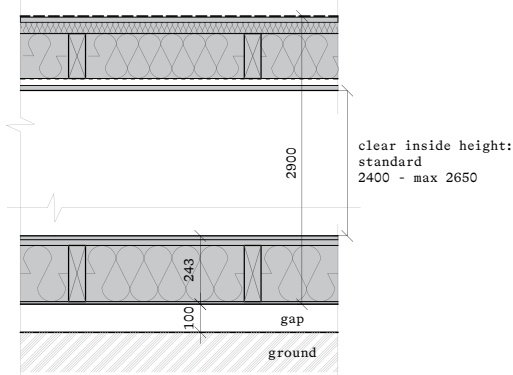
Change your projects — Whenever you feel the necessity of change or any evolution; contact us and we will show you several options on how your building can easily transform.

☒ Composition of cabin structures

Roof & Floor

Basic

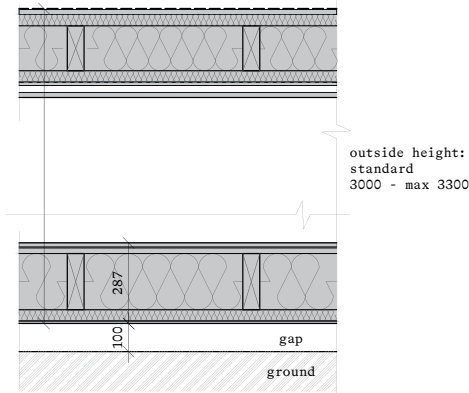
- hydroinsulation TPO foil / flagon/
- OSB board / 18 mm / hydroponic OSB
- levelling framing + thermal insulation, mineral rockwool boards in the slope 20-100 mm
- construction timber / height 160 mm / + thermal insulation, mineral rockwool boards / rockmin plus 160 mm /
- double tape Rothoblaas Double Band
- reflective foil delta Rothoblaas BARRIER ALU NET SD150 or DÖRKEN
- sealing tape Rothoblaas Nail plaster Gemini
- timber framing / 25 mm / for instalation wiring
- bioplate - wooden cladding / 18 mm /



- OAK floor / 14 mm / or VINYL floor / 6,5 mm /
- OSB board / 22 mm /
- construction timber / height 200 mm / + thermal insulation, mineral rockwool boards / 200 mm /
- watherproof plywood board / 9 mm /

Plus

- hydroinsulation TPO foil / flagon/
- OSB board / 18 mm / hydroponic OSB
- levelling framing + thermal insulation, mineral rockwool boards in the slope 20-100 mm
- construction timber / height 160 mm / + thermal insulation, mineral rockwool boards / rockmin plus 160 mm /
- double tape Rothoblaas Double Band
- reflective foil delta Rothoblaas BARRIER ALU NET SD150 or DÖRKEN
- sealing tape Rothoblaas Nail plaster Gemini
- timber framing / 25 mm / for instalation wiring
- bioplate - wooden cladding / 18 mm /

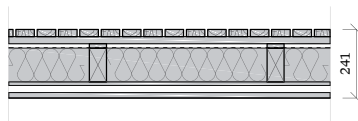


- OAK floor / 14 mm / or VINYL floor / 6,5 mm /
- OSB board / 22 mm /
- construction timber / height 200 mm / + thermal insulation, mineral rockwool boards / 200 mm /
- extra thermal insulation, mineral rockwool boards / 40 mm /
- watherproof plywood board / 9 mm /

Wall

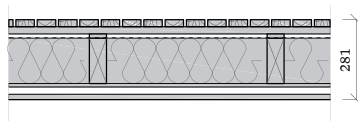
Basic

- thermowood or impregnated spruce facade / 25 mm / - slats 60 x 25 mm
- cross netting / impregnated spruce 25 mm / - battens 60 x 25 mm
- vertical netting / impregnated spruce 15 mm / - battens 60 x 15 mm
- black facade foil / DÖRKEN - DELTA®-FASSADE PLUS, diffuse / or Rothoblaas
- construction timber / 120 x 60 mm / + thermal insulation, mineral rockwool boards / rockmin, 120 mm /
- OSB / 12 mm / glued and taped to make a moisture membrane
- timber framing / 25 mm / - battens 60 x 25 mm
- bioplate - wooden cladding / 18 mm /



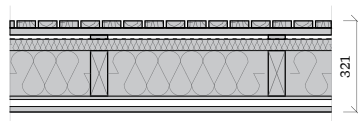
Standard

- thermowood or impregnated spruce facade / 25 mm / - slats 60 x 25 mm
- cross netting / impregnated spruce 25 mm / - battens 60 x 25 mm
- vertical netting / impregnated spruce 15 mm / - battens 60 x 15 mm
- black facade foil / DÖRKEN - DELTA®-FASSADE PLUS, diffuse / or Rothoblaas
- construction timber / 160 x 60 mm / + thermal insulation, mineral rockwool boards / rockmin, 160 mm /
- OSB / 12 mm / glued and taped to make a moisture membrane
- timber framing / 25 mm / - battens 60 x 25 mm
- bioplate - wooden cladding / 18 mm /



Plus

- thermowood or impregnated spruce facade / 25 mm / - slats 60 x 25 mm
- cross netting / impregnated spruce 25 mm / - battens 60 x 25 mm
- vertical netting / impregnated spruce 15 mm / - battens 60 x 15 mm
- black facade foil / DÖRKEN - DELTA®-FASSADE PLUS, diffuse / or Rothoblaas
- extra thermal insulation, mineral rockwool boards / 40 mm / in horizontal direction
- construction timber / 160 x 60 mm / + thermal insulation, mineral rockwool boards / rockmin, 160 mm /
- OSB / 12 mm / glued and taped to make a moisture membrane
- timber framing / 25 mm / - battens 60 x 25 mm
- bioplate - wooden cladding / 18 mm /



* fireproof regulations are individual case by each country

FAQ

What can you expect?

Ark-Shelter's obligations are to make our products available to the user for the duration of the agreement; or to deliver upon sale. It is transported and installed by Ark-Shelter, and also removed again if necessary. This kind of residential solution has no lasting impact for the place where it is located. Ark-Shelter can provide further adaptation of access to the unit, e.g. by means of a ramp. The provision of necessary piping and connections is done by a subcontractor on Ark-Shelter's instructions and is carried out in consultation with the owner.

How long do I have to wait?

Depending on production pressure, we can deliver and install the unit within 3 months. Installation usually takes no longer than 6 hours per unit. While the permit is being applied for, production is started. The foundation screws are placed just before arrival of the unit.

Where can the unit be placed?

The unit can be placed anywhere provided that the roads to this location are accessible for a trailer and that the crane on site has no obstacles in the turning radius!

Which foundation is used?

The unit is placed on unpaved ground on a screw foundation; the number is determined by the size of the unit. Prefabricated concrete blocks are also an option.

How is the installation done?

An Ark arrives on a truck and is then placed in its proper place by crane.

Can the Shelter be easily removed again?

An Ark stands about 5-10 cm off the ground (insulation reasons) and is not attached to the foundation. This means that the unit can be very easily picked up and moved again.

Where are the Arks built?

Arks are built in Slovakia and then transported to their destination.

How much is the transportation cost?

The transportation cost depends on the size, but especially the width of the Ark.

How is an Ark built?

The structure of the Ark is a modular wooden frame construction. This means that single units are possible, as well as larger structures by several units linked together or stacked on top of each other.

Is the construction process sustainable?

We work with Slovak indigenous wood species; an important local resource. Our suppliers must all have the FSC label, which guarantees us an environmentally responsible approach. In addition, an Ark can be recycled up to 95% when dismantled. Furthermore, thanks to excellent insulation and ventilation, we have very low energy consumption. The combination of these factors, along with a minimal waste production process and energy-efficient appliances, ensures that our carbon footprint with this way of building and living is very limited.

How big can an Ark be?

The width is 3m, 3.5m or 4m and the length can be between 6m and 14m. By linking or stacking several units (up to 5 high) you can create larger spaces.

Can an Ark work without utilities?

The initial idea of Ark Shelter was to create a home that could function off the grid. However, for reasons of required comfort, they are usually hooked up. We have experience in installing solar panels, batteries and rainwater recovery tanks.

Is there any work to be done on site?

An Ark is fully assembled with all components. The only things that will be installed on site are a possible terrace and/or fireplace.

How will the Ark be connected to water and electricity?

A simple electricity cable can be connected to the Ark. Water supply and drainage is done by connecting to the existing sewage system; if there is no sewage system, a septic tank can be used.

What type of heating is used?

Heating is provided by default via infrared panels because of their low consumption and high efficiency. For custom applications, a fireplace can also be provided. For large projects, we rely on alternative forms of heating. We prefer to work with air-to-air heat pumps because they can also cool in the warmer summer months and thus always guarantee an optimal indoor climate.

What are the costs associated with a unit?

Initially, you have the rental price or the sales price, this is a one-time cost plus the installation cost (crane, foundation, delivery, utilities, crew etc.).

What is included in the price?

The unit arrives fully assembled on a transport; which ensures quick installation. This unit is equipped with all appliances for heating, refrigerator, combination oven, stove, etc. This is something that some other providers do not include.

What procedures should be followed?

If you are interested in an Ark-Shelter; we will gladly send you an overview of the possibilities. Afterwards, we take care of a quick delivery and placement of the unit as well as coordination of the necessary connections. Furthermore, we also take care of the necessary permits, as the conditions vary from one municipality to another. If the unit needs to be moved, Ark-Shelter will pick it up, including the foundation screws, without any permanent or visible damage. *Warranty is void if a party not appointed by Ark-Shelter moves the unit.

What service do we offer?

Ark-Shelter's residential solutions have a very long service life. We have a team ready at all times to carry out any repairs and with a non-binding annual inspection of all essential points, we guarantee smooth operation of the unit and its accessories.

Where do you deliver?

Arks can be placed anywhere, but at present we supply and place our modular timber frame units only in Europe.

■ Interested?

Find your place, point your finger where you want it.

call

+32 472 784 510

write

info@ark-shelter.com



BIG SEE
Wood Design
Award 2023
Winner



BIGSEE
ARCHITECTURE
AWARD 2022
WINNER

BIGSEE
WOODDESIGN
AWARD 2022
WINNER



reddot winner 2020



BIGSEE
ARCHITECTURE
AWARD 2019
WINNER

